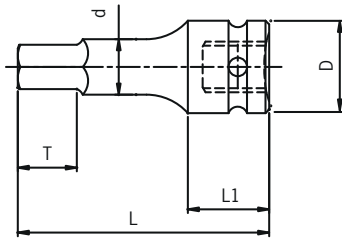
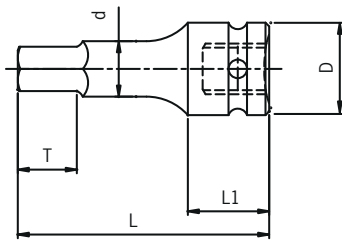


1/2" DR. HEX SAE



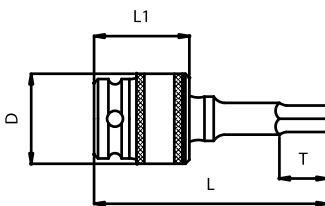
ITEM	SIZE	D	D	T	L1	L
26481	1/4"	8.5	25	11.5	22.5	68
26482	5/16"	10.5	25	12	22.5	68
26483	3/8"	12.2	25	12.5	22.5	68
26484	7/16"	13.9	25	13	22.5	68
26485	1/2"	15.8	25	13	22.5	68
26486	9/16"	17.6	25	14	22.5	68
26487	5/8"	19.8	25	15	22.5	68
26488	11/16"	21.5	25	15.5	22.5	68
26489	3/4"	23	25	16	22.5	68
264810	13/16"	23.5	25	17	22.5	68

1/2" DR. HEX METRIC



ITEM	SIZE	D	D	T	L1	L
26491	6mm	8	25	13	22.5	68
26492	7mm	9	25	13.5	22.5	68
26493	8mm	10.5	25	14	22.5	68
26494	9mm	11.5	25	14.5	22.5	68
26495	10mm	12.5	25	15	22.5	68
26496	12mm	15	25	15.5	22.5	68
26497	14mm	17.5	25	16	22.5	68
264912	15mm	19	25	16.5	22.5	68
26498	16mm	20	25	17	22.5	68
26499	17mm	21	25	17	22.5	68
264913	18mm	22	25	18	22.5	68
264910	19mm	23	25	18	22.5	68
264911	21mm	23.82	25	19	22.5	68

1/2" DR. UNIVERSAL HEX SAE



ITEM	SIZE	D	T	L1	L
274806	1/4"	30	13.5	36	76
274808	5/16"	30	20.5	36	76
274810	3/8"	30	20.5	36	76
274812	7/16"	30	20.5	36	76
274814	1/2"	30	20.5	36	76
274816	9/16"	30	20.5	36	76
274818	5/8"	30	20.5	36	76
274820	3/4"	30	20.5	36	76