



## 1/2" DRIVE SAE MASTER IMPACT SOCKET SET

2568 SET OF 43

MODEL	SIZE	MODEL	SIZE
212	3/8"	212	3/8" (DEEP)
214	7/16"	214	7/16" (DEEP)
216	1/2"	216	1/2" (DEEP)
218	9/16"	218	9/16" (DEEP)
220	5/8"	220	5/8" (DEEP)
222	11/16"	222	11/16" (DEEP)
224	3/4"	224	3/4" (DEEP)
226	13/16"	226	13/16" (DEEP)
228	7/8"	228	7/8" (DEEP)
230	15/16"	230	15/16" (DEEP)
232	1"	232	1" (DEEP)
234	1-1/16"	234	1-1/16" (DEEP)
236	1-1/8"	236	1-1/8" (DEEP)
238	1-3/16"	238	1-3/16" (DEEP)
240	1-1/4"	240	1-1/4" (DEEP)
242	1-5/16"	242	1-5/16" (DEEP)
244	1-3/8"	244	1-3/8" (DEEP)
246	1-7/16"	246	1-7/16" (DEEP)
248	1-1/2"	248	1-1/2" (DEEP)

Includes: 4 Impact Extension Bars - 3" (2503), 5" (2505), 10" (2510), 15" (2515), Universal Joint (2300)



## 1/2" DRIVE METRIC MASTER IMPACT SOCKET SET

2569 SET OF 43

MODEL	SIZE	MODEL	SIZE
212M	9mm	212MD	9mm (DEEP)
210M	10mm	210MD	10mm (DEEP)
211M	11mm	211MD	11mm (DEEP)
212M	12mm	212MD	12mm (DEEP)
213M	13mm	213MD	13mm (DEEP)
214M	14mm	214MD	14mm (DEEP)
215M	15mm	215MD	15mm (DEEP)
216M	16mm	216MD	16mm (DEEP)
217M	17mm	217MD	17mm (DEEP)
218M	18mm	218MD	18mm (DEEP)
219M	19mm	219MD	19mm (DEEP)
220M	20mm	220MD	20mm (DEEP)
221M	21mm	221MD	21mm (DEEP)
222M	22mm	222MD	22mm (DEEP)
223M	23mm	223MD	23mm (DEEP)
224M	24mm	224MD	24mm (DEEP)
226M	26mm	226MD	26mm (DEEP)
227M	27mm	227MD	27mm (DEEP)
230M	30mm	230MD	30mm (DEEP)

Includes: 4 Impact Extension Bars - 3" (2503), 5" (2505), 10" (2510), 15" (2515), Universal Joint (2300)

1/2" DR.



## 1/2" DRIVE SAE DEEP IMPACT SOCKET SET

- Expanded size range includes deep impact sockets from 5/16 - 1-1/2"

2824 SET OF 24

MODEL	SIZE	MODEL	SIZE
210	5/16"	230	15/16"
212	3/8"	232	1"
214	7/16"	234	1-1/16"
216	1/2"	236	1-1/8"
218	9/16"	238	1-3/16"
220	5/8"	240	1-1/4"
222	11/16"	242	1-5/16"
224	3/4"	244	1-3/8"
226	13/16"	246	1-7/16"
228	7/8"	248	1-1/2"

Includes: 3 Impact Extension Bars: 3" (2503), 5" (2505), 10" (2510), Universal Joint (2300)



## 1/2" DRIVE SAE & METRIC MASTER DOUBLE DEEP IMPACT SOCKET SET

5153DD SET OF 29

MODEL	SIZE	MODEL	SIZE
214D	7/16"	228D	7/8"
216D	1/2"	230D	15/16"
218D	9/16"	232D	1"
220D	5/8"	234D	1-1/16"
222D	11/16"	236D	1-1/8"
224D	3/4"	240D	1-1/4"
226D	13/16"		

MODEL	SIZE	MODEL	SIZE
210MD	10mm	217MD	17mm
211MD	11mm	218MD	18mm
212MD	12mm	219MD	19mm
213MD	13mm	221MD	21mm
214MD	14mm	222MD	22mm
215MD	15mm	226MD	26mm
216MD	16mm	227MD	27mm

### DEEP FLIP SOCKETS

MODEL	SIZE	MODEL	SIZE
2701	3/4" x 13/16"	2704	19mm x 21mm

1/2" DR.

1/2" DR.



## 1/2" DRIVE METRIC MASTER IMPACT SOCKET SET

2669 SET OF 39

MODEL	SIZE	MODEL	SIZE
209M	9mm	209MD	9mm (DEEP)
210M	10mm	210MD	10mm (DEEP)
211M	11mm	211MD	11mm (DEEP)
212M	12mm	212MD	12mm (DEEP)
213M	13mm	213MD	13mm (DEEP)
214M	14mm	214MD	14mm (DEEP)
215M	15mm	215MD	15mm (DEEP)
216M	16mm	216MD	16mm (DEEP)
217M	17mm	217MD	17mm (DEEP)
218M	18mm	218MD	18mm (DEEP)
219M	19mm	219MD	19mm (DEEP)
220M	20mm	220MD	20mm (DEEP)
221M	21mm	221MD	21mm (DEEP)
222M	22mm	222MD	22mm (DEEP)
223M	23mm	223MD	23mm (DEEP)
224M	24mm	224MD	24mm (DEEP)
226M	26mm	226MD	26mm (DEEP)
227M	27mm	227MD	27mm (DEEP)
230M	30mm	230MD	30mm (DEEP)

Includes: Universal Joint (2300)



## 1/2" DRIVE 12 POINT METRIC MASTER IMPACT SOCKET SET

2699 Set of 39

MODEL	SIZE	MODEL	SIZE
209ZM	9mm	209ZMD	9mm (DEEP)
210ZM	10mm	210ZMD	10mm (DEEP)
211ZM	11mm	211ZMD	11mm (DEEP)
212ZM	12mm	212ZMD	12mm (DEEP)
213ZM	13mm	213ZMD	13mm (DEEP)
214ZM	14mm	214ZMD	14mm (DEEP)
215ZM	15mm	215ZMD	15mm (DEEP)
216ZM	16mm	216ZMD	16mm (DEEP)
217ZM	17mm	217ZMD	17mm (DEEP)
218ZM	18mm	218ZMD	18mm (DEEP)
219ZM	19mm	219ZMD	19mm (DEEP)
220ZM	20mm	220ZMD	20mm (DEEP)
221ZM	21mm	221ZMD	21mm (DEEP)
222ZM	22mm	222ZMD	22mm (DEEP)
223ZM	23mm	223ZMD	23mm (DEEP)
224ZM	24mm	224ZMD	24mm (DEEP)
226ZM	26mm	226ZMD	26mm (DEEP)
227ZM	27mm	227ZMD	27mm (DEEP)
230ZM	30mm	230ZMD	30mm (DEEP)

Includes: Universal Joint (2300)



## 1/2" DRIVE METRIC DEEP IMPACT SOCKET SET

2646 SET OF 26

MODEL	SIZE	MODEL	SIZE
210MD	10mm	223MD	23mm
211MD	11mm	224MD	24mm
212MD	12mm	225MD	25mm
213MD	13mm	226MD	26mm
214MD	14mm	227MD	27mm
215MD	15mm	228MD	28mm
216MD	16mm	229MD	29mm
217MD	17mm	230MD	30mm
218MD	18mm	232MD	32mm
219MD	19mm	233MD	33mm
220MD	20mm	234MD	34mm
221MD	21mm	235MD	35mm
222MD	22mm	236MD	36mm



## 1/2" DRIVE 12 POINT METRIC DEEP IMPACT SOCKET SET

2827 SET OF 26

MODEL	SIZE	MODEL	SIZE
267210	10mm	267223	23mm
267211	11mm	267224	24mm
267212	12mm	225ZMD	25mm
267213	13mm	226ZMD	26mm
267214	14mm	227ZMD	27mm
267215	15mm	228ZMD	28mm
267216	16mm	229ZMD	29mm
267217	17mm	230ZMD	30mm
267218	18mm	232ZMD	32mm
267219	19mm	233ZMD	33mm
267220	20mm	234ZMD	34mm
267221	21mm	235ZMD	35mm
267222	22mm	236ZMD	36mm

1/2" DR.

## 1/2" DRIVE SAE IMPACT SOCKET SET

2640 SET OF 19

MODEL	SIZE	MODEL	SIZE
212	3/8"	232	1"
214	7/16"	234	1-1/16"
216	1/2"	236	1-1/8"
218	9/16"	238	1-3/16"
220	5/8"	240	1-1/4"
222	11/16"	242	1-5/16"
224	3/4"	244	1-3/8"
226	13/16"	246	1-7/16"
228	7/8"	248	1-1/2"
230	15/16"		



## 1/2" DRIVE METRIC DEEP IMPACT SOCKET SET

2653 SET OF 14

MODEL	SIZE	MODEL	SIZE
210MD	10mm	217MD	17mm
211MD	11mm	218MD	18mm
212MD	12mm	219MD	19mm
213MD	13mm	221MD	21mm
214MD	14mm	222MD	22mm
215MD	15mm	226MD	26mm
216MD	16mm	227MD	27mm



1/2" DR.

## 1/2" DRIVE 12 POINT METRIC DEEP IMPACT SOCKET SET

2672 SET OF 15

MODEL	SIZE	MODEL	SIZE
267210	10mm	267218	18mm
267211	11mm	267219	19mm
267212	12mm	267220	20mm
267213	13mm	267221	21mm
267214	14mm	267222	22mm
267215	15mm	267223	23mm
267216	16mm	267224	24mm
267217	17mm		

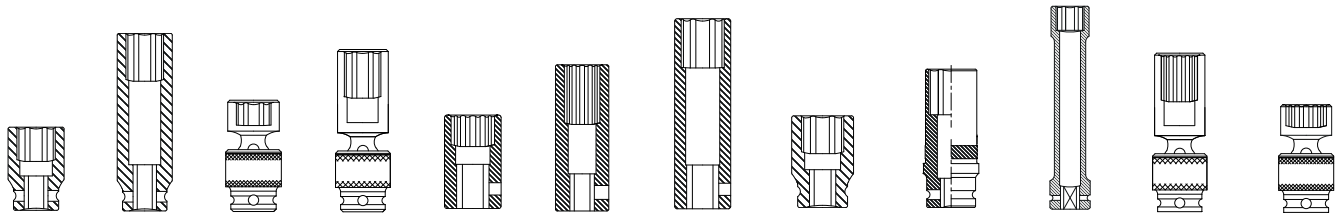


## 1/2" DRIVE METRIC EXTRA LONG DEEP IMPACT SOCKET SET

2852 SET OF 9

MODEL	SIZE	MODEL	SIZE
226MXD	26mm	231MXD	31mm
227MXD	27mm	232MXD	32mm
228MXD	28mm	233MXD	33mm
229MXD	29mm	234MXD	34mm
230MXD	30mm		





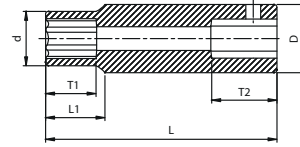
1/2" DR.

## 1/2" DRIVE INDIVIDUAL METRIC SOCKETS

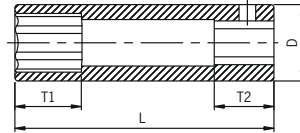
SIZE	STD.	DEEP	UNIV.	DEEP UNIV.	12 PT.	12 PT. DEEP	EXTRA THIN WALL DEEP	MAGNETIC	WHEEL PROTECT.	EXTRA LONG DEEP	12 PT. DEEP UNIV.	12 PT. UNIV.
METRIC	MODEL	MODEL	MODEL	MODEL	MODEL	MODEL	MODEL	MODEL	MODEL	MODEL	MODEL	MODEL
8mm	208M	208MD								208MXD		
9mm	209M	209MD			209ZM	209ZMD				209MXD		
10mm	210M	210MD	210UM	210UMD	210ZM	267210		210MMG		210MXD	210MZUD	210ZUM
11mm	211M	211MD	211UM	211UMD	211ZM	267211		211MMG		211MXD	211MZUD	211ZUM
12mm	212M	212MD	212UM	212UMD	212ZM	267212		212MMG		212MXD	212MZUD	212ZUM
13mm	213M	213MD	213UM	213UMD	213ZM	267213		213MMG		213MXD	213MZUD	213ZUM
14mm	214M	214MD	214UM	214UMD	214ZM	267214		214MMG		214MXD	214MZUD	214ZUM
15mm	215M	215MD	215UM	215UMD	215ZM	267215		215MMG	284915	215MXD	215MZUD	215ZUM
16mm	216M	216MD	216UM	216UMD	216ZM	267216		216MMG		216MXD	216MZUD	216ZUM
17mm	217M	217MD	217UM	217UMD	217ZM	267217	2617	217MMG	284917	217MXD	217MZUD	217ZUM
18mm	218M	218MD	218UM	218UMD	218ZM	267218		218MMG		218MXD	218MZUD	218ZUM
19mm	219M	219MD	219UM	219UMD	219ZM	267219	2619	219MMG	284919	219MXD	219MZUD	219ZUM
20mm	220M	220MD	220UM	220UMD	220ZM	267220		220MMG		220MXD	220MZUD	220ZUM
21mm	221M	221MD	221UM	221UMD	221ZM	267221	2621	221MMG	284921	221MXD	221MZUD	221ZUM
22mm	222M	222MD	222UM	222UMD	222ZM	267222	2622			222MXD	222MZUD	222ZUM
23mm	223M	223MD	223UM	223UMD	223ZM	267223	2623			223MXD	223MZUD	223ZUM
24mm	224M	224MD	224UM	224UMD	224ZM	267224				224MXD	224MZUD	224ZUM
25mm	225M	225MD			225ZM	225ZMD				225MXD		
26mm	226M	226MD			226ZM	226ZMD				226MXD		
27mm	227M	227MD			227ZM	227ZMD				227MXD		
28mm	228M	228MD			228ZM	228ZMD				228MXD		
29mm	229M	229MD			229ZM	229ZMD				229MXD		
30mm	230M	230MD			230ZM	230ZMD				230MXD		
31mm	231M	231MD			231ZM	231ZMD				231MXD		
32mm	232M	232MD			232ZM	232ZMD				232MXD		
33mm	233M	233MD			233ZM	233ZMD				233MXD		
34mm	234M	234MD			234ZM	234ZMD				234MXD		
35mm	235M	235MD			235ZM	235ZMD				235MXD		
36mm	236M	236MD			236ZM	236ZMD				236MXD		
37mm										237MXD		
38mm										238MXD		

## 1/2" DR. DEEP 6 POINT METRIC

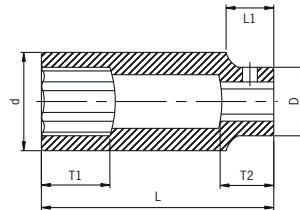
ITEM	SIZE	SHAPE	D	D	T1	T2	L1	L
208MD	8mm	A	14.5	22	14	18	17	78
209MD	9mm	A	15.6	22	14	18	17	78
210MD	10mm	A	16.7	22	14	18	17	78
211MD	11mm	A	18	22	14	18	17	78
212MD	12mm	A	19	22	14	18	17	78
213MD	13mm	A	20.2	24	14	18	17	78
214MD	14mm	A	21.5	24	17	18	17	78
215MD	15mm	B	/	24	17	18	/	78
216MD	16mm	B	/	25	17	18	/	78
217MD	17mm	B	/	26	17	18	/	78
218MD	18mm	B	/	26	17	18	/	78
219MD	19mm	B	/	28	17	18	/	78
220MD	20mm	B	/	30	19	18	/	78
221MD	21mm	B	/	30	24	18	/	78
222MD	22mm	B	/	32	24	18	/	78
223MD	23mm	B	/	32	24	18	/	78
224MD	24mm	B	/	34	24	18	/	78
225MD	25mm	B	/	36	36	18	/	78
226MD	26mm	B	/	36	24	18	/	78
227MD	27mm	B	/	38	24	18	/	78
228MD	28mm	B	/	38	24	18	/	78
230MD	30mm	C	42	38	24	18	15	78
231MD	31mm	C	44	38	24	18	15	78
232MD	32mm	C	44	38	24	18	15	78
233MD	33mm	C	44	38	24	18	15	78
234MD	34mm	C	45	38	34	18	15	78
236MD	36mm	C	50	38	34	18	15	78



A



B



C