

1/2" DR.

1/2"
DRIVE

1/2" DRIVE TORQUE LIMITING EXTENSION SET

- Made of flexible spring steel that stops turning when the required torque has been reached
- This set contains the most popular sizes and torque ratings needed in the automotive service industry; torque limiting extensions often extend the life of thin wall impact sockets by limiting the torque to the required rating

2450 SET OF 5

MODEL	SIZE
2465	65 ft. lbs. Extension / 90 Nm
2480	80 ft. lbs. Extension / 110 Nm
24100	100 ft. lbs. Extension / 135 Nm
24120	120 ft. lbs. Extension / 160 Nm
24140	140 ft. lbs. Extension / 190 Nm

1/2"
DRIVE

1/2" DRIVE SAE & METRIC MASTER IMPACT HEX DRIVER SET

2637 SET OF 20

MODEL	SIZE	MODEL	SIZE
26581	1/4"	26485	1/2"
264811	9/32"	26486	9/16"
26482	5/16"	26487	5/8"
26583	3/8"	26488	11/16"
26484	7/16"	26489	3/4"
MODEL	SIZE	MODEL	SIZE
26491	6mm	26497	14mm
26492	7mm	264912	15mm
26493	8mm	26499	17mm
26495	10mm	264913	18mm
26496	12mm	264910	19mm

1/2"
DRIVE

1/2" DRIVE 6" LONG IMPACT HEX DRIVER MASTER SET

2637L SET OF 20

MODEL	SIZE	MODEL	SIZE
26481L	1/4"	264811L	9/32"
26482L	5/16"	26483L	3/8"
26484L	7/16"	26485L	1/2"
26486L	9/16"	26487L	5/8"
26488L	11/16"	26489L	3/4"
MODEL	SIZE	MODEL	SIZE
26491L	6mm	26492L	7mm
26493L	8mm	26495L	10mm
26496L	12mm	26497L	14mm
264912L	15mm	26499L	17mm
264913L	18mm	264910L	19mm

1/2" DRIVE SAE IMPACT HEX DRIVER SET

• Includes popular SAE hex sizes used for automotive repair

2638 SET OF 10

MODEL	SIZE	MODEL	SIZE
26581	1/4"	26485	1/2"
264811	9/32"	26486	9/16"
26482	5/16"	26487	5/8"
26583	3/8"	26488	11/16"
26484	7/16"	26489	3/4"



1/2" DR.

1/2" DRIVE 6" LONG SAE IMPACT HEX DRIVER MASTER SET

2638L SET OF 10

MODEL	SIZE	MODEL	SIZE
26481L	1/4"	264811L	9/32"
26482L	5/16"	26483L	3/8"
26484L	7/16"	26485L	1/2"
26486L	9/16"	26487L	5/8"
26488L	11/16"	26489L	3/4"



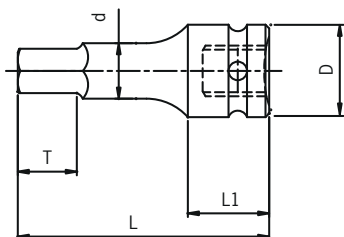
1/2" DRIVE METRIC IMPACT HEX DRIVER SET

2639 SET OF 10

MODEL	SIZE	MODEL	SIZE
26491	6mm	26497	14mm
26492	7mm	264912	15mm
26493	8mm	26499	17mm
26495	10mm	264913	18mm
26496	12mm	264910	19mm

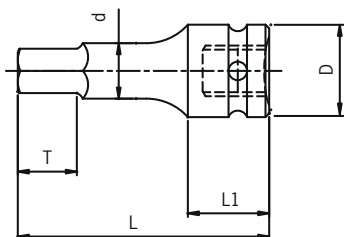


1/2" DR. HEX SAE



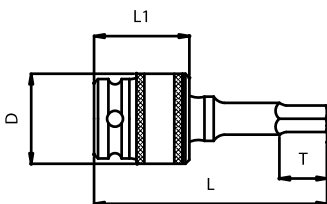
ITEM	SIZE	D	D	T	L1	L
26481	1/4"	8.5	25	11.5	22.5	68
26482	5/16"	10.5	25	12	22.5	68
26483	3/8"	12.2	25	12.5	22.5	68
26484	7/16"	13.9	25	13	22.5	68
26485	1/2"	15.8	25	13	22.5	68
26486	9/16"	17.6	25	14	22.5	68
26487	5/8"	19.8	25	15	22.5	68
26488	11/16"	21.5	25	15.5	22.5	68
26489	3/4"	23	25	16	22.5	68
264810	13/16"	23.5	25	17	22.5	68

1/2" DR. HEX METRIC



ITEM	SIZE	D	D	T	L1	L
26491	6mm	8	25	13	22.5	68
26492	7mm	9	25	13.5	22.5	68
26493	8mm	10.5	25	14	22.5	68
26494	9mm	11.5	25	14.5	22.5	68
26495	10mm	12.5	25	15	22.5	68
26496	12mm	15	25	15.5	22.5	68
26497	14mm	17.5	25	16	22.5	68
264912	15mm	19	25	16.5	22.5	68
26498	16mm	20	25	17	22.5	68
26499	17mm	21	25	17	22.5	68
264913	18mm	22	25	18	22.5	68
264910	19mm	23	25	18	22.5	68
264911	21mm	23.82	25	19	22.5	68

1/2" DR. UNIVERSAL HEX SAE



ITEM	SIZE	D	T	L1	L
274806	1/4"	30	13.5	36	76
274808	5/16"	30	20.5	36	76
274810	3/8"	30	20.5	36	76
274812	7/16"	30	20.5	36	76
274814	1/2"	30	20.5	36	76
274816	9/16"	30	20.5	36	76
274818	5/8"	30	20.5	36	76
274820	3/4"	30	20.5	36	76