



TO INFORM YOU PRODUCT SUPPORT BULLETIN # 524

TO: AUTHORIZED *portable electric tool* SERVICE STATIONS
factory SERVICE CENTERS

DATE: March, 2013

TOOL(S) \ PRODUCT(S) AFFECTED: 5195 Die Grinder, 5210, 5211, 5220, 5240, 5243, 5263 Straight Grinders, 5590, 5595 Polisher, 6020, 6032, 6036, 6060, 6024, 6052, 6054, 6056, 6058, 6064, 6065, 6066, 6082, 6084, 6086, 6088, 6095*, 6096*, 6098*, 6102, 6104, 6106, 6108, 6115 Sander/Grinders; 23-66-1802 Handle / Switch Service Kit

SUBJECT: **REPLACEMENT OPTION** for product originally using 23-66-0255 Switch and a one piece **Molded Strain Relief Cord** 22-64-0075, 22-64-0076 or 22-64-0080

23-66-0255 is obsolete and replaced by 14-46-1852 Service Instruction Notice –

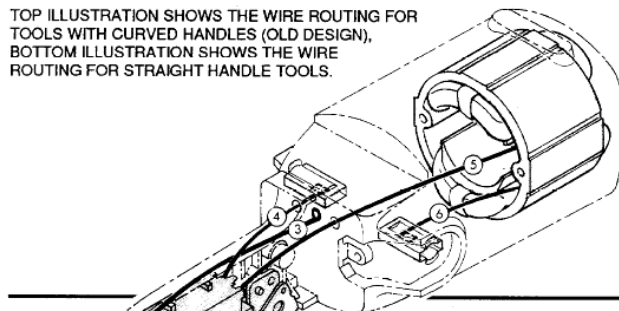
In above 'AFFECTED' product using a one piece Molded Strain Relief Cord 22-64-0075, 22-64-0076 or 22-64-0080, to use 23-66-1802 Handle / Switch Service Kit as a replacement for 23-66-0255 Switch – will require a 22-64-3000 Cordset & separate Strain Relief 44-76-0170 and in addition, *3ea - 06-82-2378 10-24X1 SLT PN MACH TORX HANDLE SCREWS* and *3ea 06-55-1050 10-24 HEX NUTS* – if the cordset on the tool is good, simply cut the molded strain relief off of the cord and establish new lead lengths, without having to purchase/use a 22-64-3000 cord; then using the 44-76-0170 strain relief properly secure the cord and strain relief into the handles supplied with the 23-66-1802 switch / handle kit – see Wiring Instructions 58-01-0371 – some rewiring as lead lengths can change, will need to be done.



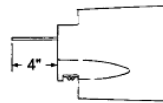
The 23-66-1852 Switch Replacement Kit is obsolete and replaced by one of three switch kits listed below. Determine the correct switch kit needed for your tool and please re-order.

Service Kit	For '50 Series' Grinders listed below
31-44-0210	5196, 5211, 5223, 5455, 5535, 6072 and 6075
Service Kit	For '70 Series' Grinders listed below
23-66-1802	6065-6, 6066-6, 6067-6, 6068-6, 6069, 6070, 6095, 6096, 6098, 5243 and 5243-2
Service Instruction	8" Panel Saw Motor 6410, 6411, 6465 and 6466
	PLEASE CALL MILWAUKEE AFTER-SALES SERVICE-TECHNICAL SUPPORT 1.800.729.3878 FOR CURRENT OPTIONS

TOP ILLUSTRATION SHOWS THE WIRE ROUTING FOR TOOLS WITH CURVED HANDLES (OLD DESIGN), BOTTOM ILLUSTRATION SHOWS THE WIRE ROUTING FOR STRAIGHT HANDLE TOOLS.

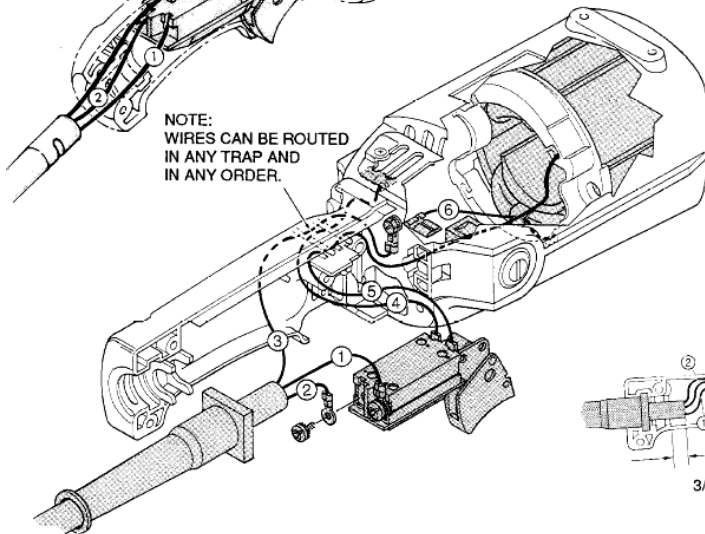


NOTE:
AFTER FIELD IS INSTALLED,
CUT WIRE NO. 5 TO 4" FROM
REAR OF MOTOR HOUSING.



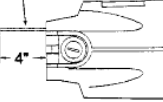
CURVED DESIGN

STRAIGHT DESIGN

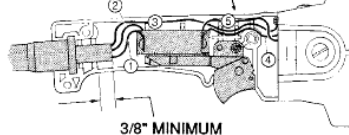


NOTE:
WIRES CAN BE ROUTED
IN ANY TRAP AND
IN ANY ORDER.

NOTE:
AFTER FIELD IS INSTALLED,
CUT WIRE NO. 5 TO 4" FROM
REAR OF MOTOR HOUSING.



NOTE:
WIRES CAN BE ROUTED IN
ANY TRAP AND IN ANY
ORDER.



*Note: 6095, 6096 and 6098 use a Power & Control Module – Power & Control Modules can be removed and tool wired to 58-01-0371 Wiring Instruction – some rewiring will be need to be done, with the connector blocks/modules discarded.

54-38-0100, -0101, -0120, -0121, -0140, -0141, -0160, -0161, -0180, -0181, -0200, -0201, -0210, -0220, -0221, -0330, -0340, -0350, -0370, -0380, -1350, -1351, -2020, -2500, -2501, -2502, -2525, -2526, -3112, -3250, -3275, -3300, -3350, -3375