

VIKING

AIR TOOLS

ABRASIVE FINISHING

Viking's earned reputation and position of continued leadership in the development of abrasive finishing tools allows us to offer a complete line of sanders & polishers that deliver unsurpassed power & performance, resulting in the perfect finish. Lightweight designs ensure they are comfortable and easy to operate.

Straight Line Sanders Removes Material Quickly / Smooth Operation / Ideal for Surface Preparation of Fiberglass, Sheet Metal, Steel, Body Putty or Wood / 1/4 NPT Air Inlet / 3/8" Min. Hose Size



V100 Dual Piston Straight Line Sander



V101 Single Piston Straight Line Sander

Model	SPM	CFM	Noise	Required Pressure	Adapter	Vibration	Weight	Type of Pad Supplied	Warranty
V100	2,400	4	91	90-100 PSI	1/4"	<2.5 M/S2	7-3/4"	2-3/4" x 16" Klip-on	2 yr.
V101	2,400	4	89	90-100 PSI	1/4"	<2.5 M/S2	6-1/2"	2-3/4" x 11" P.S.A.	2 yr.

Belt Sanders Rear Exhaust Directs Air Away From Work Surface / Silencer Reduces Noise / Precision Air Motor With Exceptionally High Turning Force / Precision Ball Bearings For Longer Life / Built-In Speed Regulator / 360° Head Rotation / 1/4 NPT Air Inlet / 3/8" Min. Hose Size / 1 Year Warranty



VT4500 1/4" Belt Sander



VT4505 1" Belt Sander

Model	RPM	CFM	HP	Belt Size	Noise	Max. Pressure	Vibration	Length	Weight
VT4500	16,000	14.2	.37	1/4" x 13"	80 dB	85 PSI	3.8 M/S2	10-7/16"	2 Lbs.
VT4501	16,000	8	0.31	3/8" x 13"	89 dB	90 PSI	3.8 M/S2	11.4"	1.75 Lbs.
VT4503	16,000	9	0.42	3/4" x 20-1/2"	89 dB	90 PSI	3.1 M/S2	14.1"	2.6 Lbs.
VT4504	16,000	9	0.42	1/2" x 24"	89 dB	90 PSI	3.8 M/S2	16.9"	2.2 Lbs.
VT4505	12,000	24	0.7	1-3/16" x 21-1/4"	79 dB	85 PSI	3.1 M/S2	11-5/8"	5 Lbs.

Random Orbital Palm Sander Light Weight Aluminum Housing / Heavy Duty Motor (9,000 RPM, 1/4 HP) / One Piece Speed Control Lever / Reduced Sound From Rear-Exhaust Nozzle / Provides Higher Degree of Finishes On Metal, Wood & Composites / Non-Vacuum / 1 Year Warranty



VT4100 Random Orbital Palm Sander



VT4101 Random Orbital Palm Sander

Model	CFM	Pad Size	Noise	Air Inlet	Min. Hose	Max. Pressure	Vibration	Height	Weight
VT4100	5	6"	89 dB	1/4 NPT	3/8"	90 PSI	<2.5 M/S2	3-1/2"	1.9 Lbs.
VT4101	5	3-3/4" x 7-1/4"	89 dB	1/4 NPT	3/8"	90 PSI	<2.5 M/S2	3-1/2"	1.9 Lbs.

High Speed Sander Offers Unique Built-In Regulator Providing Precise Speed Control / Compact / Light Weight Design / 1/4 NPT Air Inlet / 3/8" Min. Hose Size / 90 PSI Max Pressure



V320 5" High Speed Rotary Sander



VT4300 5" High Speed Rotary Sander

Model	RPM	CFM	HP	Pad Size	Noise	Adapter	Vibration	Length	Weight	Warranty
VT4300	16,000	5	0.3	5"	99 dB	3/8"	0.2 M/S2	5.9"	2.3 Lbs.	1 yr.
V320	20,000	4	0.5	5"	84 dB	1/4"	<2.5 M/S2	6.5"	2.25 Lbs.	2 yr.

Dual Action Orbital Sander Offers Unique Built-In Regulator for Variable Speed Control / 4 CFM / 1/4 NPT Air Inlet / 3/8" Min. Hose Size / 1/4" Adapter / <2.5 M/S2 Vibration



V201 8" Mudslinger Sander (Gear Driven)



V200 6" Dual Action Orbital Sander

Model	RPM	CFM	Pad Size	Noise	Required Pressure	Vibration	Weight	Type of Pad Supplied
V200	10,000	4	6"	78 dB	60 PSI	<2.5 M/S2	4.5 Lbs.	6" P.S.A.
V201	900	4	8"	87 dB	80 PSI	<2.5 M/S2	5.5 Lbs.	8" P.S.A.
VT200	10,000	4	6"	96 dB	90 PSI	3.6 M/S2	3.75 Lbs.	1 yr. Warranty

Right Angle Sander / Polisher 1 HP Motor / 8 CFM Average Air Consumption / 1/4" NPT Air Inlet Size / 5/8"-11 Spindle Size / 7" Sanding Pad / Adjustable Speed Control / Unique Muffler Design / Standard Side handle Fits Left or Right Side



V716S Right Angle Sander
0-6,000 RPM Free Speed

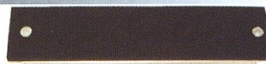


V716P Right Angle Polisher
0-4,000 RPM Free Speed

SANDING SHOES



V502 Hook-It Type (for V100)
V503 Klip Type (for V100)
V507 Stick-It Type (for V100)



V514 Stick-It Type (for V101)
V515 Klip Type (for V101)
V516 Hook-It Type (for V101)

For Full Line Product Information and Additional Information
VISIT SHINDUSTRIES.COM

©2013 S&H Industries, 5200 Richmond Road, Cleveland, Ohio 44146

Photographic or typographic errors are unintentional and subject to correction. Due to the nature of printing and our evolving production, product colors may vary the actual product.