



*Except where noted.

WORK STANDS

Economy Fender Stand Holds two fenders securely for prep and paint work / Adjustable arms support the skirts of fenders / Height adjustable / Economically priced / Entire stand folds for storage: 31"W x 38"L x 45"H



77786 Economy Fender Stand

Deluxe Bumper Stand

Complete bumper system includes support tubes, padded hoop & padded u-shaped brackets / Swivels 180° while holding the entire bumper securely / Adjusts up and down, in and out – works on the outside and inside of any bumper / Tubes extend to firmly hold "floppy ends" of plastic bumpers



77785 Deluxe Bumper Stand

Work Stands

Strong, safe, economical / Thick foam padding protects from scratching / Chain adjusts to different working heights / Galvanized, tubular steel construction



78024 "Knockdown" to 6 pieces so it can ship regular UPS

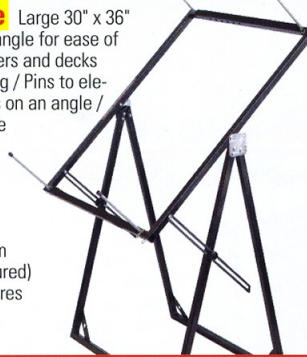
78022 250 lb. Capacity Work Stand

78024 400 lb. Capacity Knockdown Work Stand (Imported)

78023 500 lb. Capacity Work Stand

Vari Angle Table

Large 30" x 36" work table / Tilts to any angle for ease of work / Holds doors, fenders and decks while painting or prepping / Pins to elevate, hold or hang panels on an angle / Folds flat for easy storage



78025 Steel

Our lightweight aluminum vari angle table (not pictured) has the same great features and is great for welding

73025 Aluminum

Bumper Stand

Designed to hold the entire bumper securely / Tubes extend to firmly hold "floppy ends" of plastic bumpers / Adjusts up and down, in and out



77782 Bumper Stand

Bumper Rack

Save valuable shop floor space / Arms fold down to take up very little room when not in use / Holds 6 bumpers or more (18" arms can hold 2 small bumpers on same shelf) / 1" square steel tubing bolts to wall / 15" between arms



77784 Steel

Our lightweight aluminum bumper rack mounts anywhere and will not won't rust or corrode. They are 6 ft. long and holds up to 5 bumpers

73784 Aluminum

Van Stands

Sturdy work stand to reach tops of vans and trucks / Use to reach and service engines on large trucks / Safety yellow with non-skid surfaces Bolt two Deluxe Models together for a 12' long work surface!



77787 Deluxe Van Stand (6'L x 16"W x 24"H)

77781 Van Stand (48"L x 16"W x 18"H)

The Bull™

Holds everything: Bumpers, fenders, hoods, decks, spoilers, mirrors, doors



77814 The Bull

Pick-Up Bed Dolly

The most adjustable (Adjustable width holds mini (36") beds & full size beds (48") / Adjustable to 3 working heights: 21", 24", 27" / Heavy duty square steel tubing holds up to 1,000 lbs. / 4 large heavy swivel casters with 2 that lock / Ships UPS



77783 Steel

Our lightweight aluminum pick-up bed dolly is very strong – holds up to 800 lbs. / 4"W x 5'L / Holds beds large and small / Has 4" swivel casters (two are locking) / Folds flat in seconds / 36 lbs. / Heavy wall one-piece construction

73783 Aluminum

and More!

77727 Parts Cart: 3 Large shelves 24" x 46" / 52"H x 46"W x 24"D / Four wheels (two locking)



77788 Wheel Dollies: 4" heavy duty swivel wheels (two locking) / Fully welded all-steel frame / 2 piece set / Each holds 1500 lbs.



Aluminum Paint Hanger

Quick, easy, convenient to use / 7 ft. bar connects to frame that extends from 5 ft. to 8 ft. high / Hooks will hold any parts for painting or drying / Great for large hoods, doors, fenders or tailgates / Easy to roll around on large 4" wheels - (two are locking) / Six hooks to hang parts

73735 Aluminum Paint Hanger

The Pail Tipper

78031 Double / 78030 Single Holds standard 5 gallon pail (1 or 2) / All-steel tube construction / Formed handle for easy pouring



Bumpers, fenders and tools are not included with workstands.

For Full Line Product Information and Additional Information VISIT SHINDUSTRIES.COM

©2013 S&H Industries, 5200 Richmond Road, Cleveland, Ohio 44146

Photographic or typographic errors are unintentional and subject to correction. Due to the nature of printing and our evolving production, product colors may vary the actual product.

ALIGNMENT & LEVERAGE TOOLS

Hustler Stick

Indispensable when versatility of a chain hookup is needed / Aligns bumpers, panels, hoods, decks and brackets / Heavy duty 1-1/4" diameter tubing with twohooks for strength & versatility / 1/4" chain, 6' long

Set Contains:
77097 Chain
77379 Rubber Feet
77351 Round Square



77175 Hustler Stick

Leverage Bar

Ideal for bumpers, doors, hoods, decks and panel alignment / Eliminates costly ram type setups for most jobs / Hooks are high carbon steel, heat treated & tempered / Heavy-duty rubber foot prevents slipping and swivels / 1-1/4" diameter tubing & double welded bottom with machined holes provide strength and versatility

Set Contains:
77360 Hinge Hook
77361 Base Foot
77362 Adjustment Bar



77349 Leverage Bar

Door Hinge Aligner

New improved design features heavy duty round bar and solid steel pivot pin / Round bar swivels for perfect alignment / Adjust up or down on both conventional and welded hinges / Can be used on all vehicles

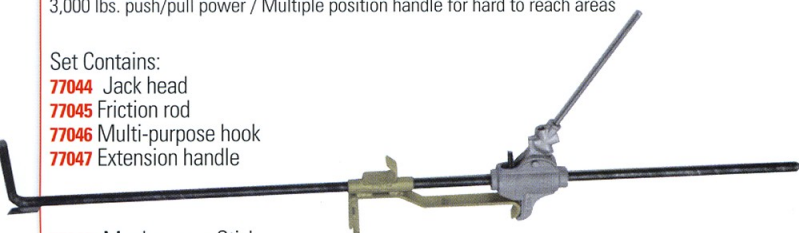
Set Contains:
77557 Bar
77558 Latch Assembly



77554 Door Hinge Aligner

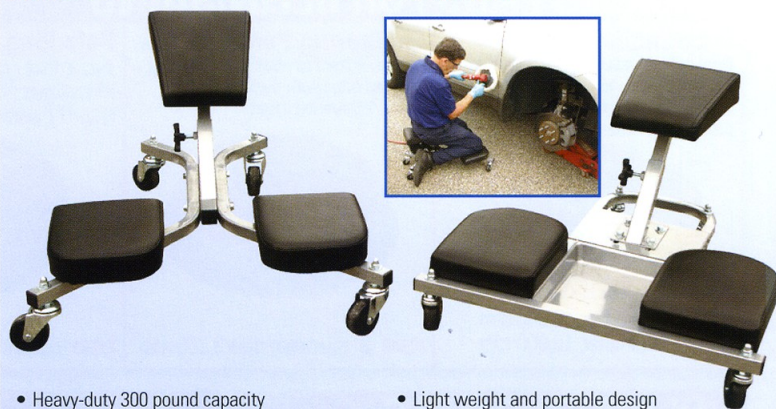
The Monkey on a Stick Four-piece jack set / Most versatile tool available / Pushes, pulls, aligns, spreads, straightens / Ready to use / A must for long reaches / 55" long solid alloy 3/4" rod eliminates need for extension tubes / 5 Hardened friction plates for minute adjustments / Up to 3,000 lbs. push/pull power / Multiple position handle for hard to reach areas

Set Contains:
77044 Jack head
77045 Friction rod
77046 Multi-purpose hook
77047 Extension handle



77043 Monkey on a Stick

KNEE SAVER WORK SEATS

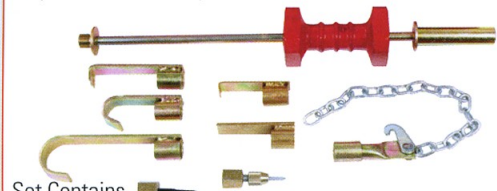


- Heavy-duty 300 pound capacity
- Powder coated frame for durability
- Work seats feature adjustable height and tilt for multiple positions
- Work seat **78032** has a convenient tool tray built into the frame
- Casters evenly distribute weight & add balance to work seat
- Light weight and portable design
- Knee pads and seat are thickly padded for comfort on long jobs
- Saves time - Quickly and easily roll about when preforming repairs
- Unique kneeling position reduces pressure on lower back
- Imported

78033 Knee Saver Work Seat | **78032** Knee Saver Work Seat With Tray

DENT PULLERS & ACCESSORIES

Knocker Sr. The highest quality 12 lb. dent puller available / More exclusive features / Square slide hammer does not roll away out of reach / Solid 5/8" high carbon steel slide shaft is the strongest offered anywhere / All attachments are heat treated and plated for strength and a lasting finish / Variety of attachments for any body pulling application / 3/4" pipe end nose adapter is machined and plated / Hex broached nose piece



Set Contains
77068 Hammer and Shaft
77069 Claw
77070 Short Hook
77071 Deep Hook
77072 Door Edge Tool
77073 Hook and Chain
77074 Straight Driver
77075 Nose Piece
77381 Board (77076)
77080 Tool Box (77081)
77077 Hammer Only
77772 Shaft Only
77771 Threaded Adapter

77076 On a Board | **77081** In a Box

5 lb. Tools



Set Contains:
77632 Hammer & Shaft (1/2 - 20)
77633 Nose Piece
77634 "L" Puller & Screws
77635 Door Edge Tool/Nuts
 Imported Set Contains:
77086 Hammer & Shaft (1/2 - 20)
77088 Nose Piece
77089 "L" Puller & Screws
77090 Door Edge Tool/Nuts

77631 5 lb. Tool

Suction Disc Pull panel dents safely and easily without drilling holes / Lipped edge provides strong hold yet allows easy release of vacuum / No trigger to gum up or break off / All steel parts gold plated / Ideal for handling sheet metal, glass, or plastic / Patented



77130 6" Vacuum Suction Disk
77131 8" Vacuum Suction Disk

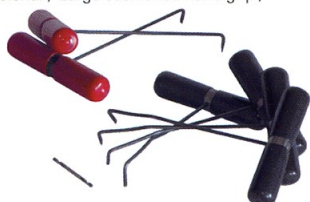
Suction Disc 4-1/2" diameter cup provides powerful suction / New lip design holds tight / Perfect for pulling metal panels / Handles sheet metal, glass or plastic



77264 Economy Suction Cup Dent Puller

Pull Rod Kit Repairs dents and creases from the outside / Designed for the professional / Large cushioned hand grip / Imported

Set Contains
77344 Straight rod
77345 Bent rod



77271 Pull Rod Kit

Economy Pull Rods

Pull rods feature plated rods and thick vinyl grip handles / Imported



77323 Straight | **77324** Bent

Pulling Clamp

Versatile / For use on KEYSKO knockers / Great for getting into tight places such as pinch welds on today's cars / Threaded 3/4 pipe



77091 Pulling Clamp

Golden Spike Finish ground point for easy metal piercing / Eliminates pre-drilling / Tapered for use in smaller holes / Grips metal securely without slipping / Heat treated, rust-resistant finish / 3/8 - 24 thread



77149 Golden Spike

Adapter	Shaft Thread Size	
77139	3/8 - 24	(3/8 Fine)
77141	7/16 - 14	(7/16 Coarse)
77134	1/2 - 13	(1/2 Coarse)
77140	1/2 - 20	(1/2 Fine)
77143	5/8 - 11	(5/8 Coarse)
77144	5/8 - 18	(5/8 Fine)
77078	3/4 Pipe Thread	