

# F1960 Brass PEX Coupling

Job Name	_____
Location	_____
Engineer	_____
Contractor	_____
Tag	_____ PO# _____

## Specifications

Manufactured to the highest industry standards, Jones Stephens' F1960 lead-free brass cold expansion fittings provide precise, secure, and leak-free connections. Made with DZR brass, F1960 cold expansion fittings are corrosion and chlorine/chemical resistant – making them a great fit for aggressive water environments. Approved for use with PEX-A piping. Can be used with F1960 PEX rings.

## Applications

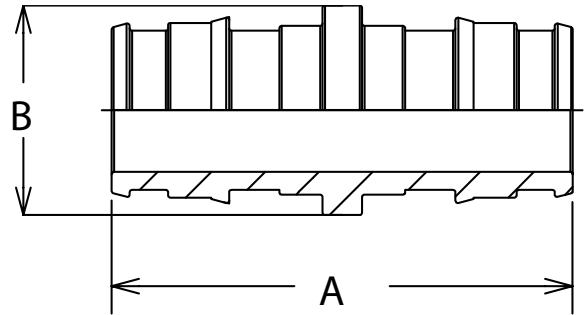
Jones Stephens' F1960 Brass PEX 90° Couplings are approved for use with commercial and residential non-potable water applications.

## Materials

Lead-free DZR brass

## Certifications/Listings/Approvals

- ASTM F1960-2021
- NSF/ANSI/CAN 61-2021
- NSF/ANSI/CAN 372-2022
- NSF/ANSI 14-2015
- CSA B137.5-2020
- Lead Law Compliant



	ID	OD
F1960 Specified Dimensions	in (mm)	in (mm)
1/2" End Connection	.41(10.33)	.61(15.59)
5/8" End Connection	.53(13.40)	.74(18.90)
3/4" End Connection	.62(15.80)	.87(22.10)
1" End Connection	.83(21.00)	1.11(28.10)
1-1/4" End Connection	.80(20.32)	1.36(35.54)
1-1/2" End Connection	1.08(27.43)	1.49(37.85)
2" End Connection	1.56(39.62)	2.08(52.83)

**PRODUCT OFFERING ON PAGE 2**

## Dimensions and Product Offering

PART NO.	SIZE	A - IN (MM)	A TOLERANCE ±IN(MM)	B - IN (MM)	B TOLERANCE ±IN(MM)	WEIGHT - LBS (G)	WEIGHT TOLERANCE ±LBS (G)
<b>F76854</b>	0.50"	1.52 (38.50)	0.36 (9.07)	0.69 (17.50)	0.04 (0.912)	0.06 (27.22)	0.02 (10.89)
<b>F76855</b>	0.50"x 0.75"	1.75 (44.50)	0.36 (9.07)	0.94 (24.00)	0.04 (0.912)	0.09 (40.82)	0.02 (10.89)
<b>F76891</b>	0.62"	1.83 (46.50)	0.36 (9.07)	0.83 (21.0)	0.04 (0.912)	0.08 (36.29)	0.02 (10.89)
<b>F76857</b>	0.75"	1.99 (50.50)	0.36 (9.07)	0.94 (24.00)	0.04 (0.912)	0.10 (45.36)	0.02 (10.89)
<b>F76856</b>	0.75" x 1.00"	2.22 (56.50)	0.36 (9.07)	1.18 (30.00)	0.04 (0.912)	0.16 (72.57)	0.02 (10.89)
<b>F76853</b>	1.00"	2.46 (62.50)	0.36 (9.07)	1.18 (30.00)	0.04 (0.912)	0.20 (90.72)	0.02 (10.89)