

# F1960 Poly PEX Plug

Job Name	_____
Location	_____
Engineer	_____
Contractor	_____
Tag	_____ PO# _____

## Specifications

Manufactured to the highest industry standards, Jones Stephens' F1960 cold expansion fittings provide precise, secure, and leak-free connections. Made with strong polymer material, F1960 cold expansion fittings are corrosion and chlorine/chemical resistant – making them a great fit for aggressive water environments. Approved for use with PEX-A piping. Can be used with F1960 PEX rings.

## Applications

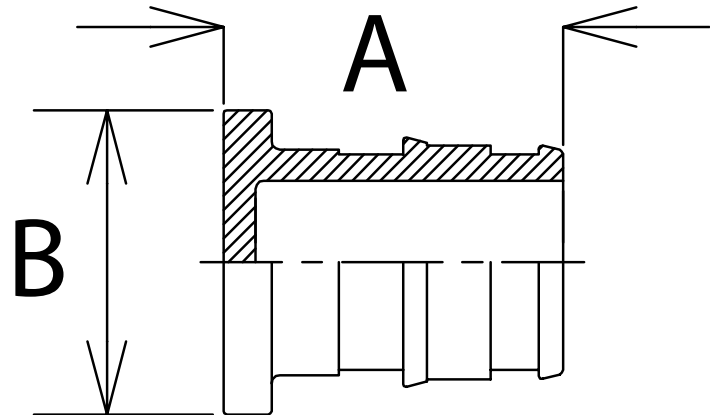
Jones Stephens' F1960 Poly PEX Plugs are approved for use with commercial and residential non-potable water applications.

## Materials

Polymer construction. Manufactured of premium-grade resin with non-mixed blends.

## Certifications/Listings/Approvals

- ASTM F1960-2018a
- ASTM F877-2020
- NSF/ANSI/CAN 61-2022
- NSF/ANSI 14-2016a
- NSF/ANSI/CAN 372-2022
- CSA B137.5-2020



	ID	OD
F1960 Specified Dimensions	in (mm)	in (mm)
1/2" End Connection	.40(10.20)	.61(15.59)
3/4" End Connection	.61(15.60)	.87(22.10)
1" End Connection	.82(20.80)	1.11(28.10)
1-1/4" End Connection	.97(24.64)	1.36(35.54)
1-1/2" End Connection	1.08(27.43)	1.49(37.85)
2" End Connection	1.48(37.59)	2.08(52.82)

**PRODUCT OFFERING ON PAGE 2**

**Dimensions and Product Offering**

PART NO.	SIZE	A - IN (MM)	A TOLERANCE ±IN(MM)	B - IN (MM)	B TOLERANCE ±IN(MM)	WEIGHT - LBS (G)	WEIGHT TOLERANCE ±LBS (G)
<b>F76768</b>	0.50"	0.83 (21.18)	0.01 (0.36)	0.85 (21.71)	0.01 (0.27)	0.02 (6.80)	0.01 (2.27)
<b>F76769</b>	0.75"	1.07 (27.30)	0.005 (0.13)	1.16 (29.58)	0.07 (1.79)	0.02 (6.80)	0.01 (2.27)
<b>F76771</b>	1.00"	1.31 (33.21)	0.01 (0.21)	1.39 (35.42)	0.06 (1.63)	0.03 (11.34)	0.01 (2.27)
<b>F76068</b>	1.25"	1.61 (41.00)	0.01 (0.25)	1.69 (43.00)	0.01 (0.25)	0.05 (21.31)	0.01 (2.27)
<b>F76069</b>	1.50"	1.87 (47.60)	0.01 (0.25)	1.97 (50.00)	0.01 (0.25)	0.07 (30.35)	0.01 (2.27)
<b>F76070</b>	2.00"	2.35 (59.80)	0.01 (0.25)	2.64 (67.00)	0.01 (0.25)	0.16 (74.82)	0.01 (2.27)