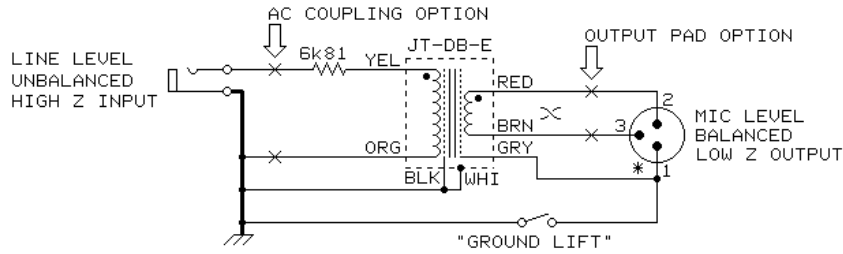
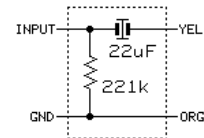


JT-DB-E STANDARD MUSICAL INSTRUMENT or SYNTHESIZER "DIRECT BOX"

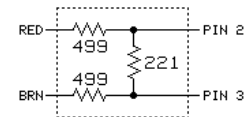


* THE HOUSING OF THE OUTPUT CONNECTOR SHOULD BE INSULATED FROM THE CHASSIS. IF MATING CONNECTORS TIE PIN 1 TO THE SHELL, THE GROUND LIFT SWITCH WILL HAVE NO EFFECT.

THE AC COUPLING OPTION SHOULD BE USED IF THE INPUT MAY BE FROM A POWERED DEVICE, WHICH MAY HAVE DC VOLTAGE ON ITS OUTPUT. THE CAPACITOR IS A 22 μ F 25V NON-POLAR TYPE, PANASONIC ECE-A1EN220S OR EQUIVALENT.



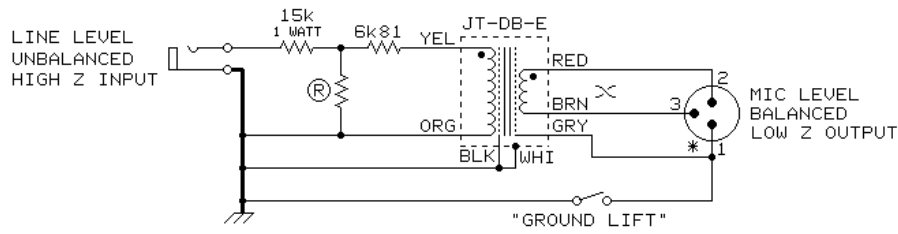
THE OUTPUT PAD SHOULD BE USED WHEN THE INPUT SIGNAL IS COMING FROM A HIGH OUTPUT ELECTRONIC INSTRUMENT OR WHEN THE OUTPUT IS GOING TO BE CONNECTED TO A CABLE THAT IS LONGER THAN 10 OR 15 FEET. THE PAD WILL ISOLATE THE TRANSFORMER OUTPUT FROM THE CAPACITIVE LOADING OF THE CABLE, PREVENTING A RISE IN RESPONSE AT HIGHER FREQUENCIES. THE OUTPUT LEVEL IS NORMALLY ABOUT 23 dB BELOW THE INPUT. THE PAD ADDS ANOTHER 15 dB OF ATTENUATION, MAKING THE TOTAL ATTENUATION ABOUT 37 dB.



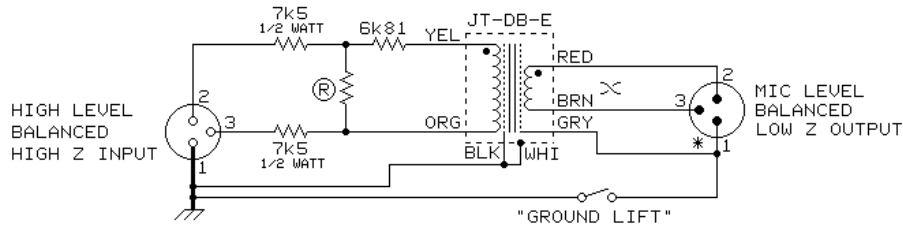
© COPYRIGHT 1992, 1995 JENSEN TRANSFORMERS, INC.

jensen	AS007
	09/13/95
7135 HAYVENHURST AVE. VAN NUYS, CALIFORNIA 91406 (818) 374-5857	

JT-DB-E "DIRECT BOX" FOR VERY HIGH LEVEL SIGNALS (UP TO 120 URMS)



* THE HOUSING OF THE OUTPUT CONNECTOR SHOULD BE INSULATED FROM THE CHASSIS. IF MATING CONNECTORS TIE PIN 1 TO THE SHELL, THE GROUND LIFT SWITCH WILL HAVE NO EFFECT.

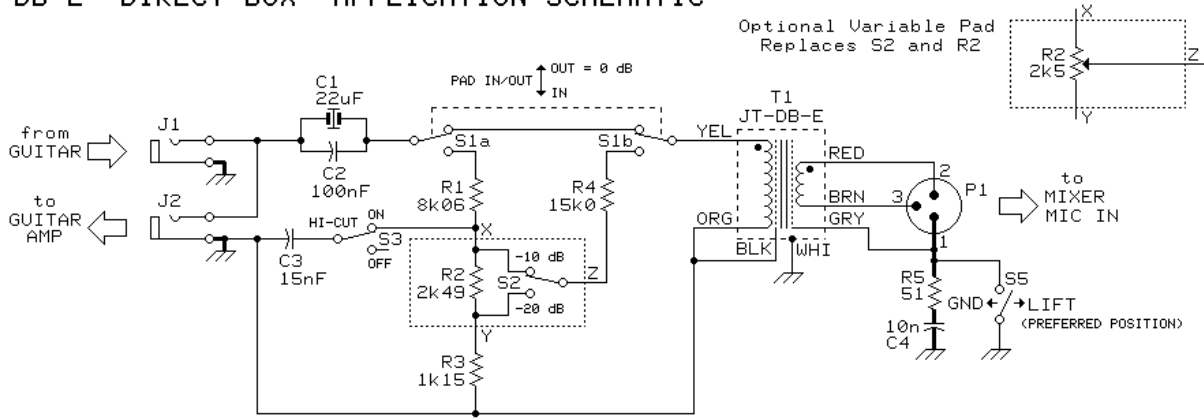


A RESISTIVE PAD, EITHER UNBALANCED OR BALANCED, IS USED TO ATTENUATE VERY HIGH LEVEL INPUT SIGNALS. FOR EXAMPLE, BRIDGING THE SPEAKER OUTPUT LINES OF A POWER AMPLIFIER IN THE 100 WATT RANGE MAY REQUIRE 52 dB OF ATTENUATION TO PRODUCE A REASONABLE MIC OUTPUT LEVEL. ATTENUATION IS SET BY THE VALUE OF R :

OVERALL INPUT TO OUTPUT LOSS
LOSS = 42 dB FOR $R = 1k65$
LOSS = 52 dB FOR $R = 150$

jensen	AS008
	09/13/95
7135 HAYVENHURST AVE. VAN NUYS, CALIFORNIA 91406 (818) 374-5857	

JT-DB-E "DIRECT BOX" APPLICATION SCHEMATIC



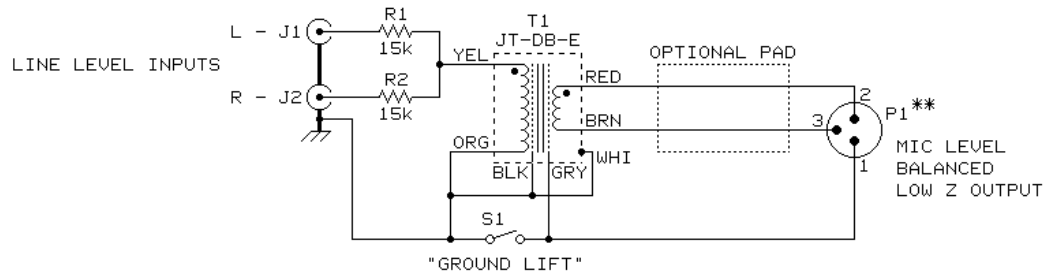
J1 and J2 are 1/4" phone jacks, Switchcraft #11 or equivalent.
 C1 is a high quality 25 V bipolar aluminum electrolytic, Panasonic ECE-A1EN220X or equivalent.
 C2 and C3 are high quality 50 V polypropylene, Panasonic "P Series" or equivalent
 C4 is a 100 V ceramic disc and R5 is a 5% 1/4 watt carbon film resistor used to suppress RFI.
 All resistors except R5 are high quality 1% 1/4 watt metal film, Roederstein/Resista MK-2 or equivalent.
 Gold plated contacts are recommended for switches S1 thru S3 and P1.
 P1 is XLR 3 pin connector with gold contacts, Switchcraft D3MAU or equivalent.
 Optional R2 is a 2.5 kΩ linear taper potentiometer, conductive plastic element preferred.
 A parts kit containing standard parts R1 thru R5 and C1 thru C5 is available from Jensen. Order DB-PK-1.

NOTES:

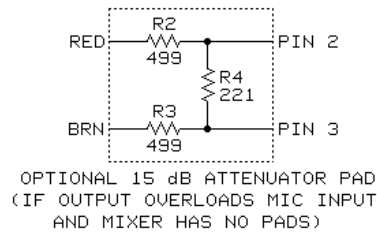
PAD SHOULD GENERALLY BE SWITCHED IN FOR HIGH OUTPUT SOURCES SUCH AS SYNTHESIZERS, GUITAR AMP OUTPUTS, ETC.
 HIGH CUT SWITCH WORKS ONLY IF PAD IS SWITCHED IN.

jensen	AS066
	12/3/96
7135 HAYVENHURST AVE. VAN NUYS, CALIFORNIA 91406 (818) 374-5857	

JT-DB-E CONVERTS CONSUMER STEREO INPUTS TO MONO BALANCED MIC OUTPUT



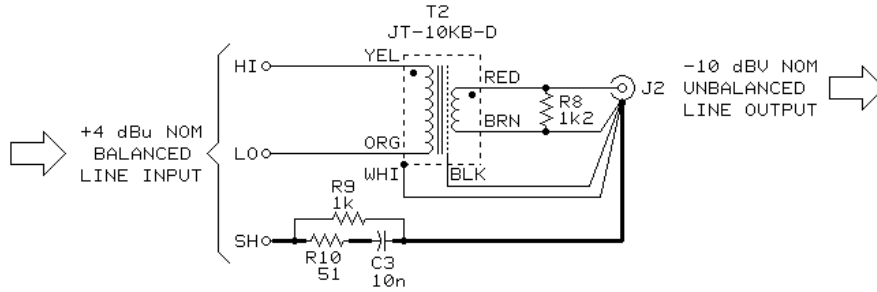
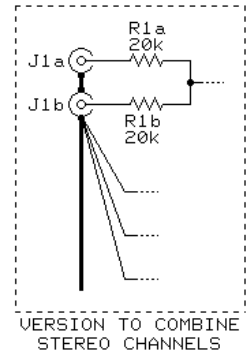
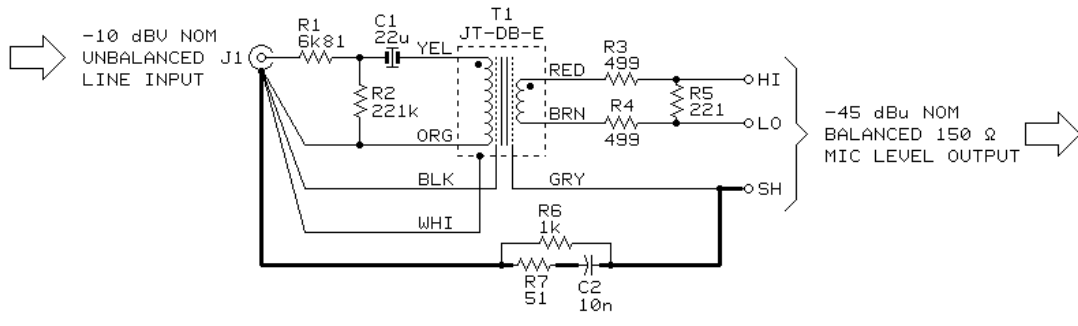
** THE HOUSING OF P1 SHOULD BE INSULATED FROM THE CHASSIS; OTHERWISE, IF THE MATING CONNECTOR USED HAS PIN 1 TIED TO THE SHELL, THE GROUND LIFT SWITCH WILL HAVE NO EFFECT.



OPTIONAL 15 dB ATTENUATOR PAD
(IF OUTPUT OVERLOADS MIC INPUT
AND MIXER HAS NO PADS)

jensen	AS078
	01/14/98
7135 HAYVENHURST AVE. VAN NUYS, CALIFORNIA 91406 (818) 374-5857	

JT-10KB-D & JT-DB-E PROVIDE "J-BOX" CONSUMER to STUDIO INTERFACE



NOTES

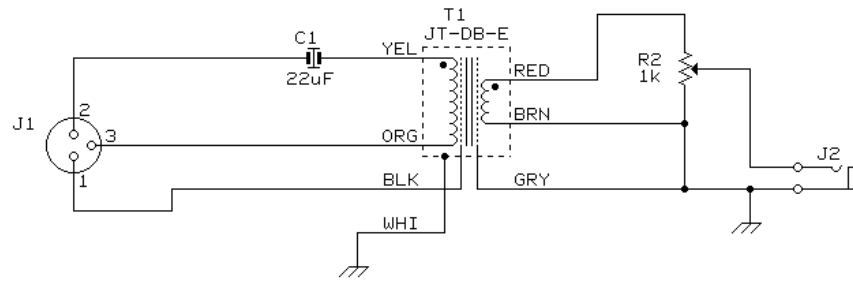
1. R1 THRU R5 ARE ±1% 1/4w METAL FILM RESISTORS, RATED IN OHMS (6k81 = 6.81 kΩ)
2. R6 THRU R10 ARE ±5% 1/4w CARBON FILM RESISTORS, RATED IN OHMS (1k2 = 1.2 kΩ)
3. C1 IS ±20%, 25 V BI-POLAR ELECTROLYTIC CAPACITOR, PANASONIC ECE-A1EN220S OR EQUIV.
4. C2 AND C3 ARE ±20%, 100 V OR HIGHER DISC CERAMIC CAPACITORS
5. WIRES SHOWN AS — SHOULD BE AS SHORT AND DIRECT AS POSSIBLE
6. RCA JACKS SHOULD BE INSULATED FROM J-BOX PANEL UNLESS BOX ELECTRICALLY "FLOATS"

© COPYRIGHT 1997, JENSEN TRANSFORMERS, INC.

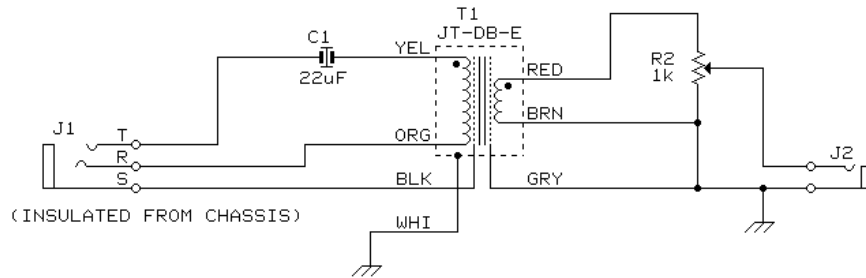
jensen	AS081
	01/17/97
7135 HAYVENHURST AVE. VAN NUYS, CALIFORNIA 91406 (818) 374-5857	

JT-DB-E IN HAM RADIO LINE LEVEL TO MIC LEVEL CIRCUIT

**XLR
INPUT
WIRING**



**1/4" PHONE
INPUT
WIRING**



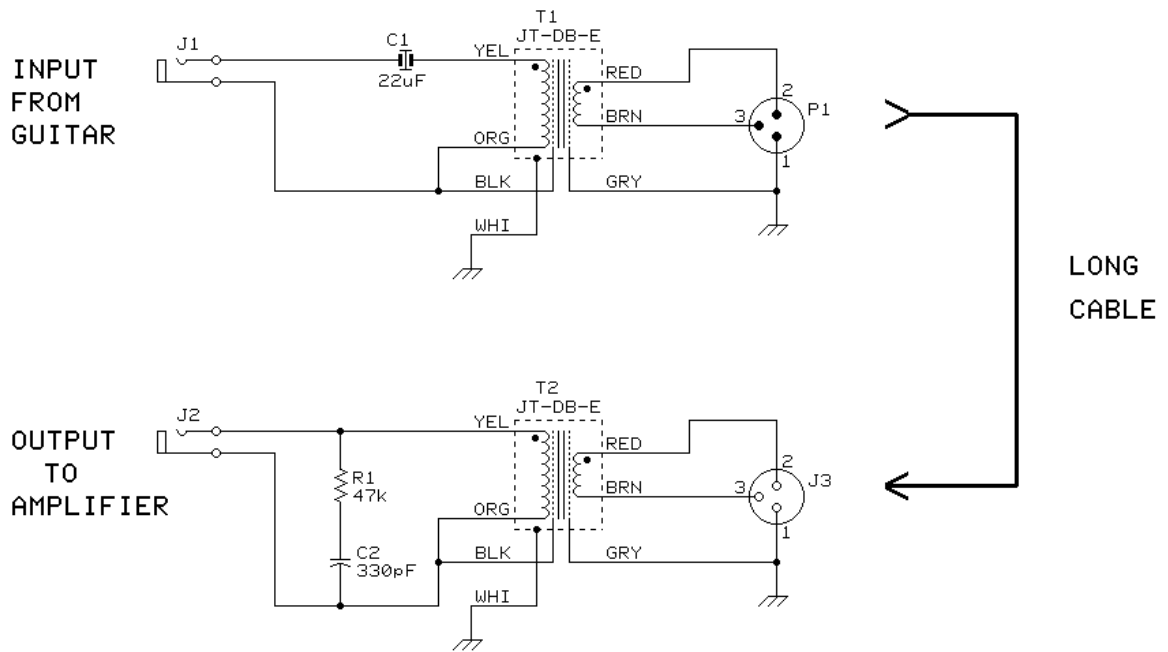
NOTES:

- 1) R2 IS AUDIO TAPER POTENTIOMETER.
- 2) C1 IS 16 VOLT NON-POLARIZED CAPACITOR.
- 3) BUILD IN SMALL ALUMINUM BOX FOR R.F. SHIELDING.
- 4) 1/4" INPUT JACK SHOULD BE ISOLATED FROM CHASSIS USING SHOULDER WASHERS, IF THAT STYLE INPUT IS USED.

© COPYRIGHT 2002, JENSEN TRANSFORMERS, INC.

jensen	AS096
	11/20/02
7135 HAYVENHURST AVE. VAN NUYS, CALIFORNIA 91406 (818) 374-5857	

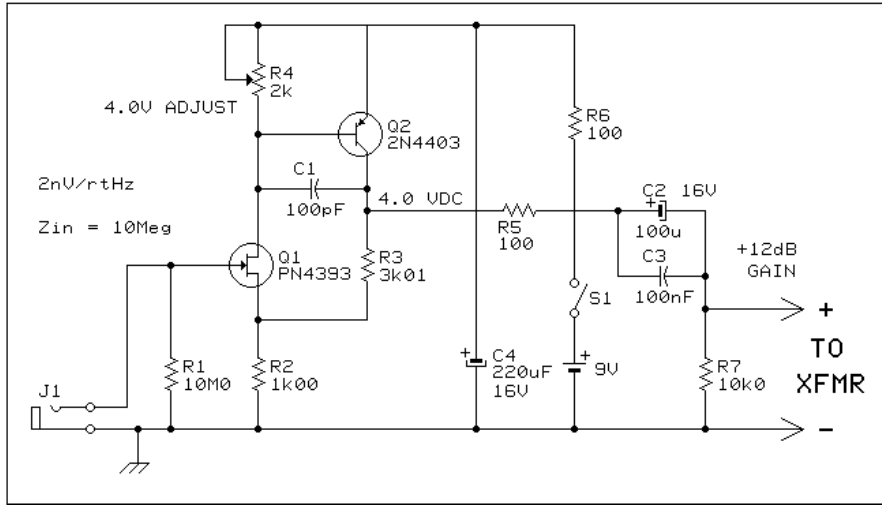
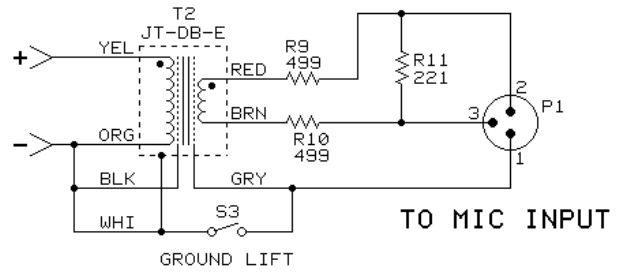
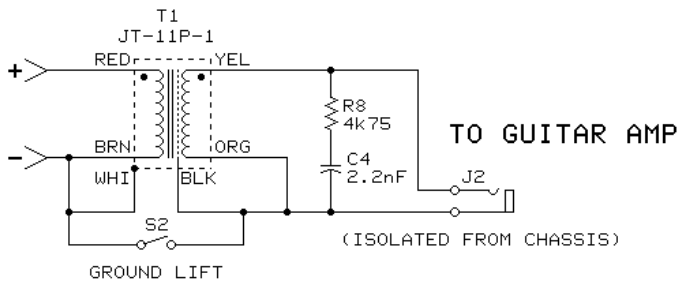
JT-DB-E IN GUITAR TO AMP LONG LINE CIRCUIT



NOTES: J1 AND J2 SHOULD BE ISOLATED FROM THE CHASSIS.

jensen	AS097
	01/20/03
7135 HAYVENHURST AVE. VAN NUYS, CALIFORNIA 91406 (818) 374-5857	

HIGH IMPEDANCE PIEZO AMPLIFIER



NOTES:

- 1) EITHER OR BOTH OUTPUT OPTIONS MAY BE USED.
- 2) IF ISOLATION IS NOT REQUIRED, BUFFER MAY BE CONNECTED DIRECTLY TO 1/4" OUTPUT JACK.
- 3) C1, C3 AND C4 ARE 50V POLYPROPYLENE.

HIGH IMPEDANCE BUFFER WITH 12dB GAIN

© COPYRIGHT 2003, JENSEN TRANSFORMERS, INC.

jensen	AS098
	04/30/03
7135 HAYVENHURST AVE. VAN NUYS, CALIFORNIA 91406 (818) 374-5857	