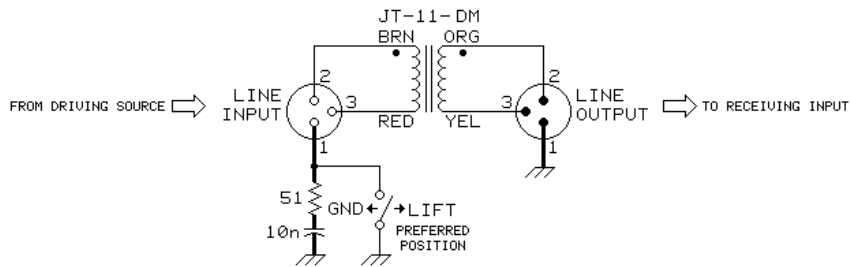


## JT-11-DM BASIC "HUM STOPPER" TRANSFORMER ISOLATION BOX



AN OUTPUT TRANSFORMER BOX CAN BE VERY USEFUL TO REDUCE OR ELIMINATE "HUM" IN AUDIO SYSTEMS. IT WILL USUALLY DO A GOOD JOB AT ELIMINATING "HUM", BUT IS MUCH LESS EFFECTIVE AT THE HIGHER FREQUENCIES CONTAINED IN "BUZZ". IT WILL ALSO ALLOW AN "ACTIVE BALANCED" OUTPUT TO DRIVE GROUNDED (UNBALANCED) LOADS. AN INPUT TRANSFORMER, INSTALLED AT THE CABLE'S RECEIVE END, IS THE BEST SOLUTION FOR BOTH "HUM" AND "BUZZ". <SEE JENSEN AN003 FOR MORE DETAILED INFORMATION>

1. FOR LOWEST DISTORTION, OUTPUT IMPEDANCE OF THE DRIVING SOURCE SHOULD BE 600Ω OR LESS.
2. IF A METAL BOX IS USED, THE HOUSING OF J1 SHOULD BE INSULATED FROM IT BECAUSE, SHOULD THE MATING CONNECTOR HAVE PIN 1 TIED TO ITS SHELL, THE GROUND LIFT SWITCH WOULD HAVE NO EFFECT.
3. THE SERIES RC NETWORK PROVIDES SHIELD TERMINATION AT RADIO FREQUENCIES TO HELP REDUCE RFI PROBLEMS AT THE SYSTEM LEVEL.

**jensen**

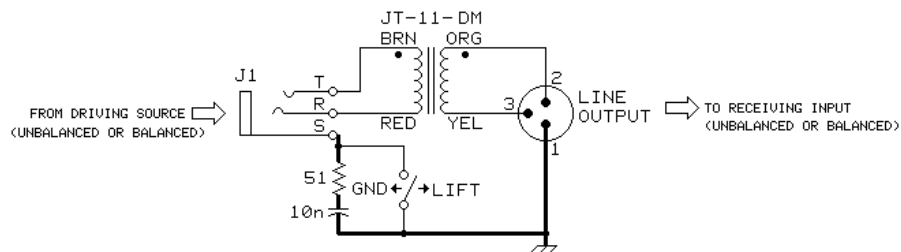
AS036

09/19/95

7135 HAYVENHURST AVE.  
VAN NUYS, CALIFORNIA 91406  
(818) 374-5857

© COPYRIGHT 1992, 1995 JENSEN TRANSFORMERS, INC.

## JT-11-DM CONVERTS UNBALANCED OUTPUT TO BALANCED



IF A 3-CONDUCTOR (SHIELDED TWISTED PAIR) PATCH CABLE IS USED AND IS PLUGGED INTO A 2-CONDUCTOR (UNBALANCED) PHONE JACK, SHIELD CURRENTS ARE PREVENTED FROM FLOWING IN THE SIGNAL CONDUCTOR, WHICH CAN DRAMATICALLY REDUCE HUM. THIS IS ESPECIALLY TRUE IN CASES WHERE THE DRIVING SOURCE FLOATS (2 PIN AC PLUG) AND MUST GET A GROUND REFERENCE THROUGH ITS SHIELD (AND THIS BOX). OF COURSE, 2-CONDUCTOR PLUGS AND PATCH CABLES WILL WORK (KEEP THEM AS SHORT AS POSSIBLE), BUT 3-CONDUCTOR PATCH CORDS WILL WORK MUCH BETTER.

AN OUTPUT TRANSFORMER BOX CAN BE VERY USEFUL TO REDUCE OR ELIMINATE "HUM" IN AUDIO SYSTEMS. IT WILL USUALLY DO A GOOD JOB AT ELIMINATING "HUM", BUT IS MUCH LESS EFFECTIVE AT THE HIGHER FREQUENCIES CONTAINED IN "BUZZ". AN INPUT TRANSFORMER, INSTALLED AT THE CABLE'S RECEIVE END, IS THE BEST SOLUTION FOR BOTH "HUM" AND "BUZZ". SEE JENSEN AN003 FOR ADDITIONAL DETAILS.

### NOTES

1. FOR LOWEST DISTORTION, OUTPUT IMPEDANCE OF THE DRIVING SOURCE SHOULD BE 600Ω OR LESS.
2. IF A METAL BOX IS USED, THE HOUSING OF J1 SHOULD BE INSULATED FROM IT BECAUSE, IF NOT, THE GROUND LIFT SWITCH WILL HAVE NO EFFECT.
3. THE SERIES RC NETWORK PROVIDES SHIELD TERMINATION AT RADIO FREQUENCIES TO HELP REDUCE RFI PROBLEMS AT THE SYSTEM LEVEL.

**jensen**

AS052

09/19/95

7135 HAYVENHURST AVE.  
VAN NUYS, CALIFORNIA 91406  
(818) 374-5857

© COPYRIGHT 1992, 1995 JENSEN TRANSFORMERS, INC.