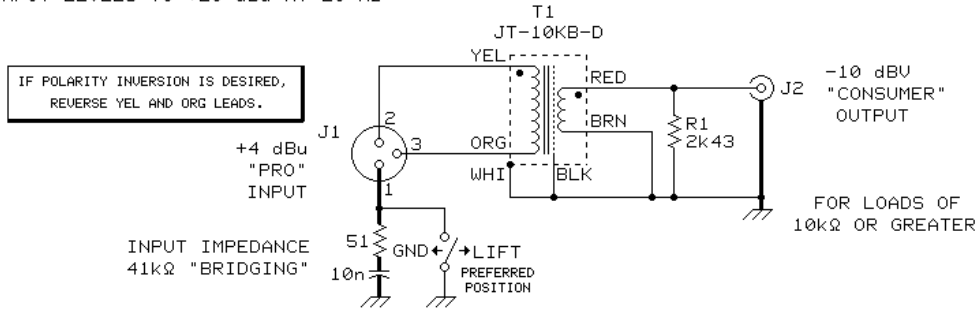
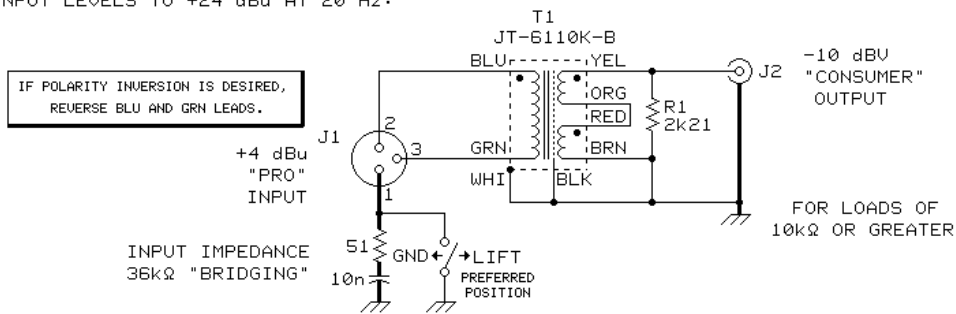


JT-10KB-D & JT-6110K-B "PRO" TO "CONSUMER" INTERFACES

FOR INPUT LEVELS TO +20 dBu AT 20 Hz:



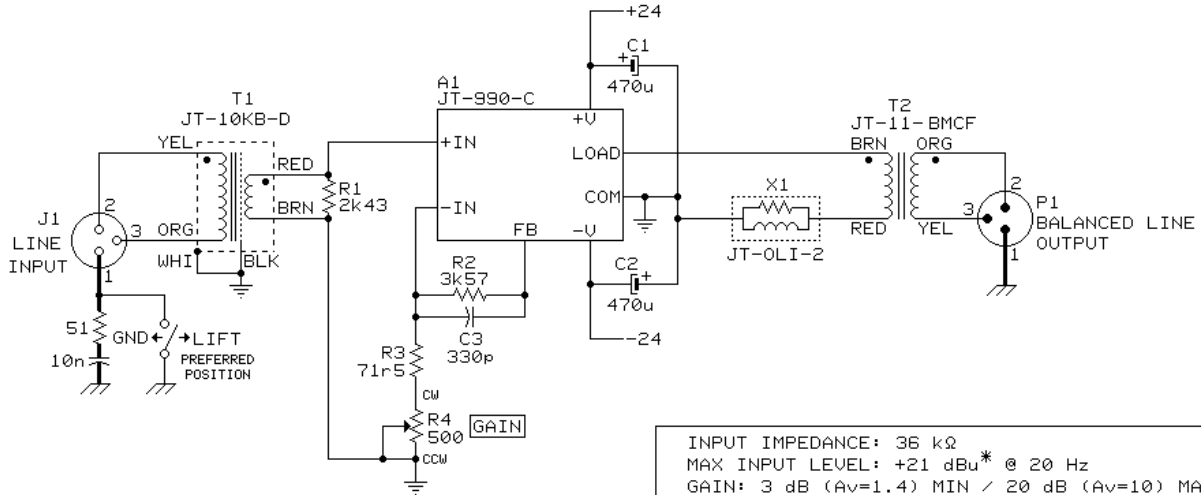
FOR INPUT LEVELS TO +24 dBu AT 20 Hz:



jensen	AS012
	09/13/95
7135 HAYVENHURST AVE. VAN NUYS, CALIFORNIA 91406 (818) 374-5857	

JT-10KB-D + JT-990-C + JT-11-BM = ULTRA-HIGH PERFORMANCE LINE DRIVER

THIS DRIVER SUITABLE FOR LOADS OF 300Ω MINIMUM AND UP TO 500 FEET OF TYPICAL CABLE



INPUT IMPEDANCE: 36 kΩ
 MAX INPUT LEVEL: +21 dBu* @ 20 Hz
 GAIN: 3 dB (Av=1.4) MIN / 20 dB (Av=10) MAX
 FREQUENCY RESPONSE: -0.2 dB @ 10 Hz & 25 kHz
 -3.0 dB @ 0.90 Hz & 150 kHz
 MAX OUTPUT LEVEL: +26 dBu INTO 600 Ω LOAD
 DISTORTION: <0.03% THD @ +20 dBu 20 Hz OUTPUT
 FULL POWER BANDWIDTH: 150 kHz
 OUTPUT SOURCE IMPEDANCE: 80 Ω
 DEVIATION FROM LINEAR PHASE: <1° 20 Hz TO 20 kHz
 SUPPLY CURRENT: 25 mA QUIESCENT, 300 mA MAX

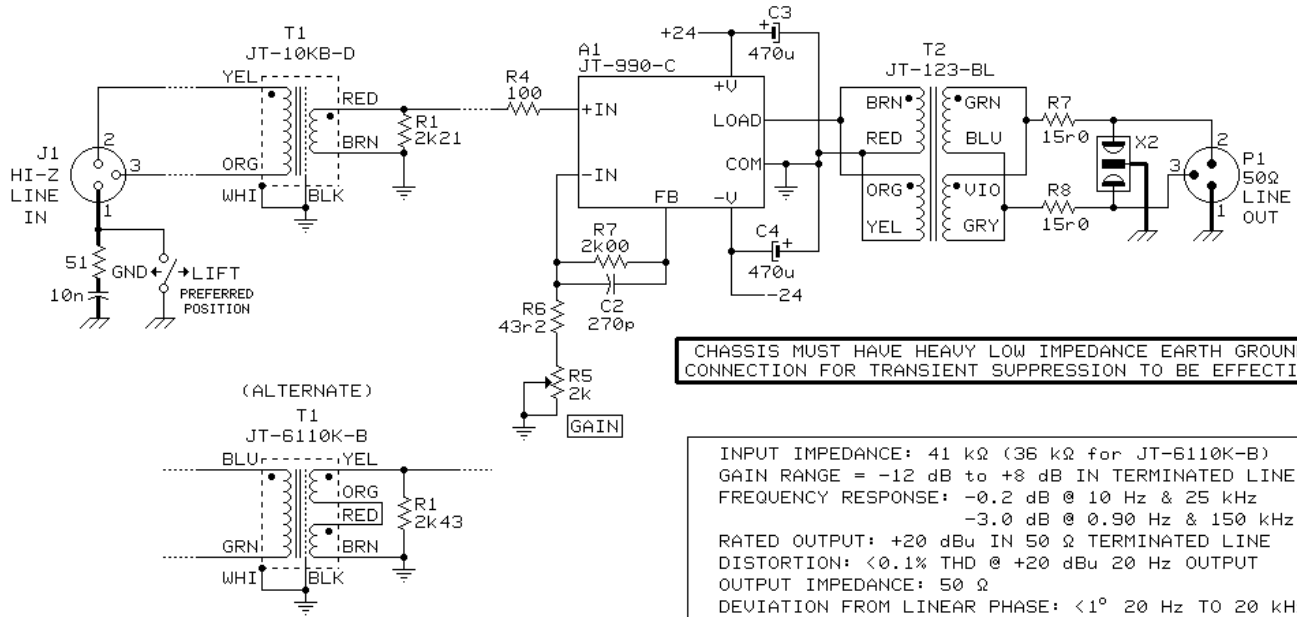
NOTES

- 1.*MAX INPUT LEVEL CAN BE INCREASED TO +24 dBu BY SUBSTITUTING JT-6110K-B AT T1.
2. POTENTIOMETER R4 MAY BE LINEAR OR REVERSE LOG TAPER, CONDUCTIVE PLASTIC TYPE RECOMMENDED.
3. ALL RESISTORS ARE ±1% 1/4w METAL FILM TYPES, ROEDERSTEIN MK2-1 OR EQUIVALENT
 (2k21 = 2.21 kΩ, 71r5 = 71.5 Ω)
4. ALL CAPACITORS ARE POLYPROPYLENE, POLYSTYRENE, OR NP0/C0G CERAMIC TYPES
5. USE GOOD HIGH FREQUENCY CONSTRUCTION TECHNIQUES. USE OF POWER & GROUND PLANES IS HIGHLY RECOMMENDED.
6. X1 IS JENSEN #JT-OLI-2 LOAD ISOLATOR.

jensen	AS027
	09/18/95
7135 HAYVENHURST AVE. VAN NUYS, CALIFORNIA 91406 (818) 374-5857	

JT-10KB-D + JT-990-C + JT-123-BL = 50Ω LONG LINE DRIVER

DRIVES 2000 FEET OF BELDEN 8451 CABLE WITH >60 kHz BANDWIDTH AND NO SQUARE WAVE OVERSHOOT



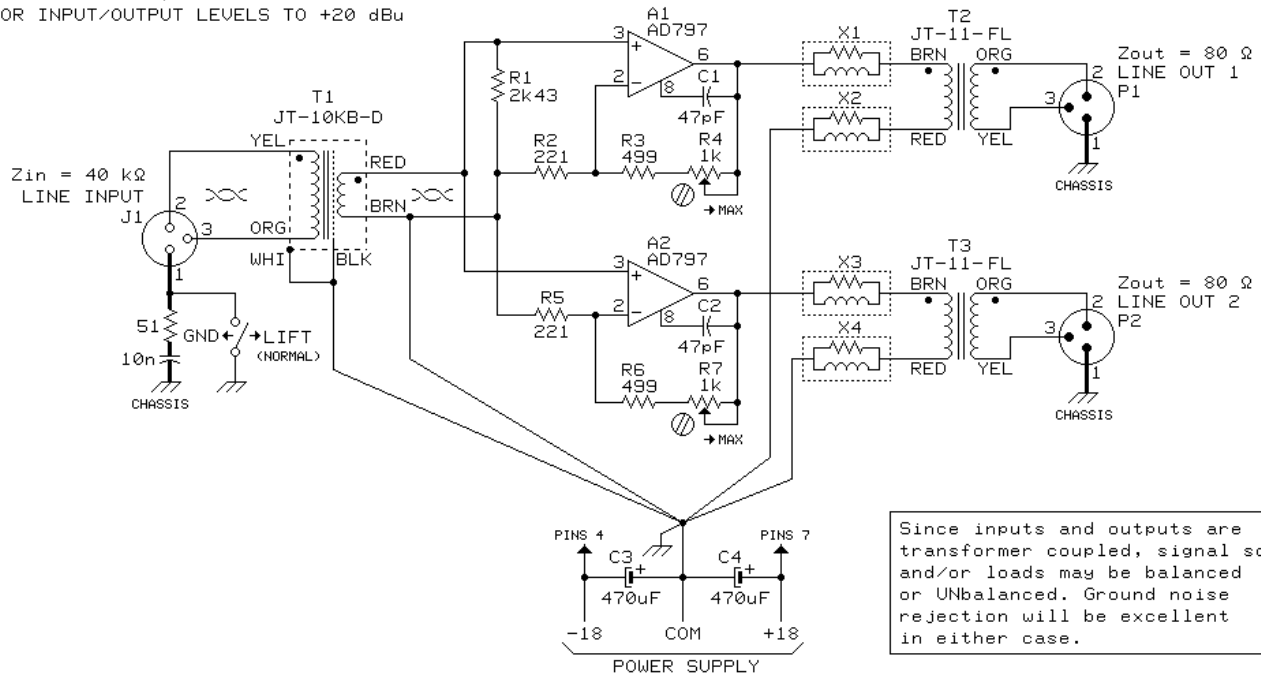
NOTES

1. ALL RESISTORS ARE ±1% 1/4w METAL FILM TYPES, ROEDERSTEIN MK2-1 OR EQUIVALENT (1k00 = 1.00k & 15r0 = 15.0)
2. ALL CAPACITORS ARE POLYPROPYLENE, POLYSTYRENE, OR NPO/C0G CERAMIC TYPES (3n9 = 3.9 nF or 3900 pF)
3. X1 IS OPTIONAL WICKMANN 13942 SERIES 90 VOLT GAS TUBE ARRESTORS RECOMMENDED TO PROTECT AGAINST LIGHTNING INDUCED TRANSIENT VOLTAGES WHICH ARE COMMON TO SYSTEMS WITH VERY LONG CABLE RUNS.
4. USE GOOD HIGH FREQUENCY CONSTRUCTION TECHNIQUES. USE OF POWER & GROUND PLANES IS HIGHLY RECOMMENDED.
5. FOR INPUT LEVELS UP TO +24 dBu, USE JT-6110K-B SHOWN AS ALTERNATE

jensen	AS029
	09/18/95
7135 HAYVENHURST AVE. VAN NUYS, CALIFORNIA 91406 (818) 374-5857	

JT-10KB-D USED IN LINE LEVEL 2-WAY "SPLITTER/ISOLATOR"

NOMINAL UNITY GAIN, ADJUSTABLE ± 3 dB WITH R4/R7
 USE FOR INPUT/OUTPUT LEVELS TO +20 dBu



Since inputs and outputs are transformer coupled, signal source and/or loads may be balanced or UNbalanced. Ground noise rejection will be excellent in either case.

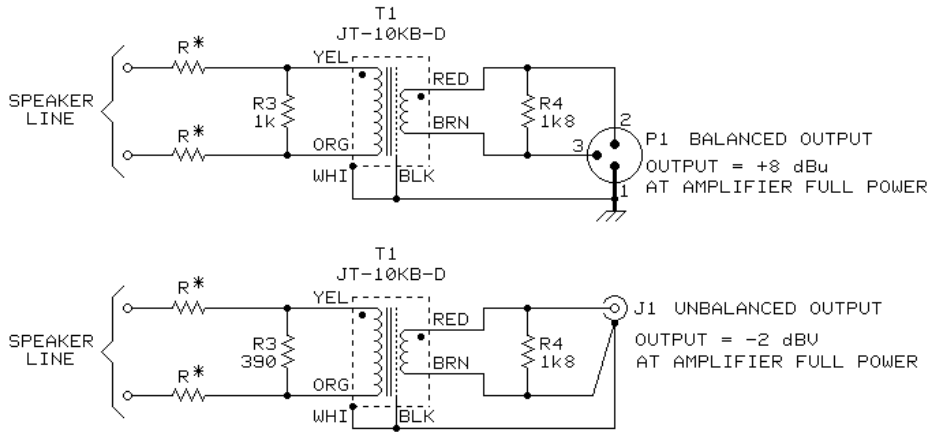
NOTES

- A1 AND A2 ARE ANALOG DEVICES AD797JN WITH SMALL FINNED HEATSINK
- X1-X4 ARE OUTPUT LOAD ISOLATORS, JENSEN JT-OLI-2 OR EQUIVALENT
- ALL RESISTORS ARE $\pm 1\%$ 1/4w METAL FILM TYPES, ROEDERSTEIN MK2-1 OR EQUIVALENT
- ALL RESISTORS IN OHMS (6k19 = 6.19k, 30r1 = 30.1)
- USE GROUNDING "STAR" CONNECTION SHOWN TO PREVENT INTERNAL GROUND "LOOPS"
- USE OF GOLD PLATED CONTACTS IN XLR CONNECTORS IS HIGHLY RECOMMENDED
- TIGHTLY TWIST LEADS AS SHOWN ∞
- KEEP ALL WIRING AS SHORT AS POSSIBLE, ESPECIALLY THAT DRAWN WITH THICK LINES
- BYPASS IC POWER WITH HIGH QUALITY 0.1uF CAPACITORS MOUNTED VERY CLOSE TO IC PINS
- GROUND PLANE CONSTRUCTION IS HIGHLY RECOMMENDED

© COPYRIGHT 1994, JENSEN TRANSFORMERS, INC.

jensen	AS041
	11/18/96
7135 HAYVENHURST AVE. VAN NUYS, CALIFORNIA 91406 (818) 374-5857	

JT-10KB-D ISOLATES AND CONVERTS SPEAKER DRIVE TO LINE LEVEL



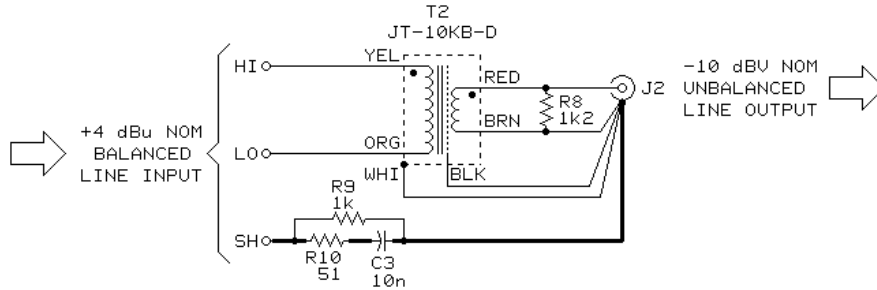
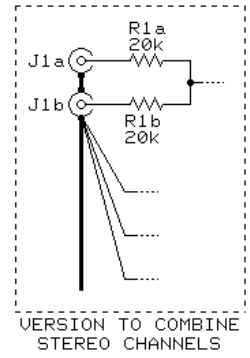
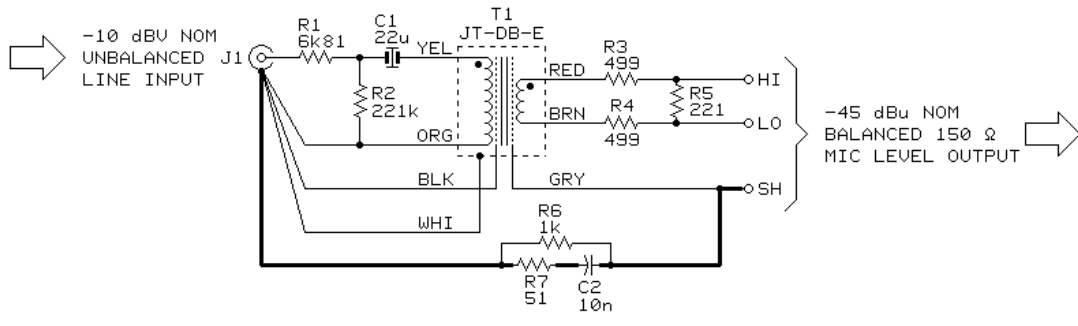
	AMPLIFIER RATED WATTS		R* VALUE
	@ 8Ω	@ 4Ω	
70V	500	1000	3.0 kΩ
	200	400	1.8 kΩ
25V	100	200	1.0 kΩ
	50	100	620 Ω
	20	40	200 Ω
	≤10	≤20	0 Ω

NOTES

1. USE BALANCED CIRCUIT FOR PRO EQUIPMENT WITH NOMINAL 0 dBu REF LEVEL;
USE UNBALANCED CIRCUIT FOR CONSUMER GEAR WITH NOMINAL -10 dBu REF LEVEL.
2. ALL RESISTORS ARE ±5% OR BETTER, 1/4 WATT TYPES.
3. CABLE CONNECTED TO P1 or J1 SHOULD BE UNDER 10 FEET TO MAINTAIN GOOD HIGH FREQUENCY RESPONSE.

jensen	AS068
	09/16/97
7135 HAYVENHURST AVE. VAN NUYS, CALIFORNIA 91406 (818) 374-5857	

JT-10KB-D & JT-DB-E PROVIDE "J-BOX" CONSUMER to STUDIO INTERFACE



NOTES

1. R1 THRU R5 ARE ±1% 1/4w METAL FILM RESISTORS, RATED IN OHMS (6k81 = 6.81 kΩ)
2. R6 THRU R10 ARE ±5% 1/4w CARBON FILM RESISTORS, RATED IN OHMS (1k2 = 1.2 kΩ)
3. C1 IS ±20%, 25 V BI-POLAR ELECTROLYTIC CAPACITOR, PANASONIC ECE-A1EN220S OR EQUIV.
4. C2 AND C3 ARE ±20%, 100 V OR HIGHER DISC CERAMIC CAPACITORS
5. WIRES SHOWN AS — SHOULD BE AS SHORT AND DIRECT AS POSSIBLE
6. RCA JACKS SHOULD BE INSULATED FROM J-BOX PANEL UNLESS BOX ELECTRICALLY "FLOATS"

© COPYRIGHT 1997, JENSEN TRANSFORMERS, INC.

jensen	AS081
	01/17/97
7135 HAYVENHURST AVE. VAN NUYS, CALIFORNIA 91406 (818) 374-5857	