

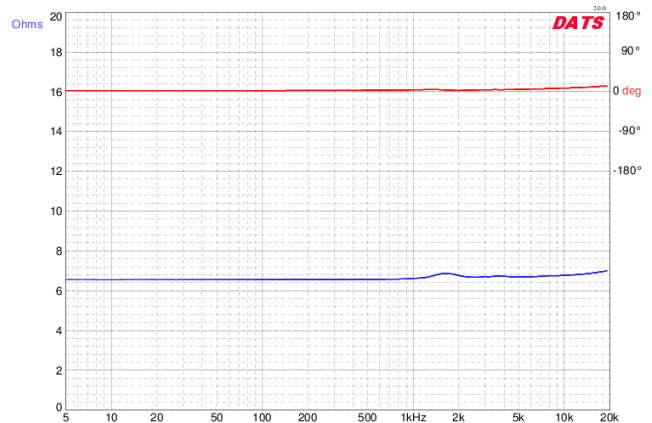
PARAMETERS

Impedance	8 ohms
Re	6.6 ohms
Le	0.15 mH @ 1 kHz
Fs	1,607 Hz
Qms	1.86
Qes	N/A
Qts	1.78
Mms	N/A
Cms	N/A
Sd	32.4 cm ²
Vd	N/A
BL	N/A
Vas	N/A
Xmax	N/A
VC Diameter	N/A
SPL	94 dB @ 1W/1m
RMS Power Handling	80 watts
Usable Frequency Range (Hz)	2,000 - 26,000 Hz

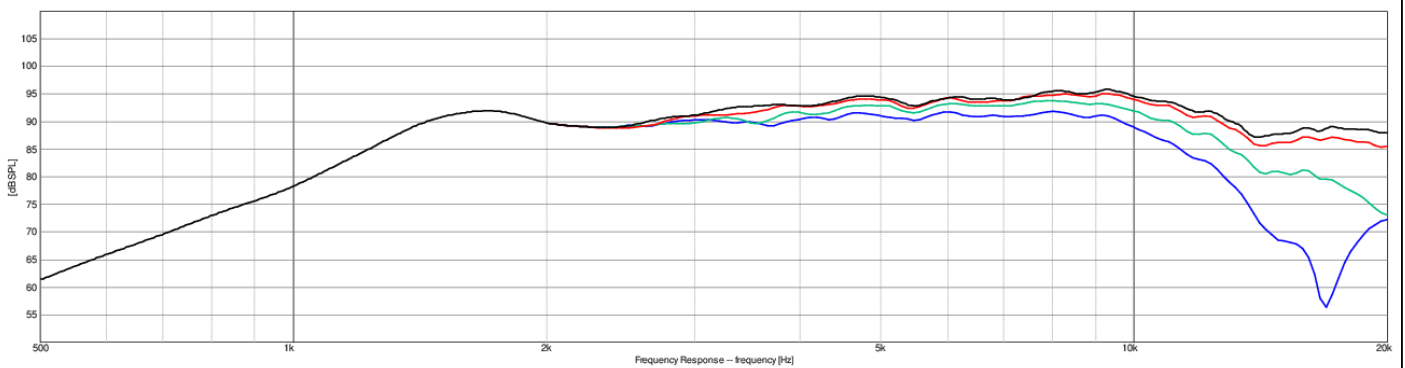
FEATURES

- Superb resolution and detail for the most discerning audiophile
- Wide horizontal and narrow vertical dispersion patterns
- Perfect for use in line arrays
- 3 kHz recommended crossover frequency at 12 dB per octave

IMPEDANCE/PHASE



FREQUENCY RESPONSE



Note: 1/24th octave smoothing - nearfield response included in graph below 450 Hz.

Black = 0°
 Red = 15°
 Green = 30°
 Blue = 45°