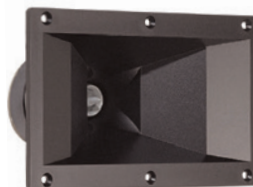


# APT SERIES SUPERTWEETERS

The APT:80S, 150S, and 200S horn flares are available separately for use with any 1" exit driver with 1 3/8" ext. thread.

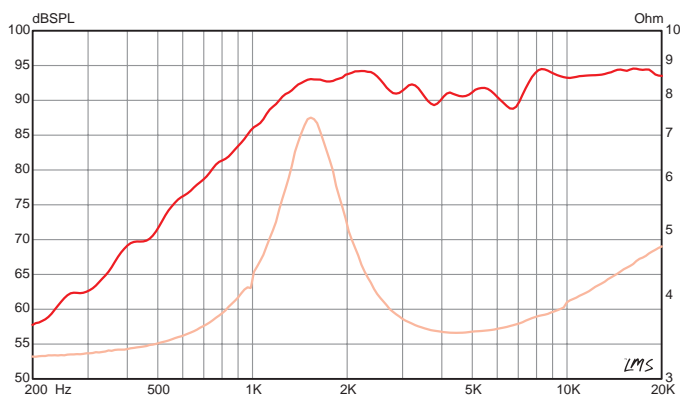


	<b>SD28</b>	<b>APT:30</b>	<b>APT:80</b>	<b>APT:150</b>	<b>APT:200</b>
<b>Description</b>	Soft dome tweeter	Horn loaded tweeter	APT:50 Driver with APT:80S Horn	APT:50 Driver with APT:150S Horn	APT:50 Driver with APT:200S Horn
<b>Horn Type</b>	N/A	Conical	Conical	Constant Directivity	Bi-Radial
<b>Throat Size</b>	N/A	1.0", 25.4 mm	1.0", 25.4 mm	1.0", 25.4 mm	1.0", 25.4 mm
<b>Dispersion</b>	60°	80° Conical	80° Conical	100 x 50	90 x 90
<b>Power Rating</b>	10 W (AES) 20 W (EIA-426B)	10 W (AES)	35 W (AES)	35 W (AES)	35 W (AES)
<b>Nominal Impedance</b>	4 Ω	8 Ω	8 Ω	8 Ω	8 Ω
<b>Minimum Impedance</b>	3.5 Ω @ 4.4 kHz	7.5 Ω @ 5 kHz	7.3 Ω @ 6 kHz	7.7 Ω @ 6 kHz	7.3 Ω @ 6.1 kHz
<b>Sensitivity</b>	92.5 dB	93.4 dB (116.5 max)	102.3 dB	102.4 dB	103 dB
<b>Resonance</b>	1.5 kHz	2.2 kHz	1.5 kHz	2.7 kHz	2.6 kHz
<b>Usable Frequency Range</b>	1.5 kHz – 20 kHz	3.5 kHz – 20 kHz	3.5 kHz – 20 kHz	3.5 kHz – 20 kHz	3.5 kHz – 20 kHz
<b>Recommended Crossover</b>	1.5 kHz / 12 dB	3.5 kHz / 12 dB	3.5 kHz / 12 dB	3.5 kHz / 12 dB	3.5 kHz / 12 dB
<b>Voice Coil Diameter</b>	1.0", 25.4 mm	0.5", 12.7 mm	1.0", 25.4 mm	1.0", 25.4 mm	1.0", 25.4 mm
<b>Voice Coil Former</b>	Aluminum	Aluminum	Kapton	Kapton	Kapton
<b>Diaphragm Material</b>	Silk	Mylar	Phenolic	Phenolic	Phenolic
<b>Magnet Composition</b>	Neodymium	Ferrite	Ferrite	Ferrite	Ferrite
<b>Width/Height/Depth</b>	1.0" height, 1.48" width 25.4 x 37.6 mm	2.61 x 2.61 x 1.78 in., 66.2 x 66.2 x 45.2 mm	3.40 x 3.40 x 3.70 in., 86.4 x 86.4 x 94.0 mm	7.60 x 4.50 x 5.10 in., 193.0 x 114.3 x 129.5 mm	5.90 x 6.00 x 6.30 in., 149.9 x 152.4 x 160.0 mm
<b>Cut-out</b>	Rear mounting hole diameter 1 x M4 x 0.7	2.31 x 2.31 in., 59 x 59 mm	3.15 x 3.15 in., 80 x 80 mm	6.7 x 3.4 in., 170 x 86 mm	4.3 x 4.3 in., 109 x 109 mm
<b>Weight</b>	0.1 lbs., 0.05 kg	0.4 lb., 0.18 kg	1.80 lb., 0.82 kg	1.90 lb., 0.86 kg	2.50 lb., 1.13 kg
<b>Horn Material</b>	N/A	ABS	ABS	ABS	ABS

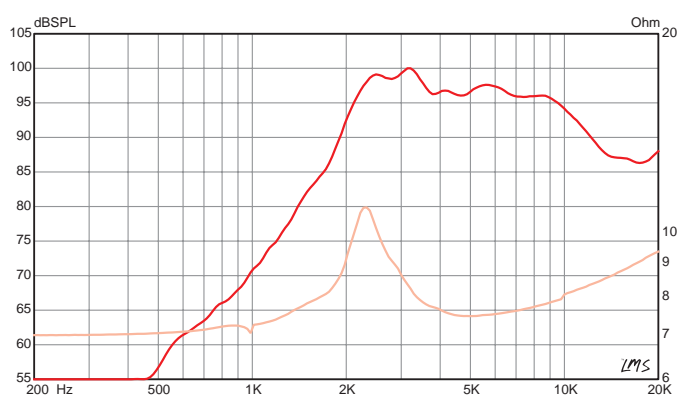
# APT SERIES SUPERTWEETERS

Frequency Response and Impedance curves\*

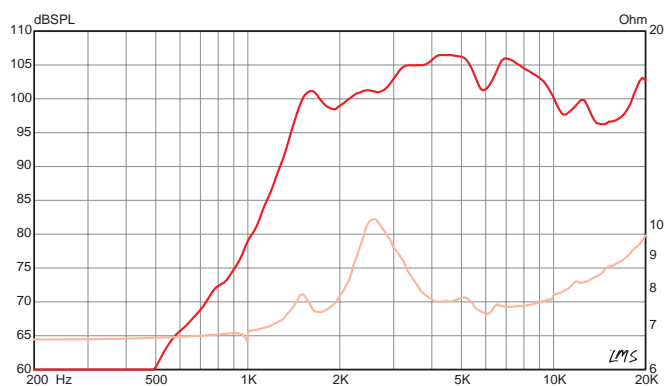
## SD28



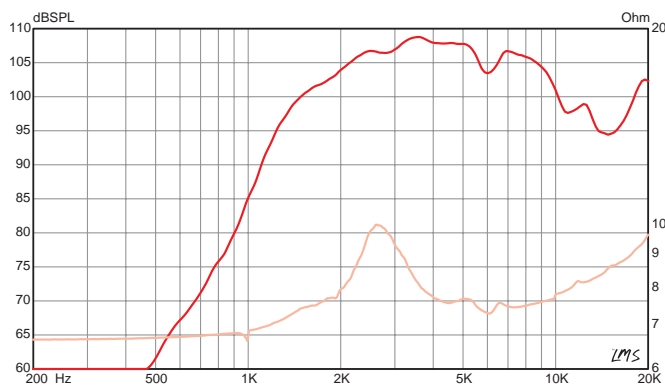
## APT:30



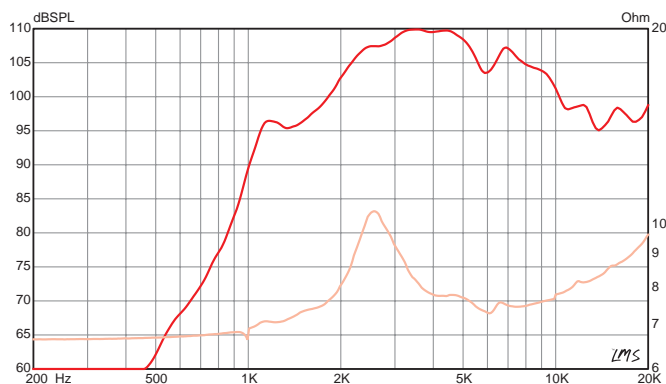
## APT:80



## APT:150



## APT:200



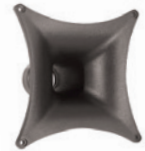
\* Multiple units exceed published ratings evaluated under EIA 426A specification while tested in a free-air, non-temperature-controlled environment. Multiple compression drivers exceeded published ratings evaluated under EIA-426A or AES specification while mounted on Eminence's H290, H290S, or H2EA horn in a non-temperature-controlled environment.

The average output across the usable frequency range when applying 1W/1m into the nominal impedance. i.e: 2.83V/8Ω, 4V/16Ω. Eminence response curves are measured under the following conditions: All speakers are tested at 1W/1m using a variety of test set-ups for the appropriate impedance | LMS using 0.25" supplied microphone (software calibrated) mounted 1m from wall/baffle | 2 ft. x 2 ft. baffle is built into the wall with the speaker mounted flush against a steel ring for minimum diffraction | Yamaha P3500S amplifier | 2700 cu. ft. chamber with fiberglass on all six surfaces (three with custom-made wedges). Compression drivers were tested using a 2ft x 2ft baffle built into the wall with horn front mounted.

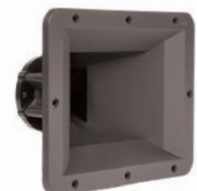
Prices, specifications and product cosmetics are subject to change without notice.

# HORN FLARES AND WAVEGUIDES

The APT:80S, 150S, and 200S horn flares on page 1 are available separately for use with any 1" exit driver with 1 3/8" ext. thread.



	<b>WG 10</b>	<b>LA-WG 10</b>	<b>LA-WG 14</b>	<b>BH 410</b>
<b>Type</b>	Waveguide	Line Array Waveguide	Line Array Waveguide	Exponential
<b>Throat Size</b>	1.0", 25.4 mm	1.0", 25.4 mm	1.4", 35.6 mm	1.0", 25.4 mm
<b>Attachment Method</b>	Bolt-on	Bolt-on	Bolt-on	Screw-on
<b>Dispersion</b>	70 x 60	140 X 15	140 x 15	60 x 60
<b>Recommended Crossover</b>	1.4 kHz	1.8 kHz	1 kHz	1.2 kHz
<b>Width/Height/Depth</b>	11.6" x 8.6" x 4.5", 295 x 218 x 114 mm	3.5" x 4.4" x 4.4", 89 x 112 x 112 mm	5.2" x 6.4" x 7.1", 131 x 163 x 181 mm	5.59" x 5.59" x 4.38", 142 x 142 x 111.3 mm
<b>Cut-out</b>	10.4 x 7.4", 264 x 188 mm	1 x 4", 25.4 x 102 mm	1 x 6", 25.4 x 152.4 mm	3.56 x 3.56", 90.4 x 90.4 mm
<b>Weight</b>	1.10 lb., 0.50 kg	0.96 lb., 0.43 kg	2.5 lb., 1.13 kg	0.35 lb., 0.16 kg
<b>Material</b>	ABS	Aluminum	Aluminum	ABS



	<b>H290S</b>	<b>H14EA</b>	<b>H2EA</b>	<b>SST1</b>
<b>Type</b>	Exponential	Exponential	Exponential	Constant Directivity
<b>Throat Size</b>	1.0", 25.4 mm	1.4", 35.6 mm	2.0", 50.8 mm	1.0", 25.4 mm
<b>Attachment Method</b>	Screw-on or Bolt-on (H290B)	Bolt-on	Bolt-on	Bolt-on
<b>Dispersion</b>	90 x 40	60 X 40	60 x 40	90 x 40
<b>Recommended Crossover</b>	1.0 kHz	600 Hz	700 Hz	1.0 kHz
<b>Width/Height/Depth</b>	11.7" x 6.6" x 6.6", 297.2 x 167.6 x 167.6 mm	12.60" x 7.50" x 7.90", 320 x 190.5 x 200.7 mm	12.4" x 7.3" x 6.1", 315 x 185.4 x 154.9 mm	9.8" x 7.7" x 5.2", 249 x 196 x 132 mm
<b>Cut-out</b>	9.7 x 4.9", 246 x 124 mm	11.3 x 6.1", 287 x 155 mm	11.3 x 6.3", 287 x 160 mm	8.5" x 6.4", 216 x 163 mm
<b>Weight</b>	1.10 lb., 0.50 kg	4.80 lb., 2.18 kg	4.90 lb., 2.22 kg	1.80 lb., 0.82 kg
<b>Material</b>	ABS	Aluminum	Aluminum	ABS

# ADAPTERS, HARDWARE AND COMPATIBILITY CHART



## HA1-14

Aluminum adapter allows you to pair a 1" bolt-on horn or driver with a 1.4" bolt-on device.



## HA14-2

Use this aluminum adapter to pair a 1.4" bolt-on horn or driver with a 2" bolt-on device.



## B2S-A

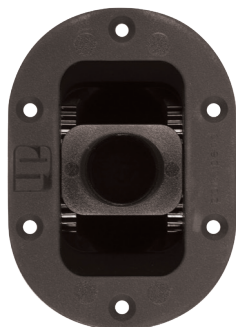
Aluminum adapter converts bolt-on driver to accept a screw-on horn. 2x 1/4-20 or 3x M6 driver to 1 3/8" 18 thread horn.



## S2B-A

Aluminum adapter converts screw-on driver to accept a bolt-on horn. 1 3/8" 18 ext. driver to 2x 1/4-20 or 3x M6 horn.

## CABINET HARDWARE



## TOP HAT-CH

Adjustable-angle speaker stand receptacle for loudspeaker boxes. Vertical angle can be adjusted in 4° increments to +/- 18°. Fits SPS56B and most other standard speaker stands. Internal Ø 36mm. Max weight 55.1 lbs., 25 kg. Black polyamide. Patent pending.

## DRIVER AND HORN COMPATIBILITY

DRIVER	HORN OPTION	DRIVER	HORN OPTION	
N314T-8	H14EA	ASD:1001S NSD:2005S	APT:150S*	
	LA-WG14		APT200S	
N320T-8 PSD:3006	H2EA		H290S	
APT:50	APT:80S		BH410	
	APT:150S		SST1 **	
	APT:200S		WG-10 **	
	BH410		LA-WG10 **	
	H290S		APT:150S *** (Bracing recommended with PSD drivers)	
PSD:2002S PSD:2013S	SST1 **		N151M-8 NSD:2005B PSD:2002B PSD:2013B	APT200S *** (Bracing recommended with PSD drivers)
	WG-10 **		H290B	
	LA-WG10 **	SST1		
	APT:200S*	WG10		
	H290S*	LA-WG10		

\* Driver bracing recommended \*\* S2B Adapter required \*\*\* B2S Adapter required

## ISO-5 5" ISOLATION BOX



The ISO-5 isolation box provides a quick and cost-effective solution for chambering a 5" open-frame speaker. The molded ABS construction offers a durable and lightweight option for eliminating interference from larger woofers mounted in the same enclosure. Ideal for pro audio, MI, installed sound, and car audio applications.

MATERIAL	ABS
WEIGHT	0.2 lbs, 0.09 kg
DEPTH	3.25", 82.6 mm
MAJOR DIAMETER	5.31", 135.0 mm
FLAT TO FLAT DIAMETER	4.80", 121.9 mm
CUT-OUT	4.56", 115.8 mm

VISIT [EMINENCE.COM](http://EMINENCE.COM) TO LEARN MORE