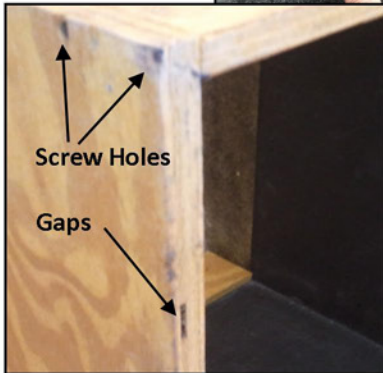
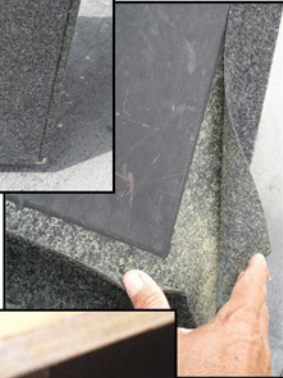


“Reface the Case” ... or: “How we removed rat fur and slicked up a road case with DuraTex”.



Recently, I was discussing **DuraTex Speaker Cabinet Texture Coating** with Dan Fowlks from Reliable Hardware in California. They offered to put a link on their website if we'd showcase their hardware along with the **DuraTex**. Sounded fun, so I bought an old road case to work with and Dan sent me replacement hardware to use in slicking it up. Can we turn a sow's ear into a silk purse??

The first step was to remove all the old rat fur. It was held in place by contact cement sprayed to the back of the fur and also to the plywood underneath. The fur came off quite easily but left a glue residue. The underlying plywood seemed to be BC grade, not the Birch Ply used in high quality cases or speaker cabinets. There are gaps in the end grain and the surface of the plywood is a rough.

*(Road cases covered with carpet are not finished the same way as a nicely coated road case would be. Carpeted cases use cheaper plywood, they don't fill or sand the imperfections and carpet is absolutely NOT watertight. Any rain or moisture can go right through the carpet and start to warp the plywood, weakening the structure of the road case. **DuraTex** will protect against rain and moisture!!!)*

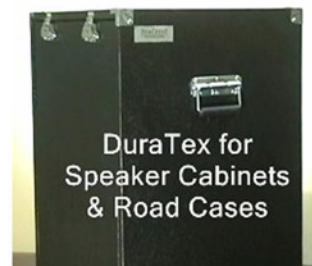
The second step was to fill the holes in the end grain, dents in the corners and recesses caused by screws with spackle compound. Once filled and dry, the spackle was sanded lightly. (As an experiment, I didn't sand off all the old glue. I simply went over the entire surface with 80 grit paper to remove any loose crud and bits of remaining rat fur (carpet).

The third step was a light sanding to smooth out the spackle and wiping with a tack rag to remove all sanding residue. The case and both doors were then ready for the DuraTex.



The fourth step was the application of **DuraTex**. For this project, I used the Roller Grade with our textured roller as it will help to cover the imperfections in the cheap plywood. I applied it quite heavily to create a deep texture for 2 reasons... it hides the holes and grain better AND it creates a tougher finish. Road Cases are mobile and have a way of bumping into things. **DuraTex** protects against bumps and bruises.

The final step was replacing the old hardware with the shiny new hardware supplied by Reliable Hardware in California. This hardware was much nicer than the original and now we have a case to be proud of.



Thanks to our friends at Reliable Hardware. Reach them at www.ReliableHardware.com 800.757.5270

This case is protected from the elements with only 1/2 gallon of DuraTex. It's Beautiful, Professional and ready for years of service.

Look for DuraTex at www.acrytech.com