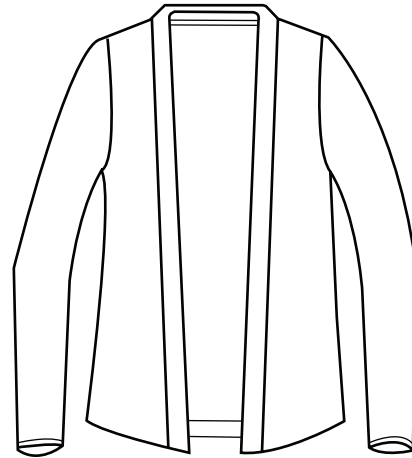


## BG4705 Ladies' Flyaway



- 95% Soft combed ringspun cotton/5% spandex
- Superfine 6.5 ounce jersey 1 X 1 rib knit
- Hemmed sleeves & bottom
- Sizes: XS-4XL
- Classic fit



Add a touch of class with this trendy new flyaway! This stylish item is made with 95% combed ring spun cotton blended with 5% spandex. It has 1 x 1 rib knit, hemmed cuffs and bottom. Perfect for business or casualwear, this product is available in multiple colors and comes in sizes ranging from XS to 4XL. Pull off a great look today!



### LADIES' SIZES

	XS (2)	S (4-6)	M (8-10)	L (12-14)	XL (16-18)	2XL (20-22)	3XL (24-26)	4XL (28-30)	5XL (32-34)
BUST	30-31	32-33	34-35	36-38	40-42	44-46	48-50	52-54	56-58
SLEEVE	31	31.5	32	32.5	33	33.5	34	34.5	—
BOTTOM	31-32	33-34	35-36	37-39	41-43	45-47	49-51	53-55	—