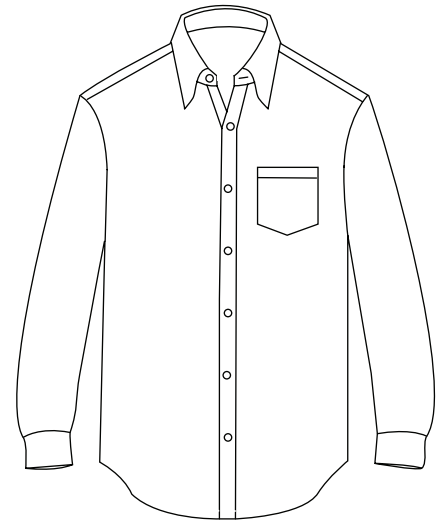




- 60/40 Cotton/poly blend
- Easy care
- Stain release
- Button down collar
- Patch pocket
- Adjustable cuffs
- Center pleated back
- Pearl white buttons
- Unisex sizes



Perfect for school uniforms and formalwear, this youth long-sleeve oxford shirt is an essential addition to your child's wardrobe. Available in white or blue and in youth sizes from S to XL, this eye-catching and comfortable piece of apparel is made from a 60% cotton/40% polyester blend and features a button-down collar, a center pleated back, a patch pocket, adjustable cuffs and pearl white buttons. It is stain release



YOUTH SIZES

XS (4)	S (6-8)	M (10-12)	L (14-16)	XL (18-20)
--------	---------	-----------	-----------	------------