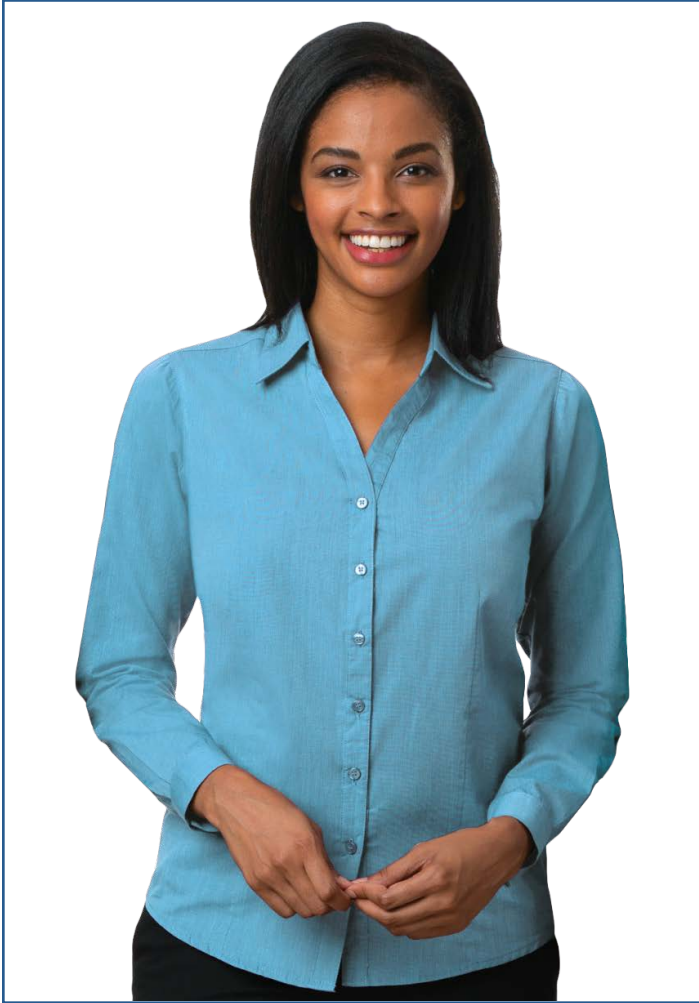
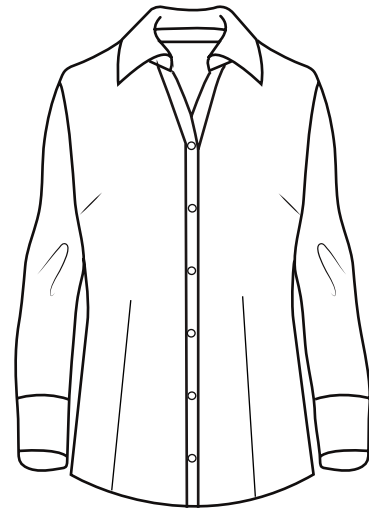


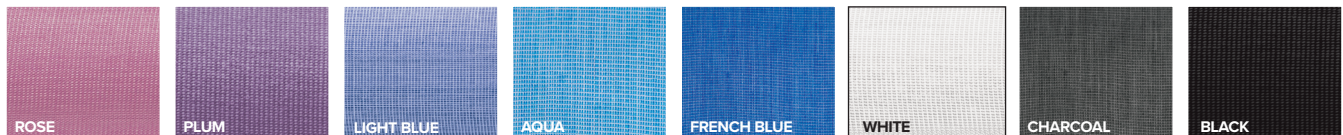
BG6215 Ladies' L/S Crossweave Shirt



- 55/45 Cotton/poly blend
- Easy care
- 3 ounces
- Wrinkle resistant
- Subtle 2-tone heathered crossweaves
- Spread collar
- Matching pearlized buttons
- Y-shaped placket
- No pocket
- Front & back darts
- Sizes: XS-4XL
- Feminine fit



Weave together a great new item with this ladies heathered cross-weave pocketless shirt. Made of a 55% cotton/45% polyester blend, this 3 oz. dress shirt features a button-down collar, adjustable cuffs and matching buttons. Available in sizes XS to 4XL, this shirt is wrinkle resistant and has a Y-shaped placket to show off an eye-catching style. Make a bold boardroom impression today!



LADIES' SIZES

	XS (2)	S (4-6)	M (8-10)	L (12-14)	XL (16-18)	2XL (20-22)	3XL (24-26)	4XL (28-30)	5XL (32-34)
BUST	30-31	32-33	34-35	36-38	40-42	44-46	48-50	52-54	56-58
SLEEVE	31	31.5	32	32.5	33	33.5	34	34.5	—
BOTTOM	31-32	33-34	35-36	37-39	41-43	45-47	49-51	53-55	—