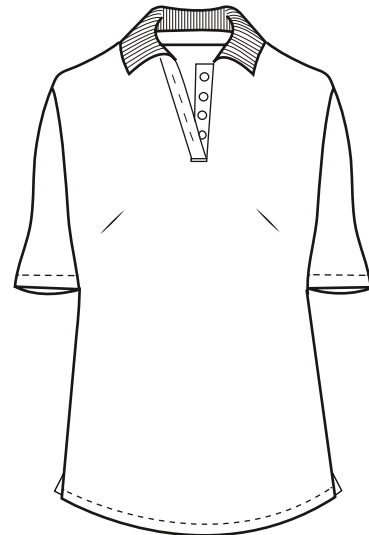


## BG6231 Ladies' Ultra-Lux Polo



- 65/35 poly/rayon jersey knit
- Wrinkle resist
- Matching pearlized buttons
- Rib knit collar
- 5.6 oz.
- 4 button placket
- Hemmed sleeves
- Side vents
- Tag free label
- Sizes XS-4XL
- Classic fit



Touch it, feel it. You won't believe it! This 65% poly/ 35% rayon blended polo is one of the softest most comfortable shirts you will ever wear. Matching pearlized buttons, rib knit collar, hemmed sleeves, side vents. Tag free label. Classic fit.



### LADIES' SIZES

|        | XS (2) | S (4-6) | M (8-10) | L (12-14) | XL (16-18) | 2XL (20-22) | 3XL (24-26) | 4XL (28-30) | 5XL (32-34) |
|--------|--------|---------|----------|-----------|------------|-------------|-------------|-------------|-------------|
| BUST   | 30-31  | 32-33   | 34-35    | 36-38     | 40-42      | 44-46       | 48-50       | 52-54       | 56-58       |
| SLEEVE | 31     | 31.5    | 32       | 32.5      | 33         | 33.5        | 34          | 34.5        | —           |
| BOTTOM | 31-32  | 33-34   | 35-36    | 37-39     | 41-43      | 45-47       | 49-51       | 53-55       | —           |