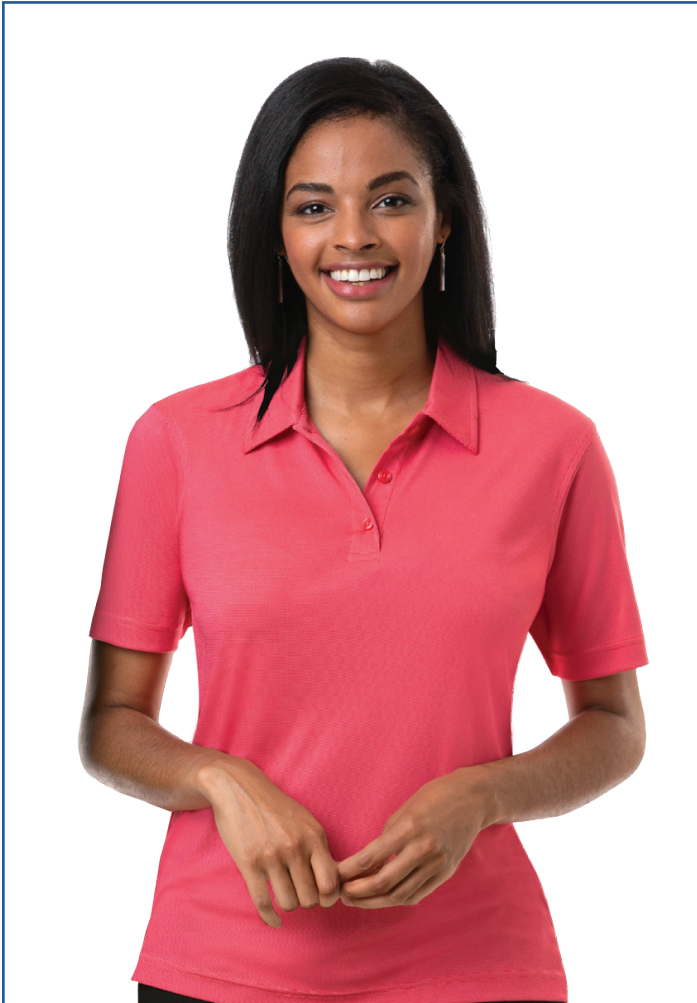
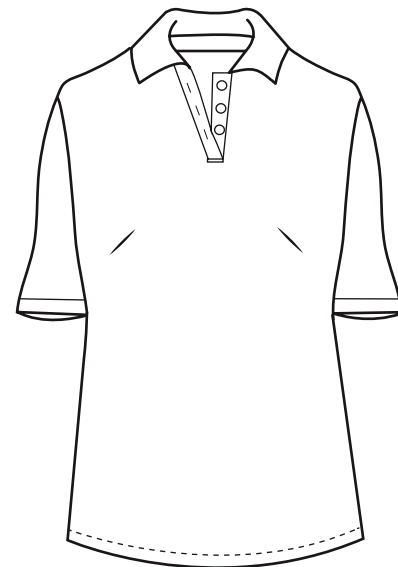


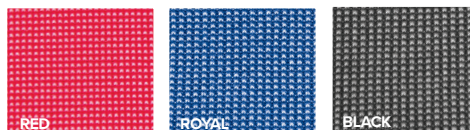
BG6232 Ladies S/S Nailhead Polo



- 100% polyester interlock knit
- Moisture wicking
- 5 oz.
- Matching buttons
- Self-fabric collar
- Hemmed sleeves
- Tag free label
- Sizes XS-4XL
- Classic fit



A special jacquard weave creates a nailhead effect on this moisture wicking polo. Perfect for the boardroom, golf course and everywhere in between, our moisture wicking Nailhead Polo insures comfort and professional styling. 5.oz 100% polyester interlock knit. Matching buttons. Self-fabric collar for modern styling. Tag free label. Hemmed sleeves. Ladies' classic fit.



LADIES' SIZES

	XS (2)	S (4-6)	M (8-10)	L (12-14)	XL (16-18)	2XL (20-22)	3XL (24-26)	4XL (28-30)	5XL (32-34)
BUST	30-31	32-33	34-35	36-38	40-42	44-46	48-50	52-54	56-58
SLEEVE	31	31.5	32	32.5	33	33.5	34	34.5	—
BOTTOM	31-32	33-34	35-36	37-39	41-43	45-47	49-51	53-55	—