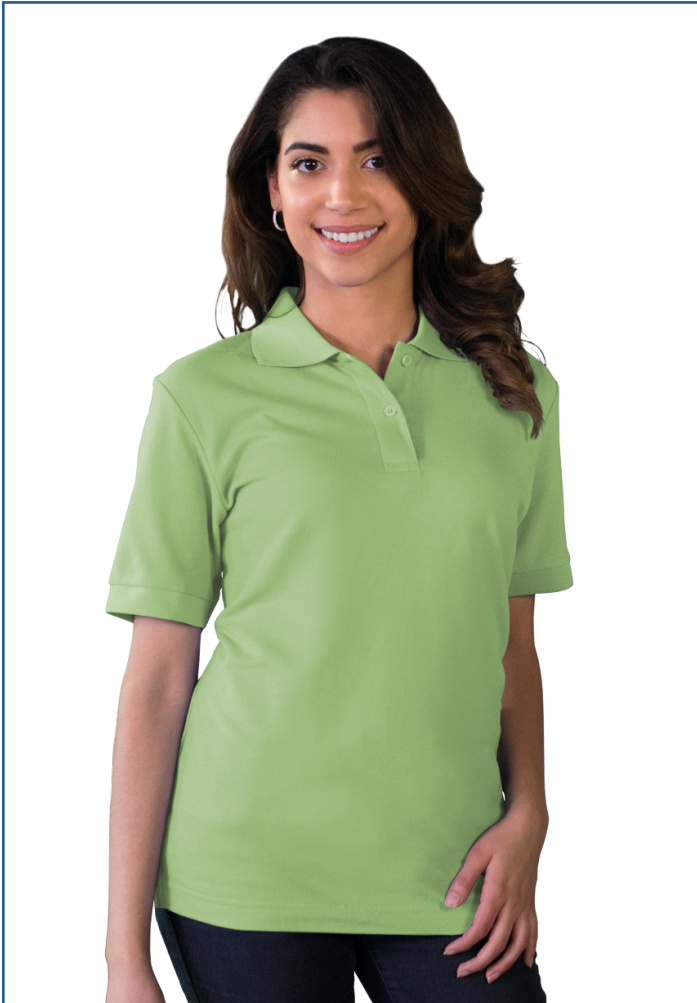
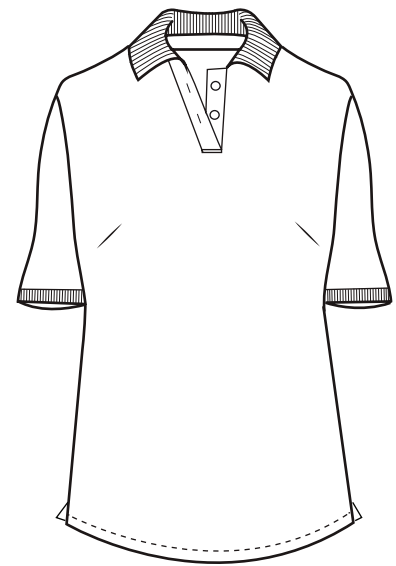


## BG6500 Ladies' Soft Touch S/S Pique Polo



- 65/35 poly/cotton pique
- Easy care
- 5.5 ounce pique
- Wrinkle resistant
- Rib knit collar & cuffs
- Curl free collar
- Matching buttons
- Side vents
- Taped neck & shoulders
- Tag free label
- 2 button placket
- Sizes: S-4XL
- Classic fit



No wardrobe is complete without this 5.5 oz. ladies short sleeve pique polo! Great for business or performance purposes, this trendy item is made from a 65/35 polyester/cotton blend that is wrinkle resistant. It features a rib-knit collar, banded sleeves, a straight bottom, side vents, taped neck and shoulder and a two-button placket with matching buttons. This breathable product is available in an array of colors and in sizes ranging from S to 4XL. Size XS is available in RED, LIGHT BLUE, TURQUOISE, ROYAL, NAVY, WHITE, GRAPHITE and BLACK.



XS: BG6500 ladies' XS available in these colors only.

### LADIES' SIZES

	XS (2)	S (4-6)	M (8-10)	L (12-14)	XL (16-18)	2XL (20-22)	3XL (24-26)	4XL (28-30)	5XL (32-34)
BUST	30-31	32-33	34-35	36-38	40-42	44-46	48-50	52-54	56-58
SLEEVE	31	31.5	32	32.5	33	33.5	34	34.5	—
BOTTOM	31-32	33-34	35-36	37-39	41-43	45-47	49-51	53-55	—