

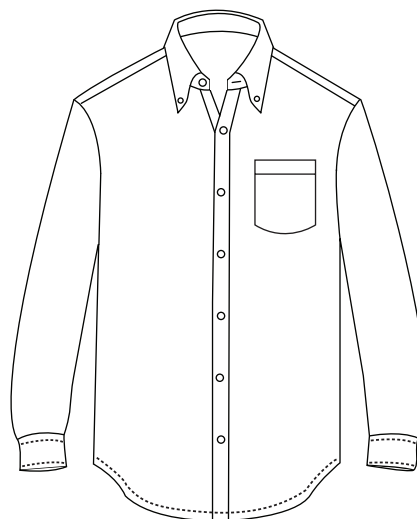
# Blue Generation®

CLOTHES YOU WANT TO WEAR, NOT HAVE TO WEAR

## BG7210 Men's L/S Value Poplin Shirt



- 65/35 poly/cotton blend
- Easy care
- Wrinkle resistant
- 3 oz. lightweight poplin
- Matching buttons
- Double back yoke
- Straight bottom
- 2 side back pleats
- Side vents
- Button down collar
- Patch pocket
- Sizes: S-6XL
- Classic fit



Essential attire for the office and beyond, this men's long-sleeve easy-care poplin will show off serious style! Made from a blend of 65% polyester/35% cotton, this eye-catching, unprinted item features a button-down collar, a double-back yoke, two side back pleats, a patch pocket and adjustable cuffs. It has a classic fit that will look great on anybody, and it is available in several colors (royal, hunter, burgundy, white, maize, light blue) and sizes (S-6XL).



\*\*White fabric slightly heavier.

### MEN'S/ADULT SIZES

	XXS	XS	S	M	L	XL	2XL	3XL	4XL	5XL	6XL	7XL	8XL	9XL-10XL
NECK	13.5	14	14-14.5	15-15.5	16-16.5	17-17.5	18-18.5	19-19.5	19.5-20	20-20.5	20.5-21	21	21.5	22.5
CHEST	28-29	30-32	34-36	38-40	42-44	46-48	50-52	54-56	58-60	62-64	66-67	68-69	70-71	74-75
SLEEVE	30.5-31	31.5-32	32.5-33	33.5-34	34.5-35	35.5-36	36.5-37	37.5-38	37.5-38	37.5-38	37.5-38	37.5-38	37.5-38	37.5-38
SLEEVE (TALL)	—	—	—	—	36.5-37	37.5-38	38.5-39	39.5-40	—	—	—	—	—	—