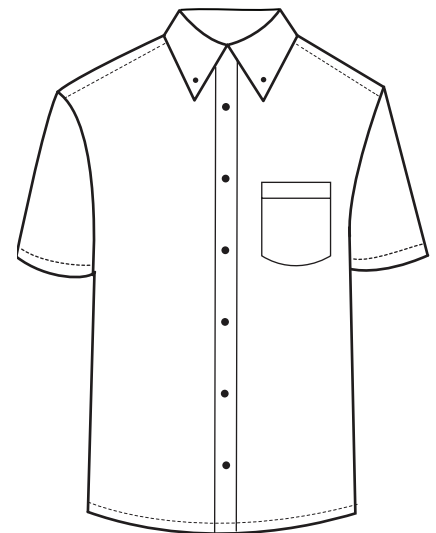


## BG7266S Men's S/S Superblend Poplin Shirt



- 65/35 poly/cotton poplin blend
- Easy care
- Stain release
- Wrinkle resistant
- Lightweight 5.5 ozs.
- 2 side back pleats
- Double back yoke
- Button down collar
- Patch pocket
- Bone buttons
- Hemmed sleeves
- Sizes: S-6XL
- Classic fit



Don't short shrift your wardrobe! This men's short-sleeve easy-care poplin shirt is sure to make a lasting impression. Made of a 65% polyester/35% cotton blend, this lightweight 5.5 oz. shirt is wrinkle/crease resistant and has stain-release and color-lock technology as well. It also has matching buttons, hemmed sleeves, a double-back yoke, a button-down collar, two side back pleats and a patch pocket. Available unimprinted only, this product is available in several colors and sizes.



### MEN'S/ADULT SIZES

	XXS	XS	S	M	L	XL	2XL	3XL	4XL	5XL	6XL	7XL	8XL	9XL-10XL
NECK	13.5	14	14-14.5	15-15.5	16-16.5	17-17.5	18-18.5	19-19.5	19.5-20	20-20.5	20.5-21	21	21.5	22.5
CHEST	28-29	30-32	34-36	38-40	42-44	46-48	50-52	54-56	58-60	62-64	66-67	68-69	70-71	74-75
SLEEVE	30.5-31	31.5-32	32.5-33	33.5-34	34.5-35	35.5-36	36.5-37	37.5-38	37.5-38	37.5-38	37.5-38	37.5-38	37.5-38	37.5-38
SLEEVE (TALL)	—	—	—	—	36.5-37	37.5-38	38.5-39	39.5-40	—	—	—	—	—	—