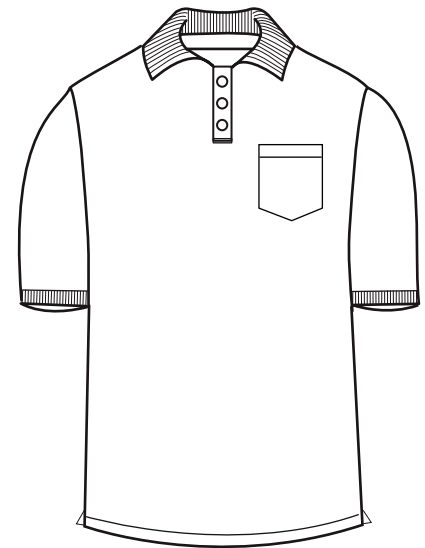


BG7501 Adult Soft Touch S/S Pocket Polo



- 65/35 poly/cotton blend
- Easy care
- 5.5 ounce pique
- Wrinkle resistant
- Rib knit collar & cuffs
- Curl free collar
- Matching buttons
- Side vents
- Taped neck & shoulders
- Tag free label
- Sizes: S-6XL
- Classic fit



Let us pique your interest with this adult short-sleeve pique polo with pocket! Made from a blend of polyester (65%) and cotton (35%), this easy-care shirt is lightweight at just 5.5 oz. and is wrinkle resistant. It features a rib-knit collar, banded sleeves, a straight bottom, side vents, a taped neck and shoulders, matching buttons and color-lock technology. This breathable mesh item comes in several colors and sizes. Make a fashion-forward decision today!



MEN'S/ADULT SIZES

	XXS	XS	S	M	L	XL	2XL	3XL	4XL	5XL	6XL	7XL	8XL	9XL-10XL
NECK	13.5	14	14-14.5	15-15.5	16-16.5	17-17.5	18-18.5	19-19.5	19.5-20	20-20.5	20.5-21	21	21.5	22.5
CHEST	28-29	30-32	34-36	38-40	42-44	46-48	50-52	54-56	58-60	62-64	66-67	68-69	70-71	74-75
SLEEVE	30.5-31	31.5-32	32.5-33	33.5-34	34.5-35	35.5-36	36.5-37	37.5-38	37.5-38	37.5-38	37.5-38	37.5-38	37.5-38	37.5-38
SLEEVE (TALL)	—	—	—	—	36.5-37	37.5-38	38.5-39	39.5-40	—	—	—	—	—	—