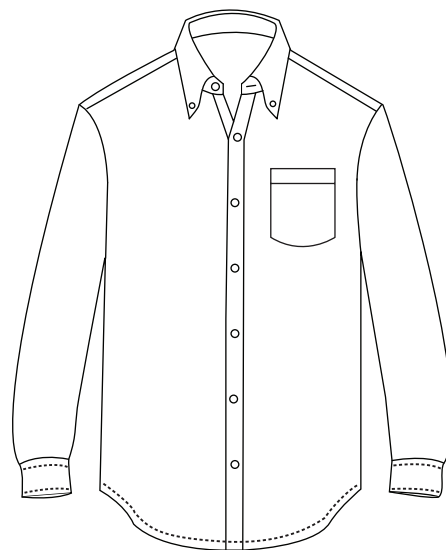
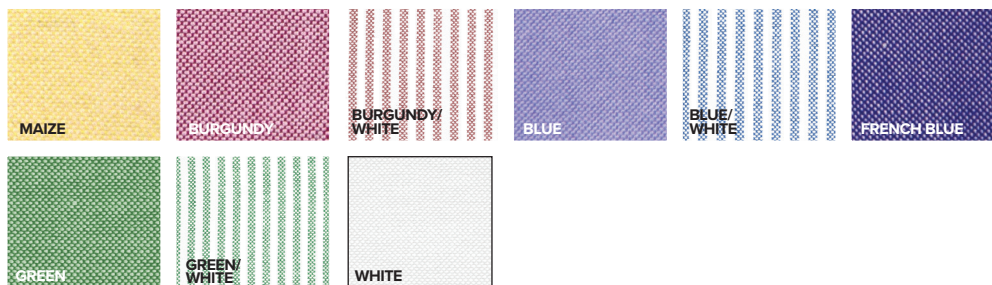




- 60/40 Cotton/poly blend
- Easy care
- Stain release
- Wrinkle resistant
- 6 ounce
- Button down collar
- Pearl white buttons
- Patch pocket
- Center pleated back
- Sizes: S-5XL
- Classic fit



Dress for success at the office and beyond with this men's long-sleeve oxford shirt. This stylish shirt is made from a 60% cotton/40% polyester blend, is available in several colors and comes in sizes from S-5XL (Talls LT-3XLT). It features a button-down collar, a center pleated back, a patch pocket, adjustable cuffs and pearl white buttons. It is wrinkle resistant and has stain-release technology.



MEN'S/ADULT SIZES

	XXS	XS	S	M	L	XL	2XL	3XL	4XL	5XL	6XL	7XL	8XL	9XL-10XL
NECK	13.5	14	14-14.5	15-15.5	16-16.5	17-17.5	18-18.5	19-19.5	19.5-20	20-20.5	20.5-21	21	21.5	22.5
CHEST	28-29	30-32	34-36	38-40	42-44	46-48	50-52	54-56	58-60	62-64	66-67	68-69	70-71	74-75
SLEEVE	30.5-31	31.5-32	32.5-33	33.5-34	34.5-35	35.5-36	36.5-37	37.5-38	37.5-38	37.5-38	37.5-38	37.5-38	37.5-38	37.5-38
SLEEVE (TALL)	—	—	—	—	36.5-37	37.5-38	38.5-39	39.5-40	—	—	—	—	—	—