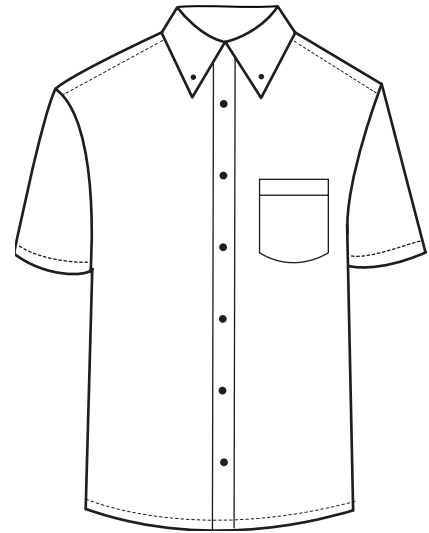


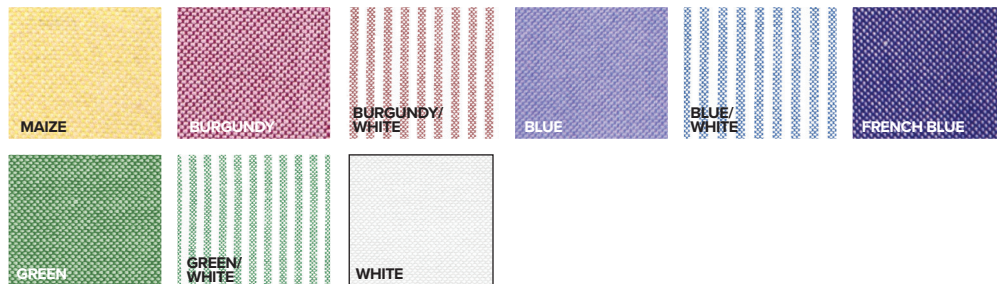
BG8214S Men's S/S Oxford Shirt



- 60/40 Cotton/poly blend
- Easy care
- Stain release
- Wrinkle resistant
- 6 ounce
- Button down collar
- Pearl white buttons
- Patch pocket
- Center pleated back
- Sizes: S-5XL
- Classic fit



Make an easy wardrobe addition that will get plenty of use with this easy-care short-sleeve oxford dress shirt! This eye-catching item is made from a 60% cotton/40% polyester blend and features a button-down collar, a center pleated back, a patch pocket, hemmed cuffs and pearl white buttons. It has a classic-fit cut and is wrinkle resistant. This product comes in several striped and solid color schemes and in sizes from S to 5XL.



MEN'S/ADULT SIZES

	XXS	XS	S	M	L	XL	2XL	3XL	4XL	5XL	6XL	7XL	8XL	9XL-10XL
NECK	13.5	14	14-14.5	15-15.5	16-16.5	17-17.5	18-18.5	19-19.5	19.5-20	20-20.5	20.5-21	21	21.5	22.5
CHEST	28-29	30-32	34-36	38-40	42-44	46-48	50-52	54-56	58-60	62-64	66-67	68-69	70-71	74-75
SLEEVE	30.5-31	31.5-32	32.5-33	33.5-34	34.5-35	35.5-36	36.5-37	37.5-38	37.5-38	37.5-38	37.5-38	37.5-38	37.5-38	37.5-38
SLEEVE (TALL)	—	—	—	—	36.5-37	37.5-38	38.5-39	39.5-40	—	—	—	—	—	—