



FlowXtreme PRO

FlowXtreme Pro Filter System Manual



VER.0318

NE4500
NE4501
NE4502
NE4503
NE4504

A. Safety Warnings

Read all Warnings and Cautions noted below. Failure to do so could result in serious or fatal injury.

- Prior to installation of this unit, carefully read and adhere to all CAUTION, ATTENTION, and ADVICE notices located throughout this manual. Failure to comply with these instructions can cause serious injury, death, or damage to the unit.
- RISK OF SUCTION ENTRAPMENT HAZARD, WHICH, IF NOT AVOIDED CAN RESULT IN SERIOUS INJURY OR DEATH. Do not block pump suction at the pump or in the pool as this can cause severe injury or death.
- Electrical wiring MUST be installed by trained professional and adhere to local code and regulations.
- Avoid electric shock. DO NOT USE power extension cords.
- Connect ONLY to a Ground-Fault Circuit Interrupter (GFCI) power outlet. Consult a qualified professional electrician for safe and proper installation of a qualified electrical outlet.
- Incorrectly installed equipment may fail, causing severe injuries or damage to the pump-filter system.
- Never submerge the filter and/or pump in water.
- Never place the pump or filter in your pool.
- Trapped air in the pump-filter system may cause the TANK COVER to be blown off which can result in death, serious injury, or damage to the pump-filter system. Ensure all air is out of system before operating.
- Never change the 7 Position Multi-Port Valve while the system is operating.
- ALWAYS unplug the system before changing the control valve.
- Install this product with sufficient safety margin from the pool to prevent children from using the system to access the pool.
- Never PLUG or UNPLUG this unit from an electrical source while standing in water.
- NEVER service this unit with electrical power cord connected.
- DO NOT operate the system while the pool is being used.
- KEEP CHILDREN AWAY from all electrical equipment.
- NEVER ALLOW CHILDREN TO OPERATE THIS EQUIPMENT.
- The Pool Owner should always exercise caution and common sense when utilizing their swimming pool and operating equipment.

B. General Information

This manual provides information relating to the installation, utilization and maintenance of our filtration system. We recommend that you read this manual in its entirety and keep it for future reference,

The pump included with the filtration system is a horizontal, self-priming centrifugal pump. For the pump to function correctly, the water temperature must not exceed 35°C/95°F. The materials used in the pump have undergone stringent hydraulic testing and electrical inspections.

The filter tank included in the filtration system consists of high-grade polypropylene (PP).

It is manufactured as a single unit (absolutely corrosion resistant and resistant to commercially available swimming pool chemicals). (Prerequisite: Compliance with the standard recommended specifications for the pH- and chlorine value). It is equipped with a tank drainage system, pressure gauge, built-in container components, e.g. bottom laterals for even water distribution. The filter tank comes ready to attach and is supplied with a user-friendly 7 Position Multi-Port Valve attached to the tank cover, an approved filter pump with hair and lint basket, and a plastic base for ready on-site mounting.

Read this manual carefully before installation. The filtration system and pump must be installed in accordance with all federal and local codes and standards in effect for the area of installation.

We decline all responsibility for the consequences of failure to comply with the installation instructions. We recommend that you comply with the power source instructions to avoid overloading the pump motor and/or electric shock.

This filtration system is not intended for use by persons with reduced physical, sensory or mental capabilities, or lack of experience and knowledge.

Safety notes and information boxes should always be observed.

C. Safety Notes

Your filter pump was constructed and tested and left the manufacturing plant in technically operational condition. In order to maintain this condition and ensure safe operation, the user should observe the notes and product information contained in this technical manual. If there is any indication that safe operation is no longer possible, the device is to be disconnected from the power supply and secured against accidental use.

This is the case when:

- The device has visible damage.
- The device no longer appears functional.
- After long periods of storage in poor conditions.

If the power cord or other parts of this equipment are damaged, they have to be replaced by manufacturer or its service agent or a similarly qualified person in order to avoid danger.

D. Damage during delivery

Your filter system has been carefully and professionally packed for delivery. Please check to ensure that the package is undamaged and that all parts are in the box. If you purchased this product on order and the product was shipped to you, ensure that delivery is complete. Damage to product as a result of shipping is not the responsibility of the supplier and must be immediately reported to the shipper. The shipper assumes the liability for damages during delivery, the supplier is not responsible for it.

E. Implied Warranty

The manufacturer warranties safe operation and reliability only under the following conditions:

- The filter system is installed and operated according to the assembly and operating instructions.

- Only original replacement parts are used for repairs or replacements (consumable & expendable parts do not fall under the warranty).

Expendable parts that do not fall under the warranty include:

- All O-rings
- Pressure gauge
- Mechanical seal, complete
- Hoses and metal hose clamps

F. Resultant Damages

We cannot be responsible for damages to the product if the product is not used in accordance with the instructions provided.

G. Technical Data and Specifications

- The recommended filter run time is twice a day for 4 to 5 hours; regular backwashing time is 2-3 minutes at least once a week, and floor vacuum cleaning as needed are the basic pump requirement for maintaining clean swimming pool water!
- The major components for all models are: (Confirm you have all these components before starting installation)

The 7-way valve, filter pump, filter tank, 1 1/4"-1 1/2" hose connectors and base plate.

| | |
|---------------------------|-------------------------------|
| Model | NE4500 (600-HTA2SP100) |
| Flow rate: | 5280 GPH |
| Voltage/Frequency: | 115V/60Hz |
| Power | 2 Speed 1 HP |
| Amount of Sand: | Max 300lbs |
| Pool size: | Max 15000 US gal |
| Model | NE4501 (600-HTA2SP150) |
| Flow rate: | 5520 GPH |
| Voltage/Frequency: | 230V/60Hz |
| Power | 2 Speed 1.5 HP |
| Amount of Sand: | Max 300lbs |
| Pool size: | Max 25000 US gal |
| Model | NE4502 (600-HTI2SP100) |
| Flow rate: | 5040 GPH |
| Voltage/Frequency: | 230V/60Hz |
| Power | 2 Speed 1 HP |
| Amount of Sand: | Max 300lbs |
| Pool size: | Max 15000 US gal |
| Model | NE4503 (600-HTI2SP150) |
| Flow rate: | 5520 GPH |
| Voltage/Frequency: | 230V/60Hz |
| Power | 2 Speed 1.5 HP |

| | |
|---------------------------|---------------------------------|
| Amount of Sand: | Max 300lbs |
| Pool size: | Max 25000 US gal |
| Model | NE4504 (600-HTI2SP200) |
| Flow rate: | 6360 GPH |
| Voltage/Frequency: | 230V/60Hz |
| Power | 2 Speed 2 HP |
| Amount of Sand: | Max 300lbs |
| Pool size: | Max 40000 US gal |

H. Unpacking your filter system

Carefully remove the product and all component parts from the box. Cross reference all parts in the box with the parts list reference chart to make certain all parts are present before beginning assembly.

NOTE: Some parts may be located within the filter tank. To access these parts, you must remove the tank cover.

Refer to *pages 12-16 for complete EXPLODED VIEW PARTS DIAGRAMS.

I. Power source instructions

1. The Above Ground filter pump system you have purchased is equipped with a standard electrical cord and plug which should only be connected to a power outlet protected by a 30 Amp Ground-Fault-Circuit-Interrupter (GFCI) that has been installed by a professional electrician and adheres to local codes and regulations.
2. To avoid electric shock, power cord extensions should not be used.
3. Electrical installations for In Ground Systems should be carried out by a licensed local electrician and follow all the applicable national and local specifications and codes for swimming pool construction.

J. Positioning your filter system

- For the operation of this filter system with Above Ground pools, you need a skimmer installed in your pool. Either an integrated skimmer (built into the pool wall) or a suspended skimmer (attachment to the pool wall).
- For In Ground pools, follow all National & Local codes relative to suction and entrapment avoidance.
- The installation area must allow an adequate safety margin to the pool wall.
- We recommend putting the filter system on a concrete slab or similar. Be sure the installation is level.
- Additional installation accessories such as hoses, hoses clamps, and filter sand (not included) are available from your pool dealer.

K. Filter-Pump Assembly (Figure1)

1. Filter pump & Base Plate assembly
Secure filter pump to the base plate with the provided pump mounting hardware. Orient as shown.

2. The filter pump consists of the following components:

- a. Pump body
- b. 7 position valve
- c. Internal Seal (O-Ring) seal
- d. Valve plate clamping ring with bolt & nut
- e. Filter tank
- f. Riser pipe with hub for filter laterals
- g. Filter laterals
- h. Drain plug assembly
- i. Centering plate & Sand guard
- j. Base plate
- k. Pressure hose or Pre-assembled PVC pipe

3. Filter Tank assembly

- a. The riser pipe including connector for filter laterals is inserted into the tank (Figure 2). Connect the filter laterals with the connecting hub for the filter laterals by screwing into the hub (Figure 2&3).
- b. Install the tank drain assembly as shown in figure 1, key 8.
- c. Make sure that the riser pipe and laterals are seated on the bottom of the tank.
- d. Put the centering plate sand guard on the tank opening, while centering the riser pipe. (Figure 4)

- e. Fill the filter tank to about 1/8 depth with water then up to 3/4 full with #20 Pool Filter Grade silica sand.

NOTE: Installation of sand other than #20 Pool Filter Grade silica sand will NOT function properly, and may void your warranty.

Cotton Tails filter media can be substituted for #20 Pool Filter Grade silica sand .

- f. Attach the 7 position valve to the Tank opening using the thick O-ring and the clamping ring (Figure 1, 5&6). Before you do this, clean tank opening to wash off any sand or accumulated debris. The clamping ring is connected with the clamping ring bolt and nut (Figures 5 & 6).

- g. The pressure gauge (if included) is screwed to the side of the 7 position valve.

Seal with Teflon tape. The pre-installed vent plug must be removed first (Figure 9).

- h. Attach the pump fittings to the 7 position valve. Seal the pump fittings sufficiently with "Teflon" tape, available at any plumbing or hardware store.

4. Pump Hose Connections (Figure 7)

- a. Skimmers: Connect hose from pool skimmer to the intake fitting on the filter pump.
- b. Pressure line: Connect the pre-assembled hard PVC pipe from the upper discharge point on the top of the filter pump to the connector with designation "PUMP" on the 7-way valve.
- c. Return line: Connect flexible hose or hard PVC pipe from the 7-way valve port with the designation "RETURN" to the connection for the pool location. Secure all connections with hose clamps or glue PVC pipe connections.
- d. Backwash: Connect to "WASTE" using backwash hoses and clamps or glued PVC pipe. Backwash hose, clamps or PVC pipe are available from your local swimming pool retail professional.

L. Filter system start up

Once the filter system has been properly assembled, the tank filled with #20 Pool Filter Grade silica sand or Cotton Tails and the hoses connected as described, you may begin filtration. However, we recommend that you first clean and prepare the new sand. Cleaning the sand prior to filtering your pool will remove most of the dust and tiny sand particles that may exist in the sand. If you move straight to filtering, these particles will end up in your pool. To clean the sand, please follow the instructions below.

Do not turn on the system until advised to do so.

Note: Do not back wash on initial installation if filter media is Cotton Tails. Follow the use instructions provided with Cotton Tails.

1a. Cleaning the sand for Above Ground Pools

The swimming pool must be filled with water, according to the instructions of your pool dealer. The water must flow towards the filter pump. Slightly open the pre-filter lid until water flows from the pre-filter top (transparent cover with screw connection on the top of the filter pump).

Release the shut off valve at the intake port (Skimmer) in the pool. If you plugged the intake port (Skimmer), remove the plug to allow the water to flow into the intake hose.

With the filter-pump system installed in a level location lower than your pool's water level water will automatically flow into the pump-filter system. Allow the filter tank to fill with water. Check for leaks and make any necessary adjustments to stop any leaks found.

It may be necessary to use "Teflon" tape, available at any plumbing or hardware store, wrapped around the hose fittings threads, in order to stop leaks.

1b. For In Ground Pools

Insure all PVC fittings and unions are tight.

Prime the pre-filter with water, replace lid and turn on pump.

2. Start with the multi-position valve in position #5, Closed.

3. Follow the backwash process described below:

- Turn off the Motor/Pump at the Power Source.
- Attach backwash hose (not included) to backwash port.
- Place the Multi-Port Valve in the "4 – Backwash" position.
- Turn on the Pump
- Run filter in BACKWASH mode until discharge water is clear.
- Turn off the Motor/Pump at the Power Source.
- Place the Multi-Port Valve in the "2 – RINSE" position.
- Turn on the Pump
- Allow filter to run for 60 seconds to remove any remaining sand or debris residue from pump and valve.
- Turn off the Pump at the Power Source.
- Place the Multi-Port Valve in the "1 – Filtration" position.
- Turn on the Pump.
- Your filtration system is running and ready for further operation.

M. Filter Valve Position Operation

| Setting | Complete water flow/function |
|---------------------------|---|
| Filter Position 1 | <u>Function:</u> Regular pool filter action & vacuuming. This is the setting the filter will be set to most of the time. In this position, water is directed through the top of the filter where it compresses and flattens down the sand. Contaminations are trapped by the sand as water makes it way to the bottom strainer, out of the filter and back to the pool. |
| Rinse Position 2 | <u>Function:</u> Use after backwashing to clean the filter bed. This should always be done immediately after backwashing, new sand addition or filter start-up. In this position, water is directed to the top of the tank where it flushes the valve while sending water out the waste line. |
| Circulation Position 3 | <u>Function:</u> Circulate water after chemical treatment. This position is used during certain pool cleanups and chemical treatments when you don't want the water contaminating the sand. In this position, water is only directed through the valve back to the pool and does not filter through the sand. |
| Backwash Position 4 | <u>Function:</u> Clean filter of captured debris. This is the position needed to clean the filter & the sand. You'll know it is time to backwash when the pressure gauge shows more than 10 PSI above what it normally reads when the filter is clean. In this position, water is directed through the bottom strainer, reversing the flow through the tank. This causes the sand to separate and lift while releasing trapped debris out the waste port and backwash hose. |
| Closed Position 5 | <u>Function:</u> Cleaning the hair and lint strainer. This position stops the flow of water into the pump and filter. CAUTION: Do not run pump with valve in this position. |
| Purge/Drain Position 6 | <u>Function:</u> Bypass the filter. This position is ideal for vacuuming pools with large amounts of debris or after an algae treatment. In this position, water bypassed the filter and sends all the water and contaminates out the waste line. |
| Winterize Position 7 | <u>Function:</u> Winterizing and storage. In this position, the valve lever is between positions which removes pressure from internal valve components for winter (off-season) storage. CAUTION: Do not run pump with valve in this position. |

N. Manual Vacuuming the Pool

1. For Above Ground Pools

Vacuuming is done in valve position #1, Filter, on the valve. The pool vacuum is connected by use of a pool vacuum hose and vacuum plate directly into the skimmer. Do not turn on the pump until the pool vacuum is connected and ready for operation.

Important: The pool vacuum hose must be fully filled with water so that the pump does not lose prime and fill the tank with air.

2. For In Ground Pools

Follow vacuuming instructions from your pool professional for the type of vacuum system installed or being utilized.

P. Winterize the system in cold weather climates

1. For Above Ground Pools

- Unplug the pump from the power source.
- Close the shut off valves or block the flow of water at the pool inlet and return ports.
- Disconnect the filtration system from the pool, drain the tank and hoses.
- Place the handle on the central valve in position 7- 'Winterize' to relieve the tension on the spring and internal valve components.
- Store the filter system in a location protected from frost and severely cold temperatures. In a garage or insulated storage shed is recommended.

2. For In Ground Pools

- We recommend you contact and follow the instructions from your local pool service professional.

Q. Important Do's & Don'ts

DO'S:

- Be aware and make note of the filter pressure when the sand is clean. Backwash when you see an increase of 10 PSI on the pressure gauge.
- Backwash long enough to clean the sand bed. Let the system backwash until the water leaving the waste line is clear. Note that backwashing can remove 50 – 300 gal of water from your pool so pay attention. Also, be aware of local codes regarding pool water disposal as some communities have rules or codes regarding pool water drainage.
- Protect bottom strainer while replacing or adding sand. Fill the tank with 8" – 12" (about 1/8 of tank height) of water. Cover the water chamber to avoid getting sand inside the riser pipe and laterals.
- Start filter in Backwash mode about 3 minutes and then for about 1 minute in the rinse mode before initial startup or after adding new sand. By doing this you can avoid blowing small particles and impurities from the new sand into your pool. If some debris from new sand does go into your pool, vacuum it with the system in purge mode, otherwise you may send it back to the pool.

DON'TS:

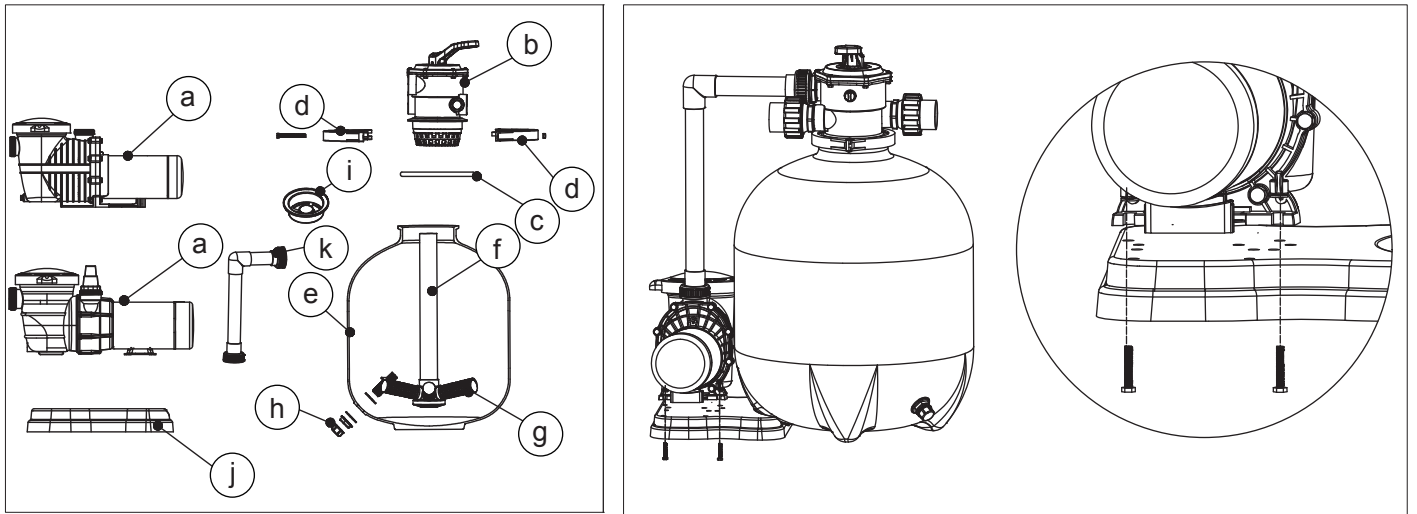
- Move valve handle while the pump is running. It will damage the valve and possibly other equipment as well.
- Backwash excessively. Sand filters operate more efficiently during mid-cycle. Some level of debris in the sand bed actually helps filtration and makes the filter more effective. Too much backwashing will reduce efficiency.
- Vacuum the pool in backwash mode. You can plug up the strainer at the bottom of the filter which will result in inefficient operation. Plus you may have to remove all of the sand to get it unclogged.
- Let filtration system run dry (without water)! If your pump runs dry too long non-warranty damage to the pump may occur. Damage to the pump caused by dry running is NOT covered by the warranty.

R. Trouble Shooting

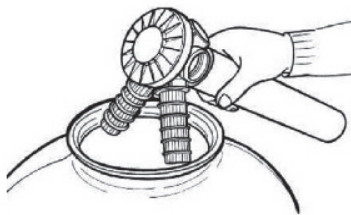
| Malfunction | Cause | Solution |
|--|--|---|
| Pressure gauge has reading more than 10 PSI over the normal filtering pressure | Dirty filter bed | Backwash the filter (position 4) |
| Pressure is too low | Hair and lint strainer basket is dirty; Pump gets too little water | Clean the hair and lint strainer; check the suction line and the water level |
| Air in the pump | Poor seal on the intake side of pump | Tighten hose clamps and connecting fittings |
| Leaking filter | Seal Defective | Check the seal, replace if needed |
| Pump does not run | Not plugged in | Check the socket and power cord |
| | G.F.C.I./ or main circuit breaker tripped | Switch on the breaker (if it is immediately tripped again, there is a defect in pump or controls) |
| | Pump motor defective | Replace motor or entire pump |
| Sand in Pool | If the sand is newly replaced, the undersized grains are still present | Backwash several times until the backwash water is clear (position 4) |
| | Sand in Central Valve (from backwash) | Purge into drainpipe for 30 seconds (position 6) |
| | Filter bottom strainer or laterals are damaged | Replace the filter bottom strainer |
| Air in system | | Loosen, but do not re-move, the air relief valve plug on the multi-position valve to allow any trapped air to escape. Tighten the valve plug once all of the air has escaped. |

S. Installation and Operation Illustration Figures

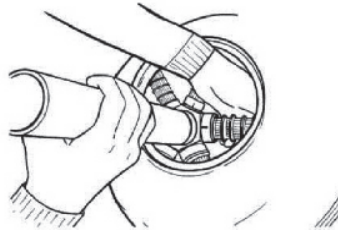
1



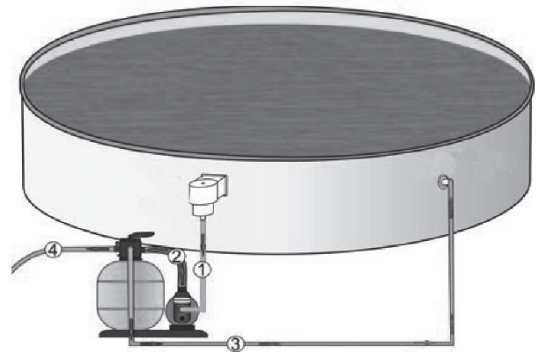
2



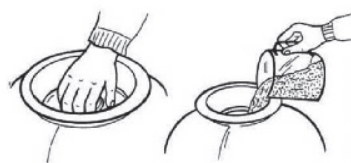
3



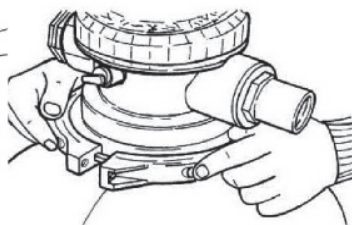
7



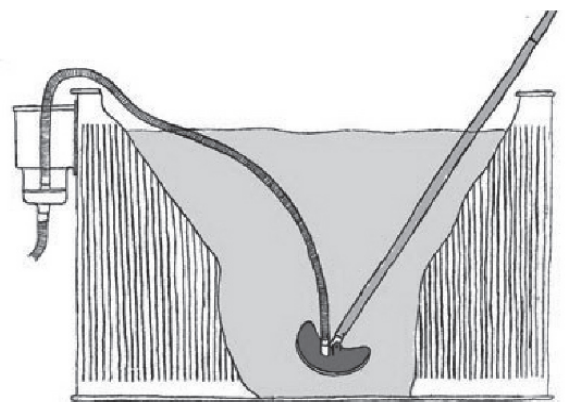
4



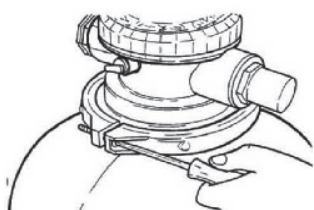
5



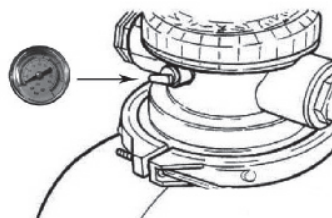
8



6



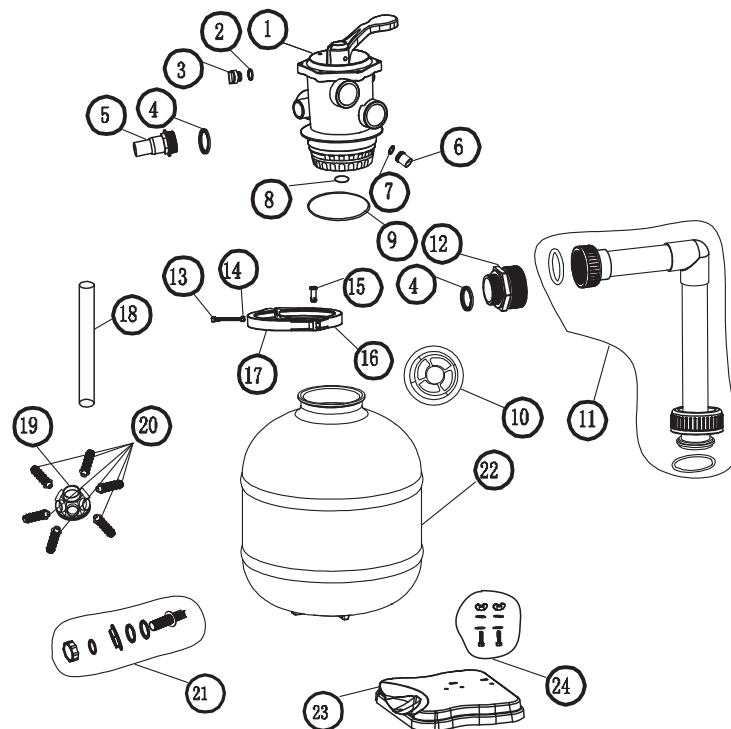
9



T. Pumps for use with Above Ground Pools

FX PRO 22" NE4500 & NE4501 WITH FLOWXTREME PUMP PARTS BREAKDOWN

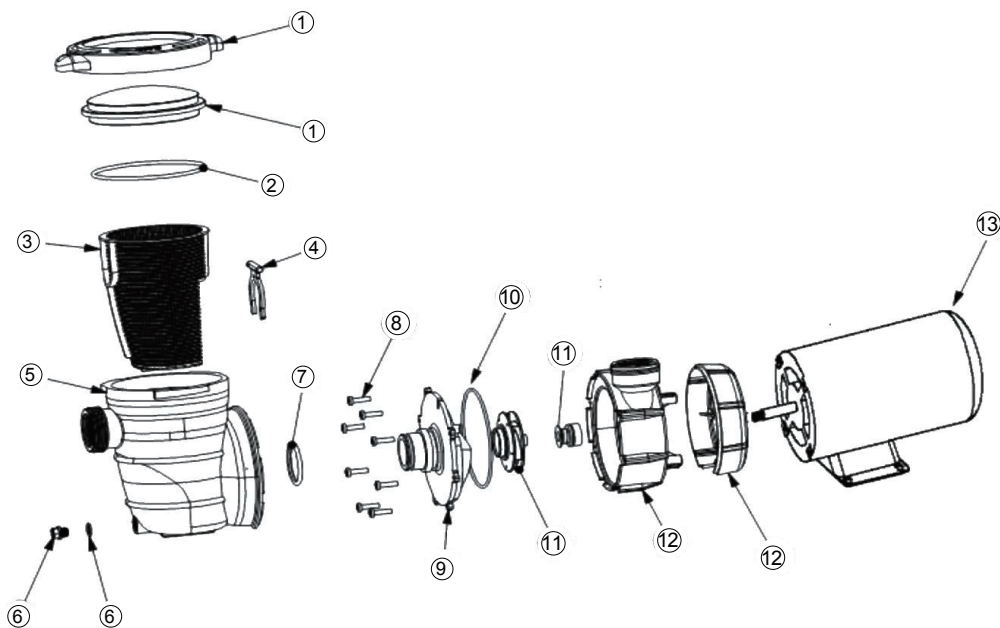
| Key | Part Name | Qty | Manf.No. | B.W.No. | For Model# |
|-----|--|-----|----------|---------|-------------|
| 1 | 7-WAY VALVE | 1 | 3001 | NEP4060 | NE4500-4504 |
| 2 | O-Ring | 1 | 3002 | NEP4061 | NE4500-4504 |
| 3 | CAP | 1 | 3003 | NEP4062 | NE4500-4504 |
| 4 | VALVE CONNECTOR GASK ET | 3 | 3004 | NEP4063 | NE4500-4504 |
| 5 | VALVE CONNECTOR 1 | 2 | 3005 | NEP4064 | NE4500-4504 |
| 6 | TRANSPARANCY CAP | 1 | 3006 | NEP4065 | NE4500-4504 |
| 7 | GASKET | 1 | 3007 | NEP4066 | NE4500-4504 |
| 8 | VALVE GASKET | 1 | 3008 | NEP4067 | NE4500-4504 |
| 9 | VALVE BIG O-RING | 1 | 30095 | NEP4092 | NE4500-4504 |
| 10 | SAND FUNNEL | 1 | 3010 | NEP4068 | NE4500-4504 |
| 11 | CONNECTOR PIPE KIT | 1 | 30116H | NEP4126 | NE4500-4504 |
| 12 | VALVE CONNECTOR 2 | 1 | 3012H | NEP4127 | NE4500-4504 |
| 13 | SCREW (BOLT) | 1 | 3013 | NEP4070 | NE4500-4504 |
| 14 | NUTS & WASHER | 1 | 3014 | NEP4071 | NE4500-4504 |
| 15 | CLAMP PIN | 1 | 3015 | NEP4072 | NE4500-4504 |
| 16 | RIGHT CLAMP | 1 | 3016 | NEP4073 | NE4500-4504 |
| 17 | LEFT CLAMP | 1 | 3017 | NEP4074 | NE4500-4504 |
| 18 | LONG PIPE 600 | 1 | 30186 | NEP4097 | NE4500-4504 |
| 19 | DISTRIBUTOR | 1 | 3019 | NEP4076 | NE4500-4504 |
| 20 | LONG FILTER FINGER | 6 | 30205 | NEP4099 | NE4500-4504 |
| 21 | DRAIN VALVE | 1 | 3021 | NEP4077 | NE4500-4504 |
| 22 | 22" BIG BLOW MOULDED | | 30226 | NEP4102 | NE4500-4504 |
| 23 | BASE PLATE | 1 | 3023 | NEP4078 | NE4500-4504 |
| 24 | Pump Bolt Wing Nut PUMP MOUNTING | 2 | P00175 | NEP4261 | NE4500-4504 |
| | Pump Bolt Flat Washer PUMP MOUNTING | 2 | P00176 | NEP4262 | NE4500-4504 |
| | Pump Bolt Lock Washer PUMP MOUNTING | 2 | P00177 | NEP4263 | NE4500-4504 |
| | Pump Bolt Nut PUMP MOUNTING | 2 | P00178 | NEP4264 | NE4500-4504 |



FX PRO II NE4513,NE4514,NE4515,NE4516,NEP4208 PUMP SERIES

PARTS BREAKDOWN

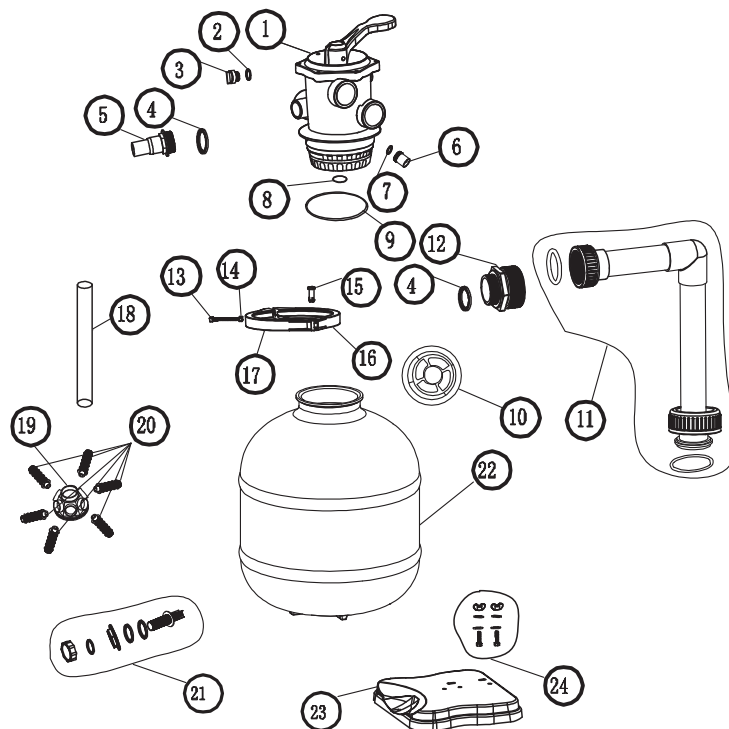
| Key | Part Name | Manf. No. | B.W. No. | For Model# |
|-----|-------------------------------------|-----------|----------|-----------------|
| 1 | LID | HTA001 | NEP4185 | All |
| | TRANSPARENT COVER | HTA002 | NEP4186 | All |
| 2 | O-RING | HTA003 | NEP4187 | All |
| 3 | BASKET | HTA004 | NEP4188 | All |
| 4 | CLAMP | HTA005 | NEP4189 | All |
| 5 | STRAINER | HTA006 | NEP4190 | All |
| 6 | DRAIN PLUG | HTA007 | NEP4191 | All |
| | DRAIN PLUG O-RING | HTA008 | NEP4192 | All |
| 7 | O-RING | HTA009 | NEP4193 | All |
| 8 | SCREW | HTA010 | NEP4194 | All |
| 9 | PUMP COVER | HTA011 | NEP4195 | All |
| 10 | O-RING | HTA012 | NEP4196 | All |
| 11 | IMPELLER OF ITEM#HTA 075/HTA2SP 075 | HTA014 | NEP4198 | NE4513 & NE4515 |
| | IMPELLER OF ITEM#HTA 100/HTA2SP 100 | HTA015 | NEP4199 | NE4514 & NE4516 |
| | IMPELLER OF ITEM#HTA 150/HTA2SP 150 | HTA016 | NEP4200 | NEP4208 |
| 12 | PUMP HOUSING | HTA017 | NEP4201 | All |
| 13 | MOTOR OF ITEM#HTA 075 | HTA019 | NEP4203 | NE4513 |
| | MOTOR OF ITEM#HTA 100 | HTA020 | NEP4204 | NE4514 |
| | MOTOR OF ITEM#HTA2SP 075 | HTA022 | NEP4206 | NE4515 |
| | MOTOR OF ITEM#HTA2SP 100 | HTA023 | NEP4207 | NE4516 |
| | MOTOR OF ITEM#HTA2SP 150 | HTA024 | NEP4208 | NEP4208 |



U. Pumps for use with In Ground Pools

FX PRO 22" NE4502, NE4503& NE4504 WITH FLOWXTREME PUMP PARTS BREAKDOWN

| Key | Part Name | Qty | Manf.No. | B.W.No. | For Model# |
|-----|--|-----|----------|---------|-------------|
| 1 | 7-WAY VALVE | 1 | 3001 | NEP4060 | NE4500-4504 |
| 2 | O-Ring | 1 | 3002 | NEP4061 | NE4500-4504 |
| 3 | CAP | 1 | 3003 | NEP4062 | NE4500-4504 |
| 4 | VALVE CONNECTOR GASKET | 3 | 3004 | NEP4063 | NE4500-4504 |
| 5 | VALVE CONNECTOR 1 | 2 | 3005 | NEP4064 | NE4500-4504 |
| 6 | TRANSPARANCY CAP | 1 | 3006 | NEP4065 | NE4500-4504 |
| 7 | GASKET | 1 | 3007 | NEP4066 | NE4500-4504 |
| 8 | VALVE GASKET | 1 | 3008 | NEP4067 | NE4500-4504 |
| 9 | VALVE BIG O-RING | 1 | 30095 | NEP4092 | NE4500-4504 |
| 10 | SAND FUNNEL | 1 | 3010 | NEP4068 | NE4500-4504 |
| 11 | CONNECTOR PIPE KIT | 1 | 30116H | NEP4126 | NE4500-4504 |
| 12 | VALVE CONNECTOR 2 | 1 | 3012H | NEP4127 | NE4500-4504 |
| 13 | SCREW (BOLT) | 1 | 3013 | NEP4070 | NE4500-4504 |
| 14 | NUTS & WASHER | 1 | 3014 | NEP4071 | NE4500-4504 |
| 15 | CLAMP PIN | 1 | 3015 | NEP4072 | NE4500-4504 |
| 16 | RIGHT CLAMP | 1 | 3016 | NEP4073 | NE4500-4504 |
| 17 | LEFT CLAMP | 1 | 3017 | NEP4074 | NE4500-4504 |
| 18 | LONG PIPE 600 | 1 | 30186 | NEP4097 | NE4500-4504 |
| 19 | DISTRIBUTOR | 1 | 3019 | NEP4076 | NE4500-4504 |
| 20 | LONG FILTER FINGER | 6 | 30205 | NEP4099 | NE4500-4504 |
| 21 | DRAIN VALVE | 1 | 3021 | NEP4077 | NE4500-4504 |
| 22 | 22" BIG BLOW MOULDED | | 30226 | NEP4102 | NE4500-4504 |
| 23 | BASE PLATE | 1 | 3023 | NEP4078 | NE4500-4504 |
| 24 | Pump Bolt Wing Nut PUMP MOUNTING HARDWARE | 2 | P00175 | NEP4261 | NE4500-4504 |
| | Pump Bolt Flat Washer PUMP MOUNTING HARDWARE | 2 | P00176 | NEP4262 | NE4500-4504 |
| | Pump Bolt Lock Washer PUMP MOUNTING HARDWARE | 2 | P00177 | NEP4263 | NE4500-4504 |
| | Pump Bolt Nut PUMP MOUNTING HARDWARE | 2 | P00178 | NEP4264 | NE4500-4504 |



FX PRO II NE4517,NE4518,NE4519,NE4520,NE4521,NE4522

PUMP SERIES PARTS BREAKDOWN

| Key | Part Name | Manf. No. | B.W. No. | For Model# |
|-----|-------------------------------------|-----------|----------|-----------------|
| 1 | LID W/TRANSPARENT COVER | HTI001 | NEP4209 | All |
| 2 | O-RING | HTI002 | NEP4210 | All |
| 3 | BASKET | HTI003 | NEP4211 | All |
| 4 | STRAINER | HTI004 | NEP4212 | All |
| 5 | DRAIN PLUG | HTI005 | NEP4213 | All |
| | DRAIN PLUG O-RING | HTI006 | NEP4214 | All |
| 6 | O-RING | HTI007 | NEP4215 | All |
| 7 | DIVERSION SETS | HTI008 | NEP4216 | All |
| 8 | IMPELLER OF ITEM#HTI 075/HTI2SP 075 | HTI009 | NEP4217 | NE4519 |
| 8 | IMPELLER OF ITEM#HTI 100/HTI2SP 100 | HTI010 | NEP4218 | NE4517 & NE4520 |
| 8 | IMPELLER OF ITEM#HTI 150/HTI2SP 150 | HTI011 | NEP4219 | NE4518 & NE4521 |
| 8 | IMPELLER OF ITEM#HTI 200/HTI2SP 200 | HTI012 | NEP4220 | NE4522 |
| 9 | O-RING | HTI013 | NEP4221 | All |
| 10 | PUMP HOUSING | HTI014 | NEP4222 | All |
| 11 | SCREW | HTI015 | NEP4223 | All |
| 12 | MOTOR OF ITEM#HTI 100 | HTI017 | NEP4225 | NE4517 |
| 12 | MOTOR OF ITEM#HTI 150 | HTI018 | NEP4226 | NE4518 |
| 12 | MOTOR OF ITEM#HTI2SP 075 | HTI020 | NEP4228 | NE4519 |
| 12 | MOTOR OF ITEM#HTI2SP 100 | HTI021 | NEP4229 | NE4520 |
| 12 | MOTOR OF ITEM#HTI2SP 150 | HTI022 | NEP4230 | NE4521 |
| 12 | MOTOR OF ITEM#HTI2SP 200 | HTI023 | NEP4231 | NE4522 |
| 13 | CARRIER | HTI024 | NEP4232 | All |

