



FlowXtreme **PLUS**

FlowXtreme Plus Filter System Manual



CONGRATULATIONS!

YOU HAVE PURCHASED A HIGH QUALITY FlowXtreme Plus FILTRATION SYSTEM FOR YOUR ABOVE GROUND POOL. YOUR NEW FILTER SYSTEM HAS BEEN MANUFACTURED AND TESTED TO OFFER MANY YEARS OF TROUBLE FREE SERVICE.

IMPORTANT – READ THIS MANUAL CAREFULLY

A. Safety Warnings

Read all Warnings and Cautions noted below. Failure to do so could result in serious or fatal injury.

- Prior to installation of this unit, carefully read and adhere to all CAUTION, ATTENTION, and ADVICE notices located throughout this manual. Failure to comply with these instructions can cause serious injury, death, or damage to the unit.
- RISK OF SUCTION ENTRAPMENT HAZARD, WHICH, IF NOT AVOIDED CAN RESULT IN SERIOUS INJURY OR DEATH. Do not block pump suction at the pump or in the pool as this can cause severe injury or death.
- Electrical wiring MUST be installed by trained professional and adhere to local code and regulations.
- Avoid electric shock. DO NOT USE power extension cords.
- Connect ONLY to a Ground-Fault Circuit Interrupter (GFCI) power outlet. Consult a qualified professional electrician for safe and proper installation of a qualified electrical outlet.
- Incorrectly installed equipment may fail, causing severe injuries or damage to the pump-filter system.
- Never submerge the filter and/or pump in water.
- Never place the pump or filter in your pool.
- Trapped air in the pump-filter system may cause the TANK COVER to be blown off which can result in death, serious injury, or damage to the pump-filter system. Ensure all air is out of system before operating.
- Install this product with sufficient safety margin from the pool to prevent children from using the system to access the pool.
- Never PLUG or UNPLUG this unit from an electrical source while standing in water.
- NEVER service this unit with electrical power cord connected.
- DO NOT operate the system while the pool is being used.
- KEEP CHILDREN AWAY from all electrical equipment.
- NEVER ALLOW CHILDREN TO OPERATE THIS EQUIPMENT.
- The Pool Owner should always exercise caution and common sense when utilizing their swimming pool and operating equipment.

B. General Information

This manual provides information relating to the installation, utilization and maintenance of our filtration system. We recommend that you read this manual in its entirety and keep it for future reference.

The pump included with the filtration system is a horizontal, centrifugal pump. For the pump to function correctly, the water temperature must not exceed 35°C/95°F. The materials used in the pump have undergone stringent hydraulic testing and electrical inspections.

The filter tank included in the filtration system consists of high-grade polypropylene (PP). It is manufactured as a single unit (absolutely corrosion resistant and resistant to commercially available swimming pool chemicals). (Prerequisite: Compliance with the standard recommended specifications for the pH- and chlorine value). It is equipped with a tank drainage system. The filter tank comes ready to attach with an approved filter pump.

Read this manual carefully before installation. The filtration system and pump must be installed in accordance with all federal and local codes and standards in effect for the area of installation.

We decline all responsibility for the consequences of failure to comply with the installation instructions. We recommend that you comply with the power source instructions to avoid overloading the pump motor and/or electric shock.

This filtration system is not intended for use by persons with reduced physical, sensory or mental capabilities, or lack of experience and knowledge.

Safety notes and information boxes should always be observed.

C. Safety Notes

Your filter pump was constructed and tested and left the manufacturing plant in technically operational condition. In order to maintain this condition and ensure safe operation, the user should observe the notes and product information contained in this technical manual. If there is any indication that safe operation is no longer possible, the device is to be disconnected from the power supply and secured against accidental use.

This is the case when:

- The device has visible damage.
- The device no longer appears functional.
- After long periods of storage in poor conditions.

If the power cord or other parts of this equipment are damaged, they have to be replaced by manufacturer or its service agent or a similarly qualified person in order to avoid danger.

D. Damage during delivery

Your filter system has been carefully and professionally packed for delivery. Please check to ensure that the package is undamaged and that all parts are in the box. If you purchased this product on order and the product was shipped to you, ensure that delivery is complete. Damage to product as a result of shipping is not the responsibility of the supplier and must be immediately reported to the shipper. The shipper assumes the liability for damages during delivery, the supplier is not responsible for it.

E. Implied Warranty

The manufacturer warranties safe operation and reliability only under the following conditions:

- The filter system is installed and operated according to the assembly and operating instructions.
- Only original replacement parts are used for repairs or replacements (consumable & expendable parts do not fall under the warranty).

Expendable parts that do not fall under the warranty include:

- All O-rings
- Pressure gauge if this filter system is equipped with one
- Mechanical seal, complete
- Hoses and metal hose clamps

F. Resultant Damages

We cannot be responsible for damages to the product if the product is not used in accordance with the instructions provided.

G. Technical Data and Specifications

1. Circulation power 1100 GPH
2. Pump is not self-priming
3. Maximum water temperature 35° (95°F)
4. 100W / 115V / 60HZ / 1/10HP
5. Tank diameter: 10”
6. 1¼”-1½“ Hose connectors
7. (0.8 lbs) of cotton tails are included
8. For use with pools up to 3,000 gallon

Filtering time:

The swimming pool’s water should be circulated and filtered at least 3 to 5 times in a 24 hours period, depending on the load and the size of the filter system. The time required is based on the performance of the filter system and the size of the swimming pool. However, we recommend a minimum running time of 10 to 12 hours per day.

H. Unpacking your filter system

Carefully remove the product and all component parts from the box. Cross reference all parts in the box with the parts list reference chart to make certain all parts are present before beginning assembly.

NOTE: Some parts may be located within the filter tank. To access these parts, you must remove the tank cover.

Refer to *page 9 for complete EXPLODED VIEW PARTS DIAGRAMS.

I. Power source instructions

1. The Above Ground filter pump system you have purchased is equipped with a standard electrical cord and plug which should only be connected to a power outlet protected by a 30 Amp Ground-Fault-Circuit-Interrupter (GFCI) that has been installed by a professional electrician and adheres to local codes and regulations.
2. To avoid electric shock, power cord extensions should not be used.

J. Positioning your filter system

- For best operation of this filter system with Above Ground pools, we recommend a skimmer be installed in your pool. Either an integrated skimmer (built into the pool wall) or a suspended skimmer (attachment to the pool wall).
- The installation area must allow an adequate safety margin to the pool wall.
- We recommend putting the filter system on a concrete slab or similar. Be sure the installation is level.

- Additional installation accessories such as hoses, hoses clamps are available from your pool dealer.

K. Filter-Pump assembly (Figure1)

1. Assemble the filter system at the location where the pump will be installed.

The filter pump consists of the following parts:

- a. 90° connector
 - b. Transparent cover
 - c. Clamping ring
 - d. Filter tank
 - e. 1¼"-1½" return to pool hose fitting
 - f. Tank and pump base plate
 - g. Filter pump
 - h. 1¼" diameter connection hose
2. Assembly of filter system (Figures 2, 3, 4 & 5) Also, review the parts breakdown and diagram
- a. Open the clamping ring and remove the transparent cover from the filter tank.
 - b. Fill the filter tank with the cotton tails which are included with the order, approx. 0.8 lbs.
 - c. Now place the large tank O-Ring onto the underside of the transparent cover.
 - d. Lay the transparent cover onto the upper neck of the filter tank. It is very important to ensure that all surfaces have been cleaned once again and are free from any dirt or debris before you do this.
 - e. The transparent cover is connected to the filter tank using the clamping ring. The clamping ring is screwed together with the clamping ring screw and clamping ring screw nut.
 - f. Fit the 90° connector on the upper side of the transparent cover.
 - g. Connect the 90° connector to the filter pump by using the connection hose provided. Fasten all connections with hose clamps and ensure that the pump connecting pieces are sealed using "Teflon" tape, (available at any plumbing or hardware store).
3. Pump hose connections (Figure 5)
- A. Return line – This is the hose connection between the filter tank and the pool's return water fittings. The filtered water is fed back into the pool at this point.
 - B. Skimmers or intake fittings – This is the hose connection between the pool skimmer or intake fittings and the filter pump. Water to be filtered is drawn from the pool and into the pump at this point.

L. Filter system start up Instructions

1. Once the filter system has been properly assembled, the cotton tails placed in the tank and the hoses connected as described above, you may begin with filtration.
2. Do not plug the system in until advised to do so.
3. Before operating the filter system, it is important to ensure that the filter system is positioned outside the pool and is lower than the pool's water level. The hose connections must also be correctly connected and fastened.
4. If you haven't already done so, fill your pool with water. Ensure that the water level is at least 1"- 2" above the top of the intake hose (Skimmer) and return fittings in the pool all.
5. Now vent the filter system. If applicable, open the air vent plug on the upper side of the transparent filter cover until the water flows out.
6. If your pool is so equipped, release the shut off valve at the intake port (Skimmer) in the pool. If you plugged the intake port (Skimmer), remove the plug to allow the water flow into the intake hose.

7. If the filter-pump system is installed in a location level and lower than your pool's water level, water will automatically flow into the pump-filter system.
8. Allow the filter tank to fill with water.
9. Check the filter system and the connection hoses for leaks and fix as needed. Leaking at connection points may happen due to manufacturing tolerances, these leaks are easily resolved by wrapping Teflon tape around the connections before the connecting hose is attached.
10. Your filter system is now ready for use.

M. Cleaning Cotton Tails Filtration Balls

1. Check the condition of the Cotton Tail balls frequently. Look for excess dirt and debris build up by inspecting through the clear tank lid or by checking the water pressure coming out of the return fitting. You will be able to tell if the Cotton Tails balls are becoming dirty and in need cleaning.
2. If the Cotton Tails balls are dirty and need cleaning, first shut off the pump at the power supply. Remove the clear tank lid, remove the Cotton Tails balls from the tank, rinse excess dirt and debris off the Cotton Tails and return to the filter tank. If there is a significant amount of dirt still in the Cotton Tail balls after rinsing you can place the Cotton Tail balls in a mesh laundry bag and wash in your clothes washing machine. Once you have cleaned the Cotton Tails balls return them to the filter tank, reconnect the clear tank lid, turn on the pump at the power supply and return to filtering your pool.
3. We recommend removing Cotton Tails at the end of the season, place in a mesh laundry bag, wash in your clothes washing machine, let dry and return to tank for next season.
4. Important note regarding Clarifiers
 - a. Pool water clarifiers or other chemical additives that bond to particulate matter for the purpose of improved filtration must not be used if Cotton Tails is the filtration media for your pool. This is the same warning or instruction that is commonly given for pools where Diatomaceous Earth is filtration media.
 - b. Like Diatomaceous Earth, Cotton Tails filters down to a very small particle size, 3 microns. Therefore, the addition of a clarifier will not improve the effectiveness of Cotton Tails. The clarifier or a similar chemical additive is likely to cause damage to the Cotton Tails resulting in significant reduction in the filtration capability. In addition, possible damage to the filtration tank or its internal components may occur.
 - c. Blue Wave will not be responsible for damage caused to the Cotton Tails, the filter tank or any of the internal components of the filter tank where a clarifier or other chemical additives that bond to particulate matter have been used in the pool.

N. Winter Storage

1. Disconnect the filter-pump assembly from the pool.
2. Drain the tank and the hoses.
3. The filter system must be thoroughly dried before winter storage to prevent freezing and cracking tank or pump components.
4. Store in a dry location protected from frost.

P. Trouble Shooting - Always turn off power to the pump before attempting any of the solution outlined below.

Malfunctions	Causes	Solutions
Water pressure is low or Cotton Tails looks dirty.	The Cotton Tails have absorbed too much dirt & debris from the water.	Clean the Cotton Tails filter media.
Water flow is too low.	Pump gets too little water.	Check the suction line and the water level in the pool.
Air in the pump.	Poor seal on the intake fittings of pump.	Tighten hose clamps and connecting fittings. Use Teflon tape if necessary. Open Air vent plug.
Leaking pump.	Seal is worn out or damaged.	Replace pump.
Pump does not run on initial start-up.	Poor power cord connection. Motor shaft is stuck.	Check the socket and power cord. Place a flat blade screwdriver into the slot at the rear of the motor shaft and gently turn to free.
Pump stops running or will not restart.	G.F.C.I. or main circuit breaker tripped. Debris blocking the impeller. Pump motor defective.	Switch on the circuit breaker (if it immediately tripped again, there is a defect in pump or controls). Fix or replace pump. Clean pump body. Replace motor or entire pump.

Q. Important Do's & Don'ts:

DO's:

1. Be aware and make note of the filter pressure when the Cotton Tails balls are clean. Remove and clean the Cotton Tails when they appear dirty or water flow from the pool's return fitting seems low.
2. Protect the tank's internal plumbing while cleaning the Cotton Tails balls.
3. Follow these cleaning instructions:
 - Drain the water from the filter tank, remove the tank lid from the tank while leaving the hoses attached to the lid
 - Empty the Cotton Tails balls on a smooth surface such as a plastic tarp.
 - Rinse excess dirt and debris from the Cotton Tails balls.
 - If still dirty place the rinsed balls into a mesh lingerie bag and wash in your clothes washer.
 - Return the cleaned Cotton Tails balls to the filter tank, okay either wet or dry.
 - Reassemble the filter tank lid and resume filtering the pool water.

DON'TS:

1. Over clean the Cotton Tails balls. This filter media operates more efficiently during mid-cycle when the balls are a little dirty. Too much cleaning will reduce efficiency.
2. Let the filter system run dry (without water). If your pump runs dry too long non-warranty damage may occur. In a case of dry running damage the product warranty will be voided.

R. FlowXtreme PLUS Cotton Tails System, NE4507, Installation Figures

Figure 1.

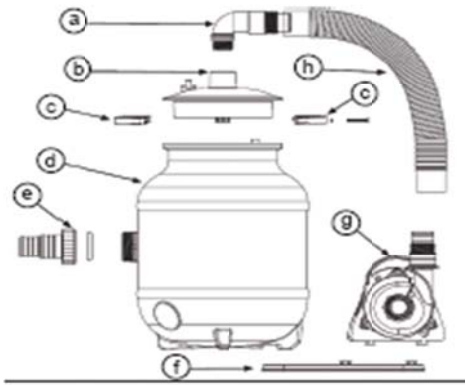


Figure 2 , 3

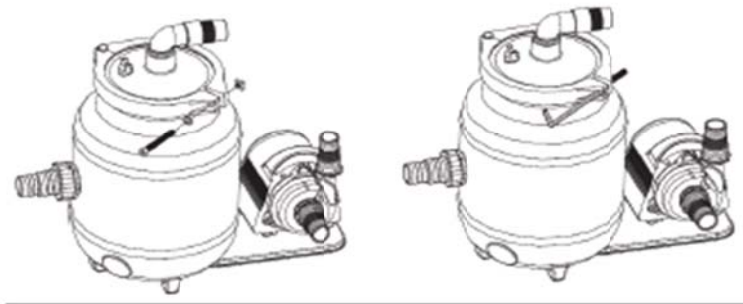


Figure 4

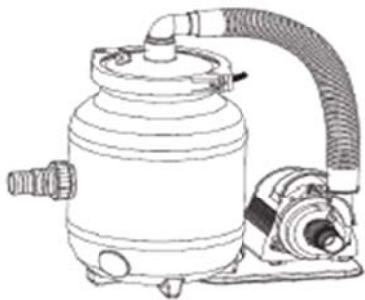
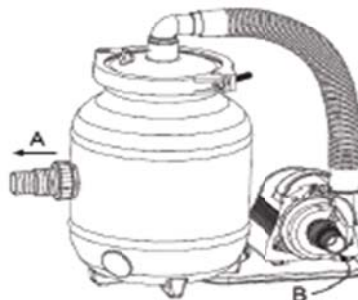
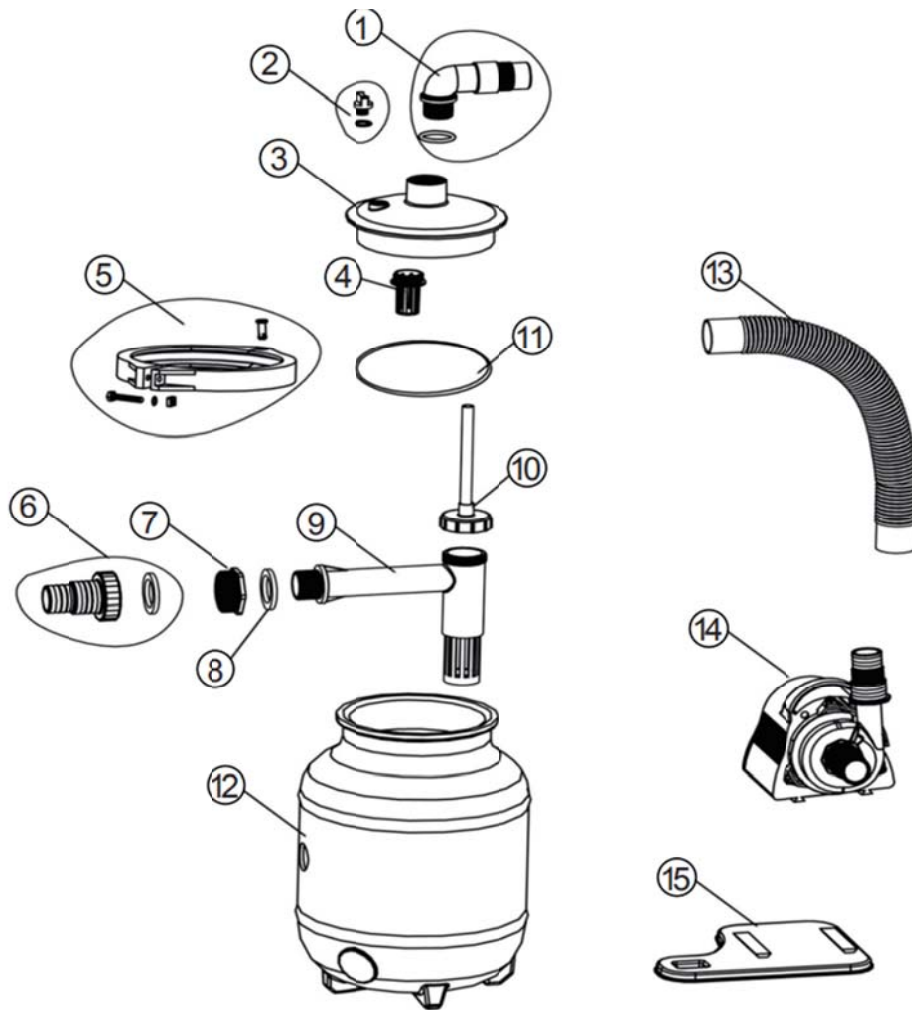


Figure 5



S. FlowXtreme PLUS Filter System, NE4507, Parts Breakdown & Diagram

Key	Part Name	Qty	Mfg. No.	B.W. No.	For Model#
1	ELBOW CONNECTOR	1	AF2001	NEP4166	NE4507
	WITH O-RING 1	1	AF2002	NEP4167	NE4507
2	AIR VENT PLUG	1	AF2003	NEP4168	NE4507
	WITH O-RING 2	1	AF2004	NEP4169	NE4507
3	CLEAR TANK COVER	1	AF2005	NEP4170	NE4507
4	UPPER WATER DISTRIBUTOR	1	AF2006	NEP4171	NE4507
5	CLAMP BOLT	1	3013	NEP4070	NE4507
	CLAMP BOLT NUT & WASHER	1	3014	NEP4071	NE4507
	CLAMP PIN	1	3015	NEP4072	NE4507
	RIGHT CLAMP HALF	1	3016	NEP4073	NE4507
	LEFT CLAMP HALF	1	3017	NEP4074	NE4507
6	1.25"- 1.5" (32/38MM) HOSE FITTING	1	AF2013	NEP4172	NE4507
	HOSE FITTING GASKET	1	AF2014	NEP4173	NE4507
7	TANK PLUMBING ADAPTOR	1	AF2015	NEP4174	NE4507
8	TANK PLUMBING ADAPTOR GASKET	2	AF2016	NEP4175	NE4507
9	INTERNAL PLUMBING "L" TUBE	1	AF2017	NEP4176	NE4507
10	AIR RELIEF PIPE	1	AF2018	NEP4177	NE4507
11	TANK COVER O-RING	1	AF2019	NEP4178	NE4507
12	BLOW MOULDED TANK	1	AF2020	NEP4179	NE4507
13	PUMP TO TANK LID HOSE	1	AF2021	NEP4180	NE4507
14	1/10HP WATER PUMP	1	AF2022	NEP4181	NE4507
15	BASE PLATE	1	AF2023	NEP4182	NE4507



ATTENTION

DO NOT RETURN THIS PRODUCT TO YOUR RETAILER. IF YOU ENCOUNTER ANY DIFFICULTIES WITH YOUR NEW SWIMMING POOL PUMP CONTACT BLUE WAVE CUSTOMER SERVICE FOR ASSISTANCE.

1-800-759-0977

T. Warranty Information

This product is warranted to the original purchaser to be free from defects in material or workmanship for a period of one (1) year from the date of the original retail purchase.

This warranty does not cover defects or damage due to improper installation, alteration, accident or any other event beyond the control of the manufacturer. Defects or damage resulting from misuse, abuse or negligence will void this warranty. This warranty does not cover scratching or damage that may result from normal usage.

This product is not intended for institutional or commercial use; the manufacturer does not assume any liability for such use. Institutional or commercial use will void this warranty.

This warranty is nontransferable and is expressly limited to the repair or replacement of the defective product. During the warranty period, the manufacturer shall repair or replace defective parts at no cost to the purchaser. Shipping charges and insurance are not covered and are the responsibility of the purchaser. Labor charges and related expenses for removal, installation or replacement of the product or components are not covered under this warranty.

The manufacturer reserves the right to make substitutions to warranty claims if parts are unavailable or obsolete.

The manufacturer shall not be liable for loss of use of the product or other consequential or incidental costs, expenses or damages incurred by the consumer of any other use. The user assumes all risk of injury resulting from the use of this product.

This warranty is expressly in lieu of all other warranties, expressed or implied, including warranties of merchantability or fitness for use to the extent permitted by Federal or state law. Neither the manufacturer nor any of its representatives assumes any other liability in connection with this product.

All warranty claims must include the retailer's information where the product was originally purchased. A purchase receipt or other proof of date of purchase will be required to process all warranty claims. The model number and part numbers found within the assembly instructions will be required when submitting any parts requests or warranty claims.

For further warranty information or inquiries, please call 1 (800) 759-0977 Or email warranty@splashnetxpress.com

**Blue Wave Products, Inc.
1745 Wallace Ave, Suite B
Saint Charles, IL 60174**

La garantie du produit est valide pour l'acheteur original en ce qui a trait aux pièces défectueuses ou à la main-d'œuvre pour une période de 1 année de la date d'achat.

Cette garantie n'est couverte pas les dommages causés par accident, par modification, par une installation défectueuse ou tout autre événement hors du contrôle du fabricant. Tout défaut ou dommage résultant de la négligence ou d'une mauvaise utilisation annule cette garantie. La présente garantie ne couvre pas les égratignures ou les dommages attribuables à un usage normal.

Ce produit n'est pas destiné à un usage institutionnel ou commercial; le fabricant décline toute responsabilité pour une telle utilisation. Un usage institutionnel ou commercial annule cette garantie.

Cette garantie est non transférable et est expressément limitée à la réparation ou au remplacement du produit défectueux. Au cours de la période de garantie, le fabricant s'engage à remplacer et à réparer les pièces défectueuses sans frais pour l'acheteur. Les frais d'assurance et d'expédition ne sont pas couverts et sont à la charge de l'acheteur. Les frais de main-d'œuvre et les dépenses liées au déplacement, à l'installation ou au remplacement du produit ou de ses composantes ne sont pas couverts par cette garantie.

Le fabricant se réserve le droit de faire des substitutions de recours en garantie si la pièce n'est pas disponible ou obsolète.

Le fabricant décline toute responsabilité liée à la perte d'utilisation ainsi que tous les autres coûts directs ou indirects, frais ou dommages encourus par le consommateur qui aurait été causés par une autre utilisation.

L'utilisateur assume tous les risques de dommage résultant de l'utilisation de ce produit.

Cette garantie tient lieu expressément de toute autre garantie, exprimée ou implicite, y compris les garanties de qualité marchande ou d'adaptation à un emploi particulier dans la mesure permise par les lois fédérales ou provinciales. Ni le fabricant, ni aucun de ses représentants n'assument aucune autre responsabilité en rapport avec ce produit.

Toute réclamation doit être faite par le détaillant où le produit a été acheté. Une facture ou autre preuve d'achat est nécessaire pour traiter toutes les réclamations de garantie. Le numéro de modèle et les numéros de référence figurant dans les instructions d'assemblage seront exigés lors de la soumission de demande de pièces ou de recours en garantie.

Pour plus d'information ou pour toute question, veuillez téléphoner au 1 (800) 759-0977 ou email warranty@splashnetxpress.com

**Blue Wave Products, Inc.
1745 Wallace Ave, Suite B
Saint Charles, IL 60174**