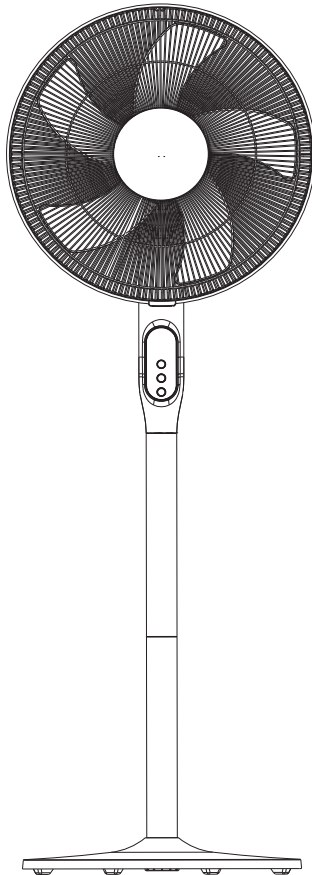




SF-16D48BK

16 inch DC Stand Fan



READ AND SAVE THESE INSTRUCTIONS

Attention: Pictures are for reference only and may not be exact

IMPORTANT SAFETY INSTRUCTIONS

CAUTION

Read Rules for Safe Operation and Instructions Carefully.

WARNING

1. Do not leave the fan running unattended.
2. Keep electrical appliances out of reach from Children or infirm persons. Do not let them use the appliances without supervision.
3. This appliance has a polarized plug (one blade is wider than the other). To reduce the risk of electric shock, this plug is intended to fit in a polarized outlet only one way. If the plug does not fit fully in the outlet, reverse the plug. If it still does not fit, contact a qualified electrician. Do not attempt to defeat this safety feature.
4. If the supply cord is damaged, it must be replaced by manufacturer or its serviceagent or a similarly qualified person in order to avoid a hazard.
5. This appliance is not intended for use by persons (including children) with reduced physical, sensory or mental capabilities, or lack of experience and knowledge, unless they have been given supervision or instruction concerning use of the appliance by a person responsible for their safety. Young children should be supervised to ensure that they do not play with the appliance.
6. When the fan was assembled, the rotor blade guard shall not be taken off anymore
 - Prior cleaning unplug the fan.
 - The rotor guard shall not be disassembled/opened to clean the rotor blades.
 - Wipe the fan enclosure and rotor blade guard with a slightly damp cloth.

7. **WARNING**—To reduce the risk of fire or electric shock, Do not use this fan with any solid-state speed control device.
8. This product employs overload protection (fuse). A blown fuse indicates an overload or short-circuit situation. If the fuse blows, unplug the product from the outlet. Replace the fuse as per the user servicing instructions (follow product marking for proper fuse rating) and check the product. If the replacement fuse blows, a short-circuit may be present and the product should be discarded or returned to an authorized service facility for examination and/or repair.
- a) “Do not operate any fan with a damaged cord or plug. Discard fan or return to an authorized service facility for examination and/or repair.”
- b) “Do not run cord under carpeting. Do not cover cord with throw rugs, runners, or similar coverings. Do not route cord under furniture or appliances. Arrange cord away from traffic area and where it will not be tripped over.”

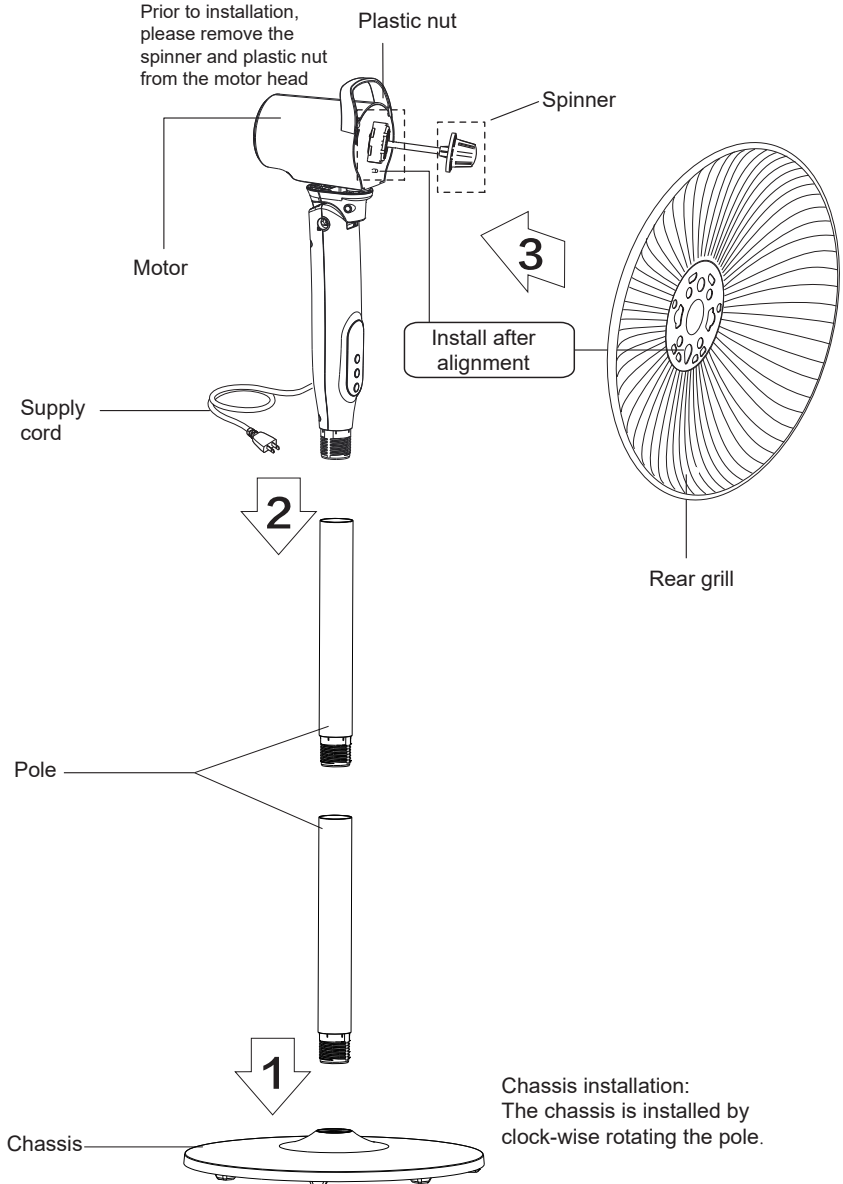


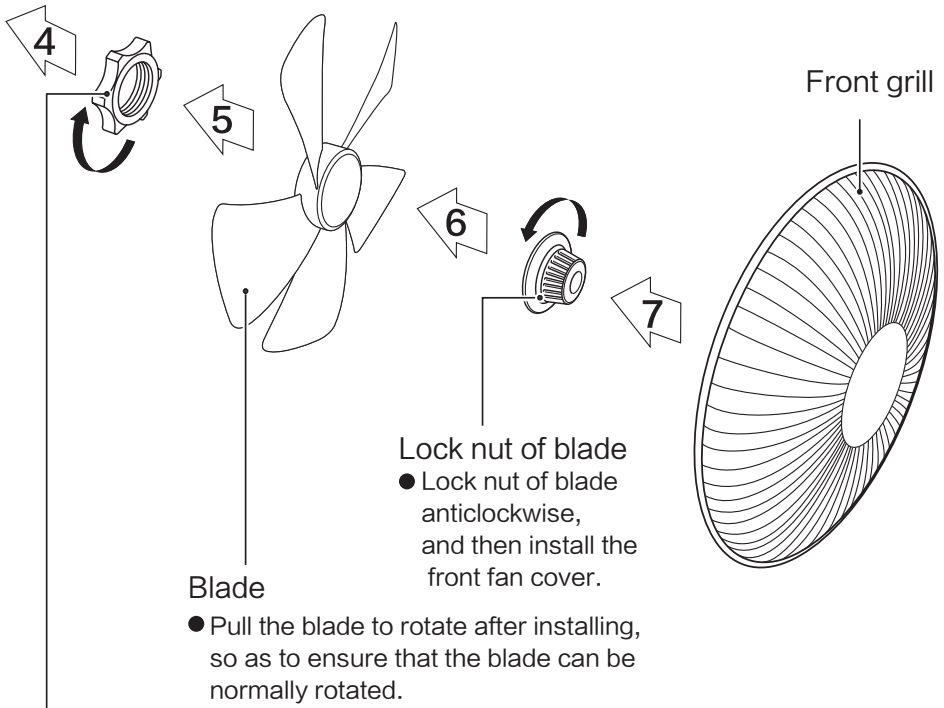
WARNING: Chemical Burn Hazard. Keep batteries away from children.

This product contains a lithium button/coin cell battery. If a new or used lithium button/coin cell battery is swallowed or enters the body, it can cause severe internal burns and can lead to death in as little as 2 hours. Always completely secure the battery compartment. If the battery compartment does not close securely, stop using the product, remove the batteries, and keep it away from children. If you think batteries might have been swallowed or placed inside any part of the body, seek immediate medical attention.

INSTALLATION INSTRUCTIONS

Name of components



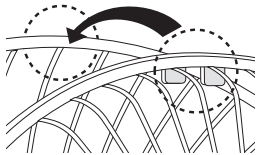


Lock nut of grill

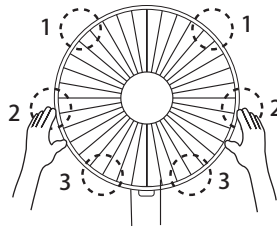
- Screw the lock nut of grill clockwise, and in the meantime, fix the rear grill.

Front and Rear Guard Installation

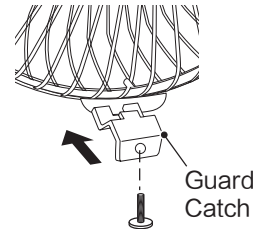
Align Catch of the Front Guard with the illustrated position of the Rear Guard.



Press guards sequentially with both hands.



Self-Catch Installation.



INSTRUCTIONS FOR USE

Instructions for key of remote controller



	On/off button
	Oscillating button
	"+" key
	"-" key
	Timer button

On/off button: Press it once, the fan will turn on and press it again to shut off.

Oscillating button:

Oscillating Function: After the fan starts, short press the button once to start oscillation. Press the button again to stop it at the desired direction.

Timer button

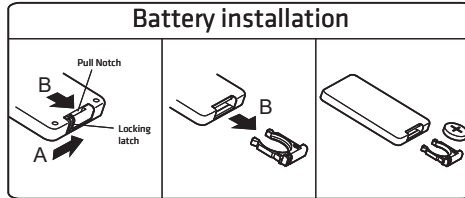
Setting a Starting Time: Plug in the unit. Press the timer button when the fan is off to activate the auto on timer. Then press the to select time from "0.5 to 12 hours" with an increment of 0.5 (The increment increases to 1 after the number reaches 10 hours). The starting time was set up after the number on screen switches to speed number and flashes. Then a clock signal will be on display. Then the fan will turn on automatically after the hours you set.

Setting a Stopping Time: After turning on the fan, press the timer button. Then press the to select time from "0.5 to 12 hours" with an increment of 0.5 (The increment increases to 1 after the number reaches 10 hours). The stopping time was set up after the number on screen flashes. Then the fan will turn off automatically after the hours you set.

Wind speed setting: Press the , and wind speed will change according to: shifts of 1-2-3-4-...-12 successively; press to change the wind speed 12-...-3-2-1 successively.

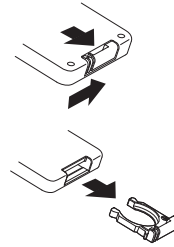
BATTERIES INSTRUCTIONS (included)

1. Please push locking latch in the direction of Arrow A, and pull out the pull notch in the direction of Arrow B at the same time.
2. Use 1 "CR2032" lithium battery (included)
3. Insert the batteries, making sure that the positive terminals are facing the proper way.
4. Replace the cover.



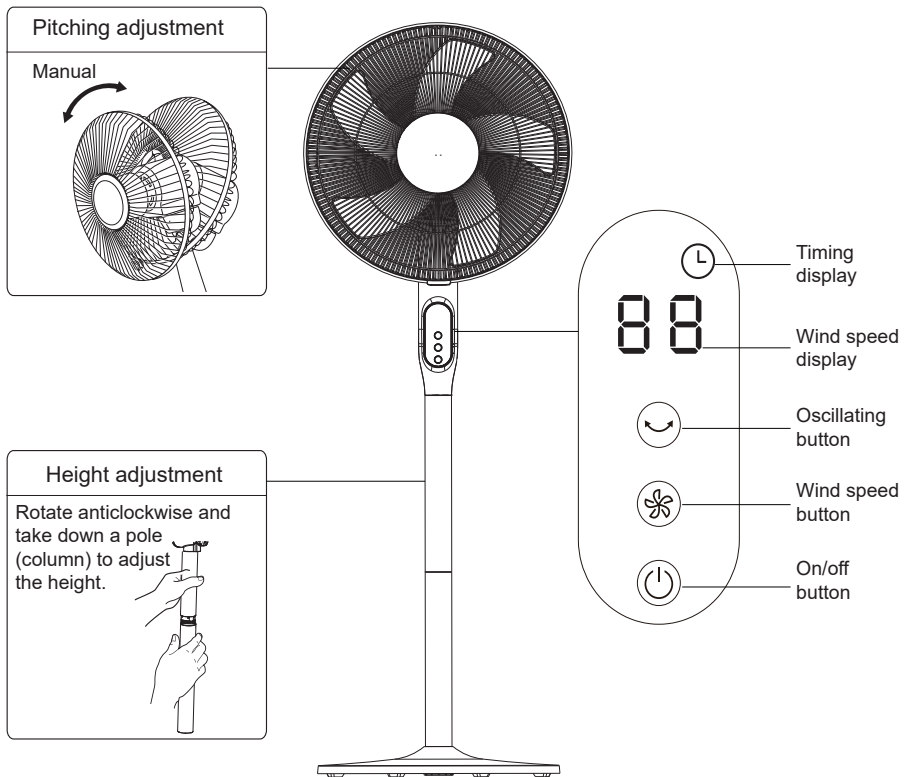
BATTERY WARNING

1. Do not dispose of batteries in fire, batteries may explode or leak.
2. Do not mix old and new batteries.
3. Do not mix alkaline, standard (carbon-zinc) or rechargeable (nickel-cadmium) batteries.
4. Non-rechargeable batteries are not to be recharged.
5. Batteries are to be inserted with the correct polarity.
6. Exhausted batteries are to be removed from the product.
7. The batteries must be removed from the remote controller before it is scrapped and that they are disposed of safely.



INSTRUCTIONS FOR USE

Instructions for operation of body



Oscillating button:

a. Oscillating Function: After the fan starts, short press the button once to start oscillation. Press the button again to stop it at the desired direction.

b. Setting a Starting Time: Plug in the unit. Press the Oscillating Button for 2s when the fan is off to activate the auto on timer. Then press the Oscillating Button to select time from "0.5 to 12 hours" with an increment of 0.5 (The increment increases to 1 after the number reaches 10 hours) The starting time was set up after the number on screen switches to speed number and flashes. Then a clock signal will be on display. Then the fan will turn on automatically after the hours you set.

c. Setting a Stopping Time: After turning on the fan, press the Oscillating Button for 2s into time setting. Then press the Oscillating Button to select time from "0.5 to 12 hours" with an increment of 0.5 (The increment increases to 1 after the number reaches 10 hours). The stopping time was set up after the number on screen flashes. Then the fan will turn off automatically after the hours you set.



Wind speed button: Short press the wind speed button, and wind speed will change according to: shifts of 1-2-3-4-...-12 successively; press the wind speed button for a long time to realize quick adjustment of wind speed

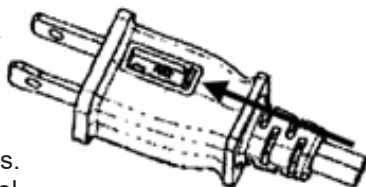


On/off button: Press it once, the fan will turn on and press it again to shut off.

Air volume:	1500 CFM
Oscillating angle:	85°
Tilt angle:	24°
Power:	35W

USER SERVICING INSTRUCTIONS

- Grasp plug and remove from the receptacle or other outlet device. Do not unplug by pulling on cord.
- Open fuse cover. Slide open fuse access cover on top of attachment plug towards blades.
- Remove fuse carefully. Insert the tip of your tool into fuse slot (close with the terminal), then prize the fuse gradually and slowly, but not overexert. If you feel tight, you can try it at several times and prize the fuse little by little. When one side of the fuse has been prized, then you can get the fuse out entirely.
- Risk of fire. Replace fuse only with 2.5 Amp, 125 Volt fuse.
- Close fuse cover. Slide closed the fuse access cover on top of attachment plug.
- Risk of fire. Do not replace attachment plug. Contains a safety device (fuse) that should not be removed. Discard product if the attachment plug is damaged.



Notice:

- When you replace the fuse, please don't operate suddenly or overexert, or else the product will be damage or cause accident.
- When you feel it hard to be operated, please make sure you have got the right way.

RULES FOR SAFE OPERATION

- Never insert fingers, pencils, or any other object through the grille when fan is running.
- Disconnect fan when moving from one location to another.
- Be sure fan is on a stable surface when operating to avoid overturning.
- DO NOT use fan in window, rain may create electrical hazard.
- Household use only.

CLEANING

1. Be sure to unplug from the electrical supply source before cleaning.
2. Plastic parts should be cleaned with mild soap and a damp cloth or sponge. Thoroughly to remove soap film with clean water.
3. Be sure not to make water or other liquid enter inside of motor.

Your Guarantee

If this product is found to be faulty as a result of faulty materials or workmanship within one year from date of purchase, it will be repaired free of charge.

This guarantee is subject to the following terms:

- Sunpentown must be notified of the fault.
- Proof of purchase must be presented to Sunpentown's nominated representative.
- The warranty will be void if the product is modified, misused or repaired by an unauthorized person.
- The warranty after repair will not be extended beyond the original one-year period.
- All replacement parts will be new or reconditioned.
- Parts, which are replaced, become the property of Sunpentown.
- The warranty applies for the use of the product in the USA only.

What is NOT COVERED:

- Warranty does not include freight charges.
- Damage due to installation error, product abuse and/or misuse.
- Incidental or consequential damage caused by possible defects with this product.
- Labor cost incurred for the installation and/or removal of a possible defective unit.
- Damage to product caused by improper power supply voltage, accident, fire, floods or acts of nature.
- Failure of product resulting from unauthorized modifications to the product.
- Improper installation or failure to perform the necessary maintenance.
- Normal wear and tear on parts or replacement of parts designed to be replaced.
- Damage to personal property from use of product.
- Replacement or repair of household fuses, circuit breakers, wiring or plumbing.

This GUARANTEE is in addition to your Statutory Rights

SUNPENTOWN INTERNATIONAL INC.
14625 Clark Ave. City of Industry, CA 91745
Tel: 800-330-0388
service@sunpentown.com
www.sunpentown.com