



WWW.SMITTYBILT.COM

Installation Instructions

Replacement Top
86-94 Suzuki Samurai

NOTE: Read instructions entirely before installing this product. This top is designed to be a snug/tight fit to reduce flapping and noise. It is recommended to install this product when temperatures are above 75 degrees. If temperatures are below this; the material can contract over an inch. Wrinkles from packaging will go away once the material relaxes. You must have the factory bow to install this part.

Parts Included	Qty
Top	1
Lock Nuts	2
Machine Screws	2

Parts Included	Qty
Tension Straps	2
Snaps with Screws	5

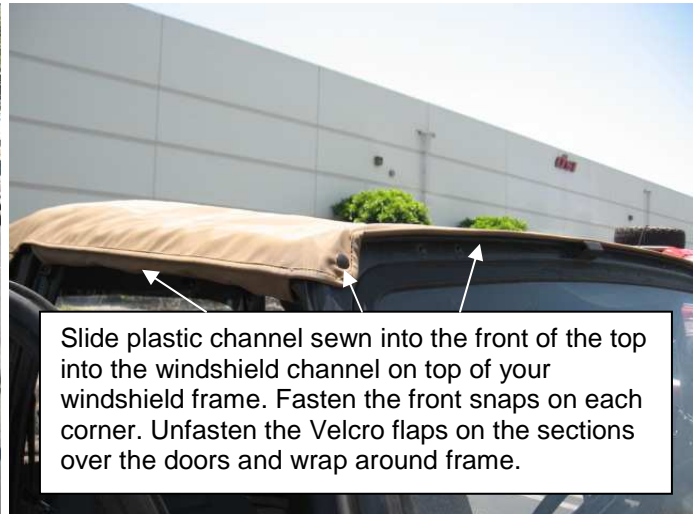
Step 1: Remove old top (if equipped)

Step 2: Using care place and spread new top over vehicle. (Fig A)

Step 3: Slide plastic channel sewn into the front of the top into the windshield channel on top of your windshield frame. Fasten the front snaps on each corner. (Fig B)



(Fig A)



Slide plastic channel sewn into the front of the top into the windshield channel on top of your windshield frame. Fasten the front snaps on each corner. Unfasten the Velcro flaps on the sections over the doors and wrap around frame.

(Fig B)

Step 4: Unfasten the Velcro flaps on the sections over the doors and wrap around frame.(Fig B)

For Technical Support/Warranty Information please call 310-762-9944

Smittybilt, 400 West Artesia Blvd, Compton, CA 90220



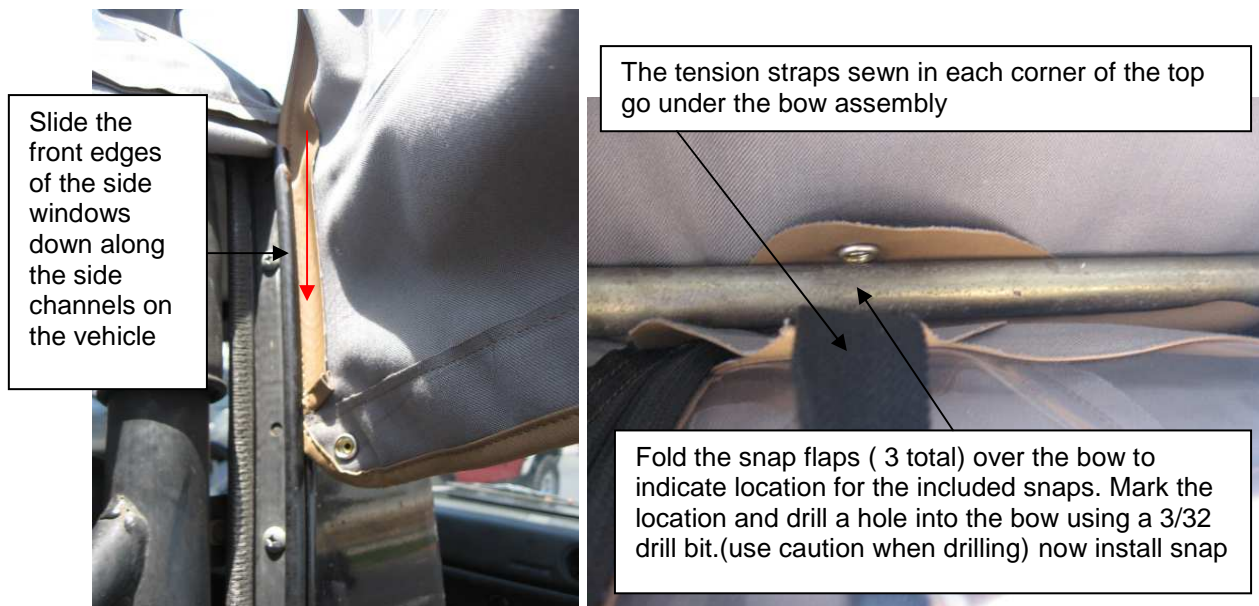
WWW.SMITTYBILT.COM

Installation Instructions

Replacement Top
86-94 Suzuki Samurai

Step 5: Slide the front edges of the side windows down along the side channels on the vehicle. (Fig C)

Step 6: With the top draped over the rear bow assembly, center it on the bow assembly. If your bow does not have snaps already attached you will need to install the included snaps. Use the snap flap as a guide to where the snaps should attach.(Fig D) Mark the location and drill a hole into the bow using a 3/32 drill bit.(use caution when drilling) now install snap.



(Fig C)

(Fig D)

Step 7: If the tension straps and brackets are not on your vehicle, install the two included with top. They mount on the inside lip of body tub just to the outside of the tailgate. (Fig E) Install by using the bracket as a template to mark the hole, then drill hole using a 7/32" drill bit. Secure bracket with included screw and nut. Unfasten the Velcro at the end of the newly installed tension strap and pull it up and slide it through the buckle end of the tension straps on the top.(Fig D)Then pull tightly down and fasten Velcro back together. (Do not pull excessively)

For Technical Support/Warranty Information please call 310-762-9944

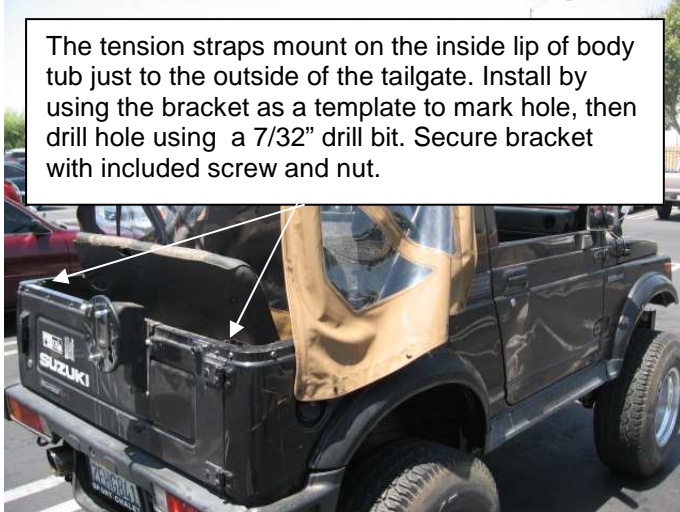
Smittybilt, 400 West Artesia Blvd, Compton, CA 90220



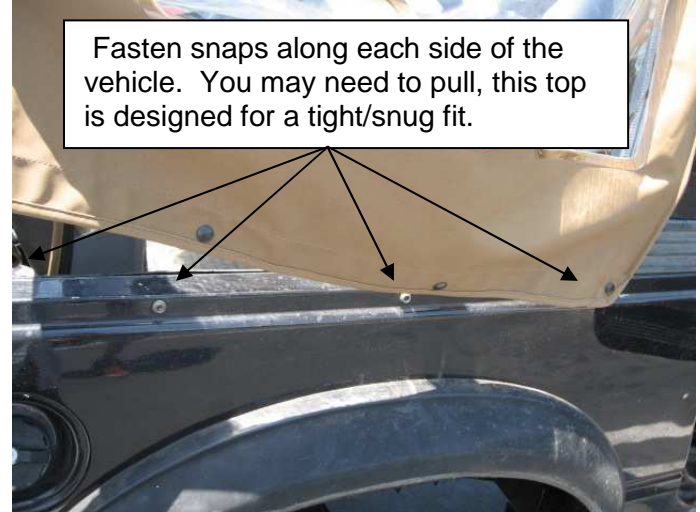
WWW.SMITTYBILT.COM

Installation Instructions

Replacement Top
86-94 Suzuki Samurai



(Fig E)



(Fig F)

Step 8: Now fasten snaps along each side of the vehicle. (Fig F) You may need to pull, this top is designed for a tight/snug fit.

Step 9: Fasten the rear snap-holes on the rear curtain over the studs on the rear of your vehicle. (Fig G)



(Fig G)



(Fig H)

For Technical Support/Warranty Information please call 310-762-9944

Smittybilt, 400 West Artesia Blvd, Compton, CA 90220



WWW.SMITTYBILT.COM

Installation Instructions

Replacement Top
86-94 Suzuki Samurai

Step 10: Make sure front over head door flaps are secured. (Fig B) Installation is now complete. (Fig I)

Note: If temperatures are not at the recommended degree you can try lying top on vehicle hood (not running) to warm top. Or using Extreme caution; a low heat type of heat gun.

Care and Maintenance

-**TOP**, The top should only be washed with soap and warm water. Do not use an abrasive cleaner or rag. Especially on the windows.

- **SNAPS**, Keep the snaps (if applicable) clean and a silicone lubrication will help prevent them from sticking together.

-**SEAMS**, If seeps happen to occur in seams they can be treated with a Scotchguard type of spray. Patches can also be applied on the inside of the top in the case of a rip or tear.

-**Zippers**, Keep zippers clean and apply a silicone lubricant to them to help prevent damaged to them and keep them operating smoothly. Zipper heads can also be repaired if they happen to spread apart by using pliers to gently squeeze the head back together

LIMITED WARRANTY

Smittybilt (The Company) warrants to the original purchaser of this product that should the product or any part thereof, under normal use and conditions, be proven defective in material or workmanship within the warranty period of 1 year from the date of purchase, such defect(s) will be repaired or replaced (At the Company's option) without charge for parts or labor. To obtain repair or replacement within the terms of the warranty, the product is to be delivered with proof of warranty coverage (e.g. dated bill of sale, receipt), specification of defect, freight pre-paid with Returns Good Authorization Number from Smittybilt to place of purchase. Items returned to Smittybilt Automotive without an Returns Authorization Number will be refused and returned to sender at the senders expense.

This warranty does not apply to any product or part thereof which, in the opinion of the Company, has suffered or been damaged through alteration, improper installation, mishandling, misuse, neglect accident or acts of nature. **THE EXTENT OF THE COMPANY'S LIABILITY UNDER THIS WARRANTY IS LIMITED TO THE REPAIR OR REPLACEMENT PROVIDED ABOVE AND, IN NO EVENT, SHALL THE COMPANY'S LIABILITY EXCEED THE PURCHASE PRICE PAID BY THE PURCHASER FOR THIS PRODUCT.**

This warranty is in lieu of all expressed warranties and liabilities. ANY IMPLIED WARRANTIES, INCLUDING ANY IMPLIED WARRANTY OF MERCHANTABILITY SHALL BE LIMITED TO THE DURATION OF THIS WRITTEN WARRANTY. ANY ACTION FOR BREACH OF ANY WARRANTY HEREUNDER INCLUDING ANY IMPLIED WARRANTY OF MERCHANTABILITY MUST BE BROUGHT WITHIN A PERIOD OF 90 DAYS FROM DATE OF ORIGINAL PURCHASE. IN NO CASE SHALL THE COMPANY BE LIABLE FOR ANY CONSEQUENTIAL OR INCIDENTAL DAMAGES FOR BREACH OF THIS OR ANY OTHER WARRANTY, EXPRESSED OR IMPLIED, WHATSOEVER. No person or representative is authorized to assume for the company any liability other than expressed herein in connection with the sale of this product. Some states do not allow limitations on how long an implied warranty lasts or the exclusion or limitation of incidental or consequential damage, therefore above limitations may not apply to you. This warranty gives the purchaser specific legal rights. The purchaser may have additional rights, which vary from state to state.

Some states do not allow limitations on how long an implied warranty lasts or the exclusion or limitation of incidental or consequential damage, therefore above limitations may not apply to you. This warranty gives the purchaser specific legal rights. The purchaser may have additional rights, which vary from state to state.

For Technical Support/Warranty Information please call 310-762-9944

Smittybilt, 400 West Artesia Blvd, Compton, CA 90220