

T-REX

Billet Grilles

51205

07-08 GMC

SIERRA

51205

07-08 GMC

SIERRA

UPPER CLASS SERIES GRILLE

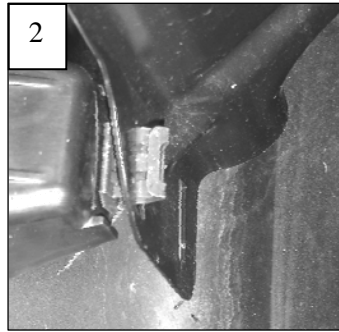
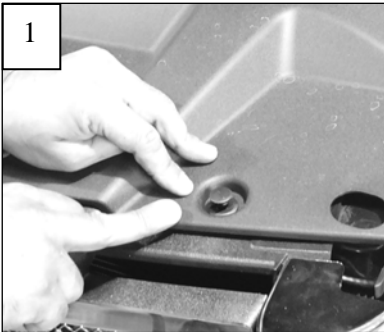
Recommended Tools:

Phillips / Slotted Screwdrivers
10mm Socket & Ratchet
Drill & 1/8" Bit
Die Grinder or Jig-Saw

Parts List / Hardware:

| | | | |
|---|----------------------|---|-------------|
| 1 | Mesh Grille | 2 | L Brackets |
| 7 | #10 X 1" Screws | 2 | #10 Washers |
| 7 | #10 Flat Nuts | | |
| 2 | 6-32 Nylon Lock Nuts | | |

Read and understand instructions before attempting installation



Step 1

Test fit the grilles into the opening. Remove plastic rivets securing the radiator cover; on top of the grille (1). Now remove the four 10mm bolts along the top of the grille. The grille has six metal clips that clip into the core support (2); two behind the GMC logo and four along the bottom. Pull the grille forward; use a slotted screwdriver to release the clips and remove the grille.



Step 2

This step cuts the bars from factory grille. Apply masking tape to the chrome or painted perimeter of the grille. The plastic bar along the top that bolts to the core support must be retained to install the grille. Do not cut this bar from the factory grille. Cut the four vertical bars 1/2" below the upper cross bar. Now cut the center cross bars from the grille; make three cuts on each end. Make your last four cuts along the bottom. The center bars securing the GMC logo will now separate from the grille (3).

Step 3

Use a die grinder or file to smooth any rough edges around the opening. Test fit the grille in place; smooth any remaining rough edges (4).

54205

54205



Step 4

Center the mesh grille into the factory grille surround (4). Make sure the grille is centered; mark the mounting holes in the mounting tabs to the chrome factory grille. Drill a 1/8" hole at each mark. Use the screws and flat nuts to secure the grille to the surround (5). Attach the short end of the L brackets to the two studs on top of the mesh grille using the 6-32 nuts and washers (snug the brackets but do not fully tighten).

Step 5

Re-install the grille assembly onto the vehicle; attach the clips along the bottom. Align the L brackets on top to the factory mounting 10mm bolt mounting holes in the center of the core support. Tighten the lock nuts securing the brackets to the grille. Re-install the grille and radiator cover onto the vehicle.

Thank you for purchasing your T-Rex billet grille. 1/24/07

