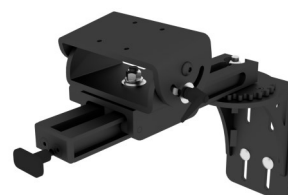
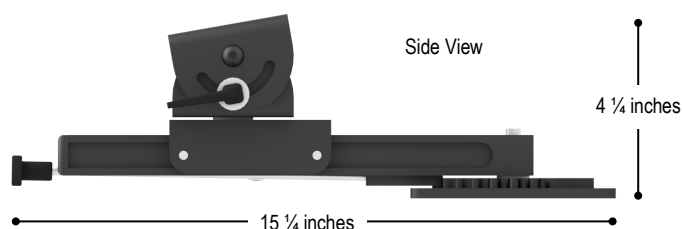


Feature	Benefit
Mounting versatility	<ul style="list-style-type: none"> • Can be bolted directly to bulkheads, pre-existing consoles, etc. using 5" x 5" base plate • Can be mounted on flat horizontal surfaces such as 'doghouse' dashboards • Can be mounted on vertical surfaces with "L" bracket • Clamp mounts available for installing on fork lift trucks, marine vessels, etc. • Height-specific risers (lifters) available
Ergonomics	<ul style="list-style-type: none"> • User-friendly design allows for a variety of motions and device positions • Swivel / swing capability (extension arm on pivot) over a 214° rotation - automatically locks in-place for optimal positioning of vehicle dock or cradle • User adjustable indexing slide movement - allows for capability to travel and lock along an 11 inch extension arm • Standard adjustable tilt mount positions vehicle dock or cradle at user-selectable positions
Durable, rugged construction	<ul style="list-style-type: none"> • Boom Arm is precision-machined from solid aluminum; unit remains solid and does not rattle / shake in extreme road conditions • Structural components are smoothed through CNC machining; rounded corners and contoured edges offer optimal safety • Finished in high quality black epoxy powder coat for durability • Aluminum offers corrosion resistance and vibration reduction



Boom Arm with "L" Bracket
for mounting on vertical surfaces

Dimensions & Weight	
Width	5.0" (12.70cm)
Length (from back of base plate to handle)	15.25 (38.73 cm)
Height (with standard adjustable tilt)	4.25" (10.79 cm)
Weight	4.9 lbs. (2.22 kg)

