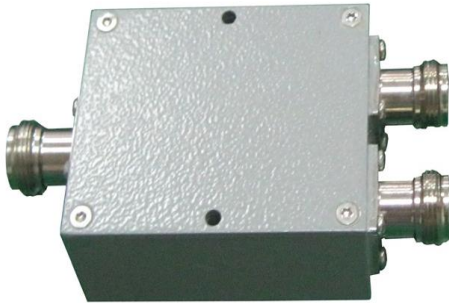


700-2700 MHz 2-Way High Power Splitter with N Female Connector



Ventev splitters are designed to divide or “split” the signal. The splitters are perfect for applications that require coverage of two different areas with a single access point or bridge. The rugged design and small footprint make Ventev splitters ideal for most bridging and LAN applications.

SPECIFICATIONS

Sku	323511
Model Number	RMFLT-2-M3-NJ-PR
General Frequency	700-2700 MHz
Splitting Power	50:50
Insertion Loss	≤ 3.5 dB
Isolation	≥ 20 dB
VSWR	≤ 1.2
Impedance	50 Ohms
Maximum Power	50 W
Connector	N Female
Operating Temperature Range	-22° to 140° F
Humidity	5% - 95%
Dimensions	3.7 x 3.6 x 0.8 in
Weight	0.33 lb

FEATURES AND BENEFITS

- Compact, lightweight design
- Easy to mount
- High isolation, low insertion loss and minimal VSWR
- N-Style Female connectors included
- Excellent value—Superior performance at a competitive price

700-2700 MHz 2-Way High Power Splitter with N Female Connector

Technical Drawing

