



# UXP-NM-12L



## UXP-NM-12L DATA SHEET 7-16 N Male Connector for LS LHF12D Cable



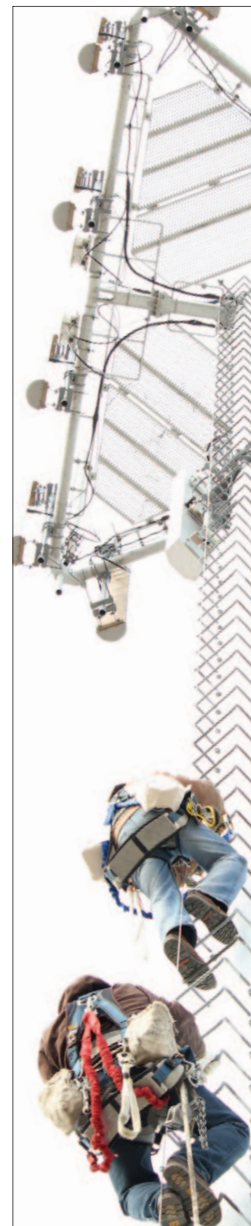
Mechanical	Specification	Comment
Pull Force Combined	> 200 lbs   .89 Kn or cable fails	
Cable/Connector Torsional Torque	5 ft. lbs.   6.7 Nm	Cable limited
Interface Durability	500 Cycles	

Electrical	Specification	Comment
Frequency Range	DC to 6 GHz	
Impedance	50Ω Nominal	
Average Return Loss (VSWR) DTF	> -40dB (1.02) 0-1 GHz, > -36dB (1.03) 1-2 GHz, -32dB (1.05) 2-4 GHz, -28dB (1.08) 4-6 GHz	As per Anatel 75
Insertion Loss	< .1√F(GHz)	
3rd Order IMD	-153 dBc minimum, -160 dBc typical	As per IEC 62037-2, -3
Voltage Withstand	> 2.5 kV	
Shielding Effectiveness	< -120dB	0-1 GHz
Insulation Resistance	5GΩ initial, 200MΩ after conditioning	

Environmental	Specification	Comment
Operating Temperature/ Storage Temperature	-40°C to +65°C / -55°C to +85°C	
Interface Moisture	No leakage, mated or unmated > 1.0 Bar	
Corrosion Resistance	1000 Hours	
H.A.L.T.	40 Hours	

General	Specification	Comment
Cable Supported	LS LHF 12D	
Weight	0.261 lbs.   118.4g	
WPS Weather Protection		
Length	2.455"   62.4mm	
Outer Diameter	1.040"   26.4mm	
Hex Width	.750"   19mm	

Tools	Specification	Comment
Cable Preparation	SP-1/2-LH4D	Bit "U", all cables
Connector Compression	HCG-FRAMESET-1/2, HCG-CC	Insert B
Torque Wrench	TW1412	14 in. lbs.   2.3 Nm



Mobile-enabled:  
ppcqr.com



Scan for more info.