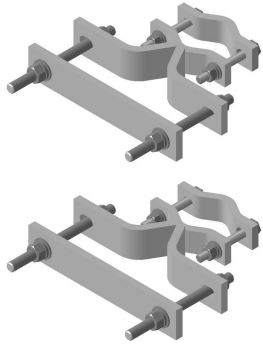


AD-P60-SCP



Boom Gate Clamp Set, 4-1/2 in to 12 in, 60° angle legs

Product Classification

Product Type Clamp set

General Specifications

Mounting Adapter clamp kit

Tower Taper Tapered

Dimensions

Height 50.8 mm | 2 in

Width 203.2 mm | 8 in

Length 304.8 mm | 12 in

Mounting Diameter, maximum 165.1 mm | 6.5 in

Mounting Diameter, minimum 0 mm | 0 in

Material Specifications

Material Type Hot dip galvanized steel

Packaging and Weights

Included Clamp halves | Threaded rod

Packaging quantity 2

Weight, net 11.3 kg | 24.912 lb

Regulatory Compliance/Certifications

Agency

ISO 9001:2015

Classification

Designed, manufactured and/or distributed under this quality management system

AD-P60-SCP

