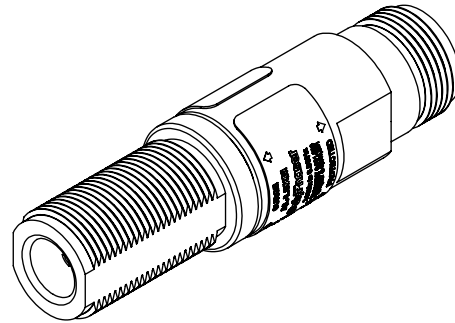


REVISIONS				
REV.	DESCRIPTION	ECN	DATE	APPROVED
D	REFER TO ECN	11900		
E	CHANGE TO IP67	11988	9/5/2013	



### MAXIMUM CHARACTERISTICS

**APPLICATION:**  
BULKHEAD MOUNT/ALUMINUM CONSTRUCTION  
WEATHERPROOF WHEN INSTALLED

**SURGE:**  
10kA IEC 61000-4-5 8/20μs WAVEFORM

**FREQUENCY RANGES:**  
2.0GHz TO 6.0GHz

**VSWR:**  
≤1.2 TO 1 TYPICAL (≤1.3 TO 1 MAX.)

**INSERTION LOSS:**  
≤0.1dB TYPICAL (≤0.2dB MAX.)

**RETURN LOSS:**  
≥20dB TYPICAL

**CONTINUOUS POWER:**  
10W

**LET THROUGH VOLTAGE:**  
±3 VOLTS FOR 3kA @ 8/20μs WAVEFORM

**THROUGHPUT ENERGY:**  
≤0.5μJ FOR 3kA @ 8/20μs WAVEFORM

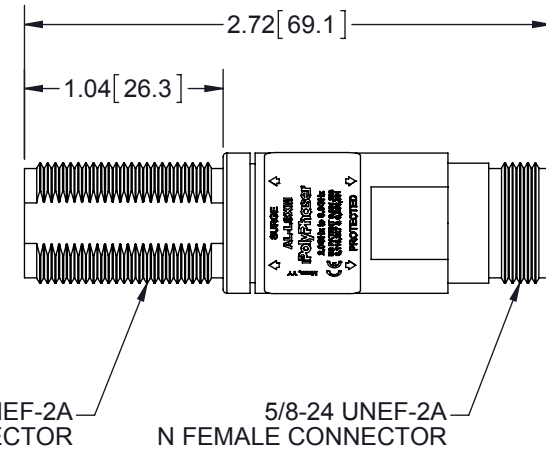
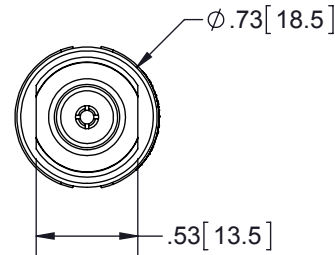
**TEMPERATURE:**  
-40°C TO +85°C STORAGE/OPERATING

**VIBRATION:**  
1G AT 5Hz TO 100Hz

**ENVIRONMENTAL:**  
MEETS IEC 60529 IP67 (E)  
MEETS BELLCORE #TA-NWT-000487  
PROCEDURE 4.11, WIND DRIVEN (120MPH)  
RAIN INTRUSION TEST

**MATERIAL:**  
BODY: 7075 ALUMINUM  
CENTER PINS: BRASS OR BERYLLIUM COPPER  
GOLD PLATED PER MIL-G-45204  
TYPE II, GRADE C, CLASS I

**CE COMPLIANT**  
**RoHS COMPLIANT**



5/8-24 UNEF-2A  
ELONGATED N FEMALE CONNECTOR

5/8-24 UNEF-2A  
N FEMALE CONNECTOR

CUSTOMER APPROVAL: \_\_\_\_\_ DATE: \_\_\_\_\_

ALL DIMENSIONS SHOWN ARE FOR REFERENCE ONLY.

<small>UNLESS OTHERWISE SPECIFIED LEADING DIMENSIONS ARE INCHES DIMENSIONS IN [ ] ARE MILLIMETERS</small> <b>TOLERANCES:</b> FRACTIONS=± 1/32 .XX=± .03 ANGLES=± 1° .XXX=± .010	DRAWN <b>R. DUNNING</b> ENG APPD <b>J. JONES</b>	DATE 5/16/03			SHEET 1 OF 1
	PRODUCT MGR <b>S. DOTTER</b> MARKETING APPD <b>L. JACQUES</b>	DATE 5/16/03			SCALE 1:1
<small>NOTICE: THE INFORMATION AND DESIGN IN THIS DOCUMENT IS THE PROPERTY OF POLYPHASER CORPORATION. ALL RIGHTS RESERVED.</small>	PROJECT NO.	TITLE <b>LOOP FILTER 2-6GHz 10W</b> CUSTOMER SPECIFICATION			
<small>THIRD-ANGLE PROJECTION</small> 	DOCUMENT NAME <b>AL-LSXM-C</b>	SIZE <b>A</b>	CAGE <b>61114</b>	PROD CAT <b>RFP</b>	PART NUMBER <b>AL-LSXM</b>
					REV <b>E</b>

THESE COMMODITIES, TECHNOLOGY OR SOFTWARE WERE EXPORTED FROM THE UNITED STATES IN ACCORDANCE WITH THE EXPORT ADMINISTRATION REGULATIONS. DIVERSION CONTRARY TO U.S. LAW PROHIBITED.