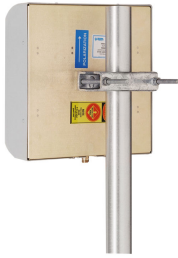


DB992HG28N-B



1-port small cell antenna, 1710–2490 MHz, 30° HPBW, fixed electrical tilt

- High gain array ideal for point-to-point and repeater applications
- Unique mounts allow vertical or horizontal polarization

General Specifications

Antenna Type	Small Cell
Band	Single band
Color	Light gray
Grounding Type	RF connector inner conductor and body grounded to reflector and mounting bracket
Performance Note	Outdoor usage
Radome Material	ABS, UV resistant
Radiator Material	Aluminum
RF Connector Interface	N Female
RF Connector Location	Bottom
RF Connector Quantity, high band	1
RF Connector Quantity, total	1

Dimensions

Width	311 mm 12.244 in
Length	311 mm 12.244 in
Depth	124 mm 4.882 in

Electrical Specifications

Impedance	50 ohm
Operating Frequency Band	1710 – 2490 MHz
Polarization	Horizontal Vertical Vertical

Electrical Specifications

Frequency Band, MHz	1710–2170	2170–2490
Gain, dBi	16	16

DB992HG28N-B

Beamwidth, Horizontal, degrees	28	28
Beamwidth, Vertical, degrees	30	30
Beam Tilt, degrees	0	0
USLS, typical, dB	15	15
Front-to-Back Ratio at 180°, dB	30	30
VSWR Return loss, dB	1.4 15.6	1.9 10.1
PIM, 3rd Order, 2 x 10 W, dBc	-150	-150
Input Power per Port, maximum, watts	100	100

Mechanical Specifications

Wind Loading at Velocity, maximum	156.0 N @ 150 km/h 35.1 lbf @ 150 km/h
Wind Speed, maximum	201 km/h 124.896 mph

Packaging and Weights

Net Weight, without mounting kit	1.3 kg 2.866 lb
---	-------------------

Regulatory Compliance/Certifications

Agency	Classification
CE	Compliant with the relevant CE product directives
CHINA-ROHS	Below maximum concentration value
ISO 9001:2015	Designed, manufactured and/or distributed under this quality management system
REACH-SVHC	Compliant as per SVHC revision on www.commscope.com/ProductCompliance
ROHS	Compliant



Included Products

DB390 — Pipe Mounting Kit for 2.4 - 4.5 in (60 - 115 mm) OD round members. Use for narrow panel antennas. Includes two pipe mounts.

* Footnotes

Performance Note Severe environmental conditions may degrade optimum performance