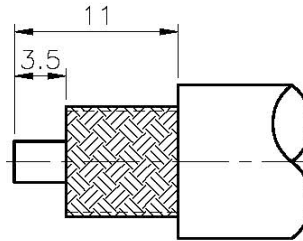
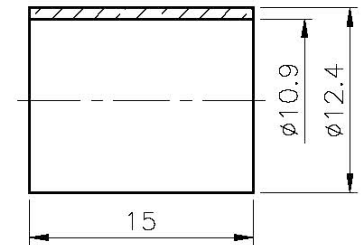
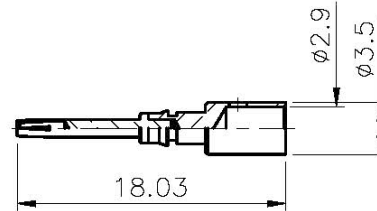
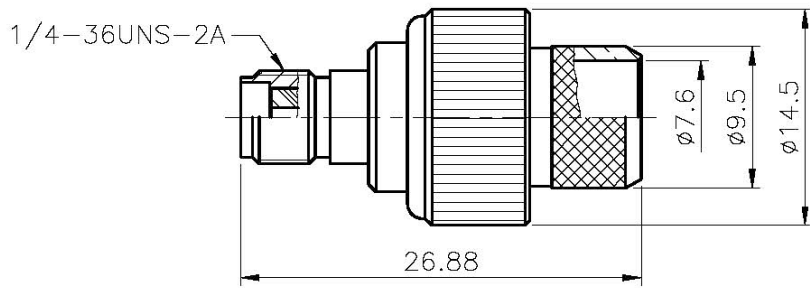


REVISIONS

| ISS | SYMBOL | DESCRIPTION\DATE |
|-----|--------|------------------|
| | | |

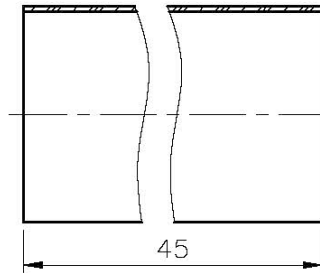


RECOMMENDED
CABLE STRIPPING DIM'S



NOTES: FINISH (PLATING THICKNESS IN MICRO-INCHES)

1. BRASS PER QQ-B-626
2. NICKEL PL 70 MIN THICK OVER COPPER STRIKE
3. GOLD PL 30 MIN OVER NICKEL PL 70 MIN THICK OVER COPPER STRIKE
4. TEFLON MIL-P-19468
5. BERYLLIUM COPPER PER QQ-C-530
6. BRASS JIS H 3250, C 2700



1. CRIMPED FERRULE
HEX CRIMP SIZE .429" (10.9mm)
2. CRIMPED CONTACT PIN
HEX CRIMP SIZE .118" (3mm)
OR SOLDER

TESSCO

| NO. | DESCRIPTION | MATERIAL | FINISH | Q'TY | DRAWING NO. | SCALE | 2/1 | ISSUE | PART NO. | TITLE | | |
|-----|------------------|----------|--------|------|-------------|---|-----|-------|------------|---------------------|--|----------------------------|
| | HEAT SHRINK TUBE | | BLACK | | | DIMENSIONS ARE IN MILLIMETERS UNLESS OTHERWISE SPECIFIED TOLERANCES 0.5~6 = ±0.2 >6~30 = ±0.4 >30~120 = ±0.6 >120~315 = ±1 >315~1000 = ±1.6 ANGLES = ±5° | | | CON-17-400 | TerraWave Solutions | | |
| | FERRULE | NOTE 6 | NOTE 2 | | | | | | APPROVED | DATE | | TITLE |
| | CONTACT PIN | NOTE 1 | NOTE 3 | | | | | | CHECKED | DATE | | SMA Jack for TWS 400 Cable |
| | CONTACT PIN | NOTE 5 | NOTE 3 | | | | | | DRAWN | DATE | | DRAWING NO. |
| | BRAID HOLDER | NOTE 1 | NOTE 2 | | | | | | | | | FILE NO. |
| | INSULATOR | NOTE 4 | WHITE | | | | | | | | | |