



PEAR™ S5591i

Outdoor/In-Building Directional Antenna

[380-470 / 698-960 / 1710-2700 MHz]

DESCRIPTION:

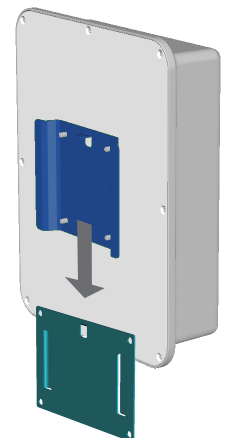
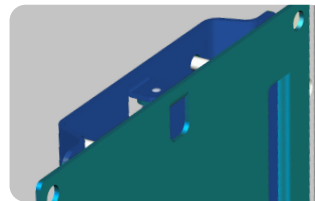
Directional wall mount antenna for outdoor and in-building applications such as DAS. The antenna is vertically polarized and operates at 380-2700 MHz covering also the public safety frequency for TETRA.

Electrical Specifications					
Frequency Band	380-470 MHz	698-790 MHz	790-960 MHz	1710-2180 MHz	2180-2700 MHz
Polarization	Vertical				
Input Connector Type	1x N-Type (Female) with pigtail cable (12"/30cm length)				
Impedance	50 Ω				
VSWR	< 3.7:1	< 2.5:1		< 1.8:1	
Gain	2.0 dBi	5 dBi		7.0 dBi	
Vertical Beamwidth	>120°	80°	110°	70°	70°
Horizontal Beamwidth	> 120°	100°	100°	75°	75°
Peak PIM @ 2x 43 dBm	< -150 dBc				
Input Power	50 W at ambient temperature of 122° F (50° C)				

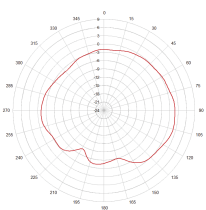
Mechanical Specifications	
Operating Temperature	-67° to 158 °F (-55° to +70°C)
Environmental Conditions	Outdoor or Indoor
Antenna Weight	1.3 lbs (600g)
Radome Dimensions (H x W x D)	10.1" x 7.9" x 2.5" (256 x 200 x 65mm)
Flammability rating	UL 94-V0
Outdoor Ingress Protection	IP65
RoHS	compliant
Radome Color	RAL 9010 (white)*

MOUNTING INFORMATION:

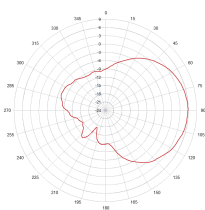
After affixing the mounting plate to the wall, then mount the Antenna onto the mounting plate by sliding it into the slots and securing it with the provided fasteners



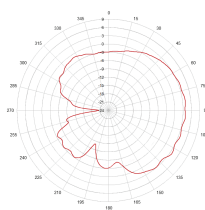
* Radome can be painted with recommended paint "Krylon Fusion for Plastic".



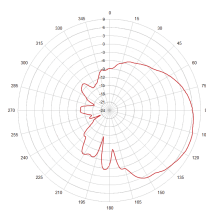
460 MHz



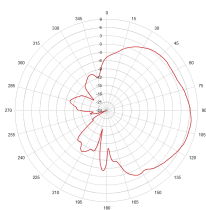
710 MHz



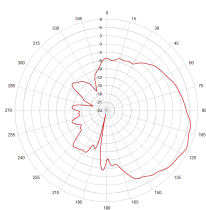
820 MHz



1730 MHz



2070 MHz



2500 MHz

