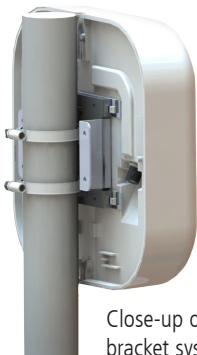


# 698-960 MHz/1710-2700 MHz Pole Mount Low-PIM Directional Panel Antenna PAS69278P



Close-up of connector and bracket system

## MULTI-BAND LOW-PIM DIRECTIONAL PANEL ANTENNA

The PAS69278 antenna is a wide-band dual-port panel antenna with slant 45 polarization that covers the domestic LTE700/Cellular/PCS/AWS/MDS and global GSM900/GSM1800/UMTS/LTE2600 bands. The antenna is ideal for both indoor and outdoor applications. It includes a UV-stable radome enclosure that provides years of use without degradation to either the mechanical properties or aesthetics.

### FEATURES RoHS

- Applicable for both 3G/4G solutions
- Domestic LTE 700 band and Global LTE 2600 band
- WiMax 2300/2500 bands
- Domestic Cellular and Global GSM
- Weatherproof UV stable radome
- Low Passive Intermodulation
- Conformance to RoHS

### APPLICATIONS

- In-building Wireless Networks
- 802.11 a/b/g/n
- iDAS/oDAS
- Wireless Terminal, Point-of-Sale, Machine-to-Machine
- Automatic meter reading and home security

### ANTENNA PATTERNS



Americas: +1.847.839.6907  
IAS-AmericasEastSales@lairdtech.com  
Europe: +44.1628.858941  
IAS-EUSales@lairdtech.com  
Asia: ++86.21.5855.0827.127  
IAS-AsiaSales@lairdtech.com  
[www.lairdtech.com](http://www.lairdtech.com)

ANT-DS-PAS69278P 1213

Any information furnished by Laird and its agents is believed to be accurate and reliable. All specifications are subject to change without notice. Responsibility for the use and application of Laird materials rests with the end user, since Laird and its agents cannot be aware of all potential uses. Laird makes no warranties as to the fitness, merchantability or suitability of any Laird materials or products for any specific or general uses. Laird, Laird Technologies, Inc or any of its affiliates or agents shall not be liable for incidental or consequential damages of any kind. All Laird products are sold pursuant to the Laird Technologies' Terms and Conditions of sale in effect from time to time, a copy of which will be furnished upon request. © Copyright 2013 Laird Technologies, Inc. All Rights Reserved. Laird, Laird Technologies, the Laird Technologies Logo, and other marks are trademarks or registered trademarks of Laird Technologies, Inc. or an affiliate company thereof. Other product or service names may be the property of third parties. Nothing herein provides a license under any Laird or any third party intellectual property rights.

	Port 1/Port 2							
	700	850	900	1800	1900	2100	2300	2600
Frequency Bands, MHz	700	850	900	1800	1900	2100	2300	2600
Peak Gain, dBi (Typ)	8.7	9.0	9.8	7.5	8.5	8.4	9.5	9.7
Peak Gain, dBi (Max)	9.1	9.7	10.4	8.5	9.1	9.1	10.1	10.0
VSWR (Typ)	<2.0:1	<1.9:1	<1.7:1	<1.6:1	<1.5:1	<1.5:1	<1.6:1	<1.8:1
Isolation, dB (Typ)	<-38	<-40	<-40	<-30	<-30	<-30	<-30	<-38
3 dB Beamwidth, Vertical Plane	58° to 67°			53° to 77°				
3 dB Beamwidth, Horizontal Plane	58° to 68°			52° to 78°				
PIM, 3rd Order, 2 x 20W (Typ)	< -151 dBc			< -153 dBc				
CPR at Boresight (Typ)	25 dB			23 dB				
CPR at Boresight (Min)	25 dB			17 dB				
F/B Ratio, Co-pol								21 dB
Isolation, dB								<-30 (Typ), -28 (min)
PIM, 3rd Order, 2 x 20W (Max)								< -150 dBc
Maximum VSWR								2.0:1
Nominal Impedance								50 Ω
Max Input Power per port								50 Watts
Polarization								Slant ± 45°
RF Connector								Dual Type N female
Radome & Base Color								White, color code (SABIC) WH9B034
Flammability Rating (Radome)								UL 94V0 Materials
Dimensions (diameter x height)								295 x 295 x 82 mm
Weight								1.46 kg
Storage Temperature (°C)								-40°C to +85°C
Operational Temperature (°C)								-30°C to +70°C
Environmental Conditions								ETSI EN300 019-2-4, class 4.1E.
Wind Rating								150 km/hr (93 mph)
Ingress Protection								IP55
Material Substance Compliance								RoHS Compliant

MODEL NUMBER	CABLE LENGTH	CONNECTOR
PAS69278P-FNF	NA (Direct Connect)	Dual Type N-female
PAS69278P-91NF	Dual 91 cm (36")	Dual Type N-female