

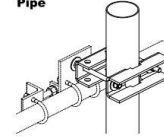


Sway Bar / Tower Universal Connecting Kit

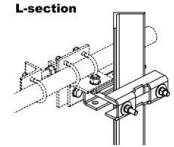
**Product Description**

This connecting kit allows to attach the sway bar on any kind of support (pipes or L-sections) without needing to drill holes in the structure.

OPTION 1  
Pipe



OPTION 2  
L-section



**Features/Benefits**

- The RFS universal fixation kit SMA-SKO-UNIVERSAL-L (aka SMA-SKO-UNIV-L) allows to attach the sway bars of RFS 6ft through 15ft antennas onto towers, without drilling holes.
- This kit has been engineered and dimensioned to match all scenarios that occur in the field (pipes and L-sections).
- The kit is made of materials (stainless steel and hot-dip galvanized steel) with proven mechanical and environmental performance.
- Easy to install, less bulky, robust, this kit contributes to a perfect installation of RFS 6ft through 15ft antennas, from both a safety and a sustainability perspective.

**Technical Specifications**

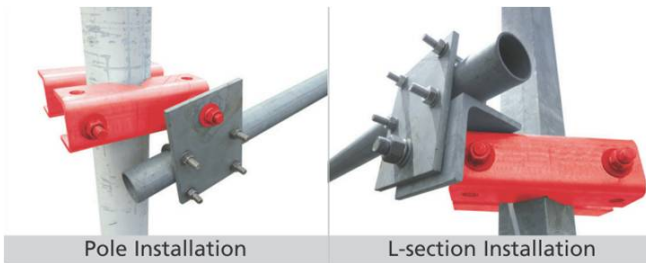
Product Type	Sway Bar Fixation Hardware
Kit Type	Sway Bar / Tower Fixation Kit
Diameter, m (ft)	1.8 (6), 2.4 (8), 3 (10), 3.7 (12), 4.6 (15)
Material	Stainless steel & Hot-dip galvanised steel

**Notes**

Tower pipe compatibility : Ø60mm up to Ø114mm. Tower L-section compatibility : L 60mm x 60mm up to L 110mm x 110mm. Compatible with RFS sway bar models in following diameters : Ø60mm. Approximative weight : 5.6kg. Only the red marked parts are delivered with the kit (see picture).

**Other Documentation**

Sway bar / tower fixation installation kit: [NMT758-00e.pdf](#)



Pole Installation

L-section Installation

All information contained in the present datasheet is subject to confirmation at time of ordering

<b>RFS The Clear Choice ®</b>	<b>SMA-SKO-UNIVERSAL-L // SMA-SKO-UNIV-L</b>	Rev: A / 02.Oct.2012	Print Date: 31.07.2014
-------------------------------	--	----------------------	------------------------