

Installation instructions KM440 seat into a Case 580 Backhoe

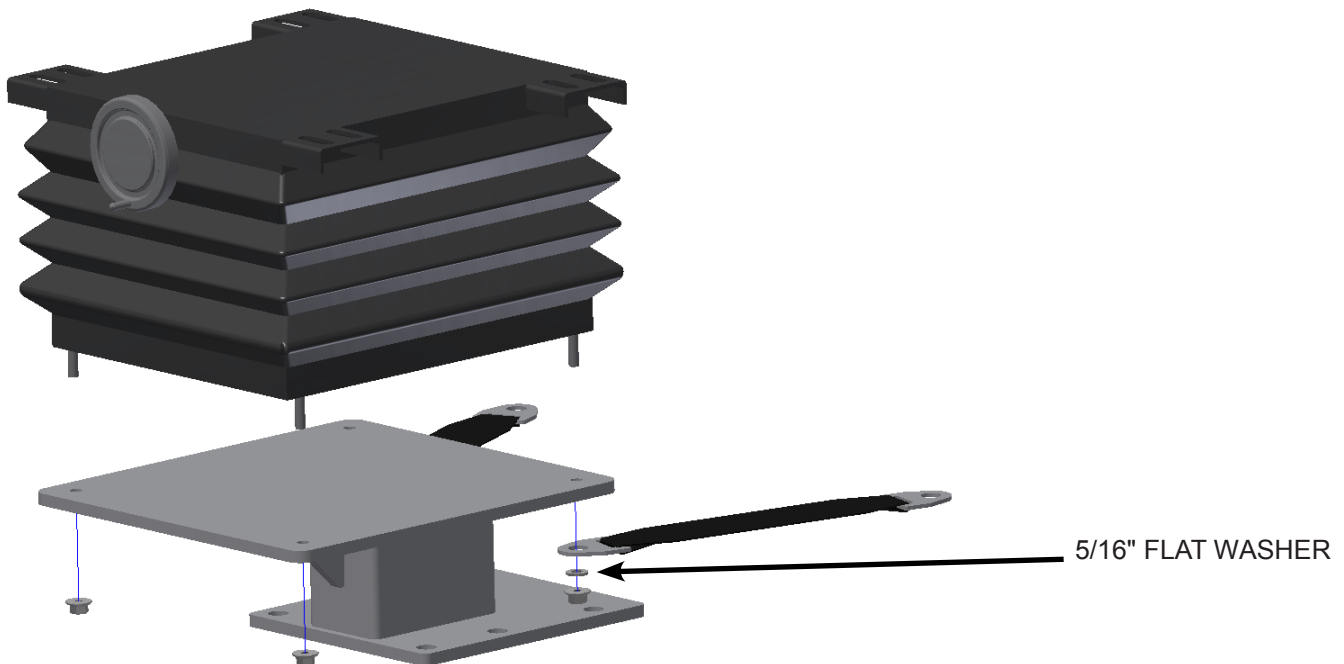


5/16" FLAT WASHERS



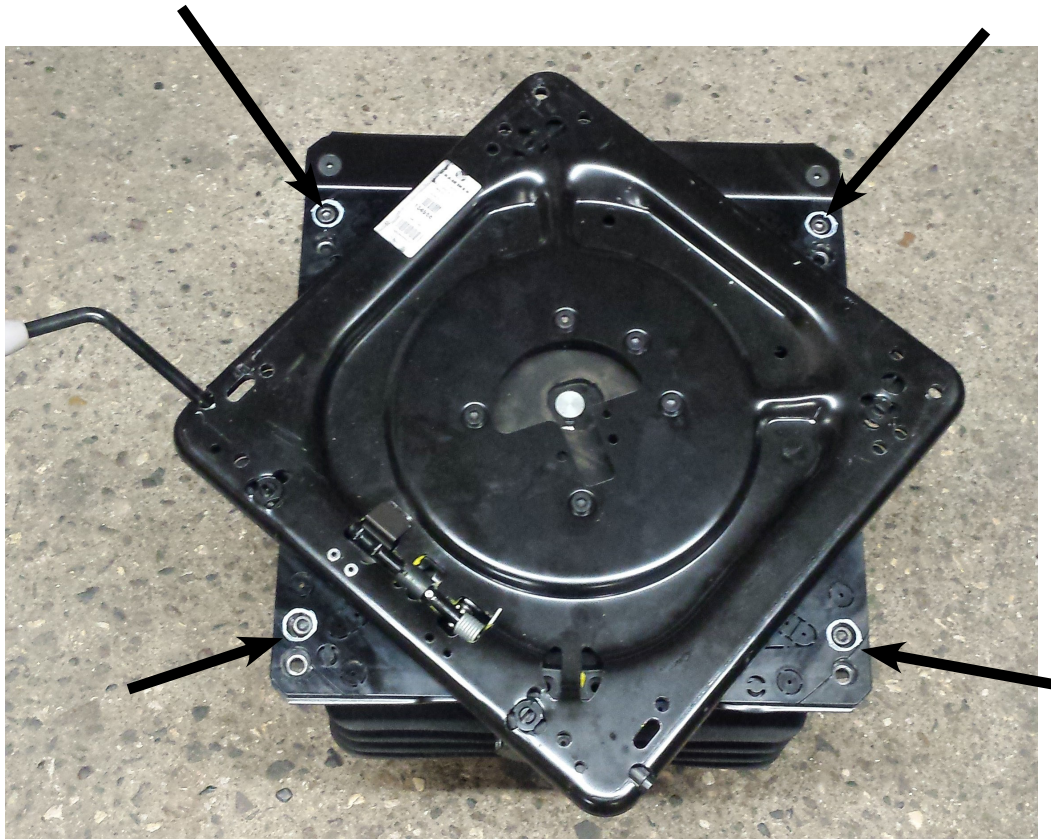
5/16"-18 FLANGE NUTS

1. Remove the old seat, suspension and PED. Keep the nuts used to fasten the seat to the cab, these will be used to fasten the new seat and suspension.
2. Remove the slide rails from the bottom of the new seat and discard. Keep the oversized washers to be used later.
3. Place the suspension onto the PED, the suspension should be offset forward. Fasten the suspension and tethers to the PED using two 5/16" flat washers and 5/16"-18 Flange nuts to fasten the suspension down. **HAND TIGHTEN NUTS ONLY.**



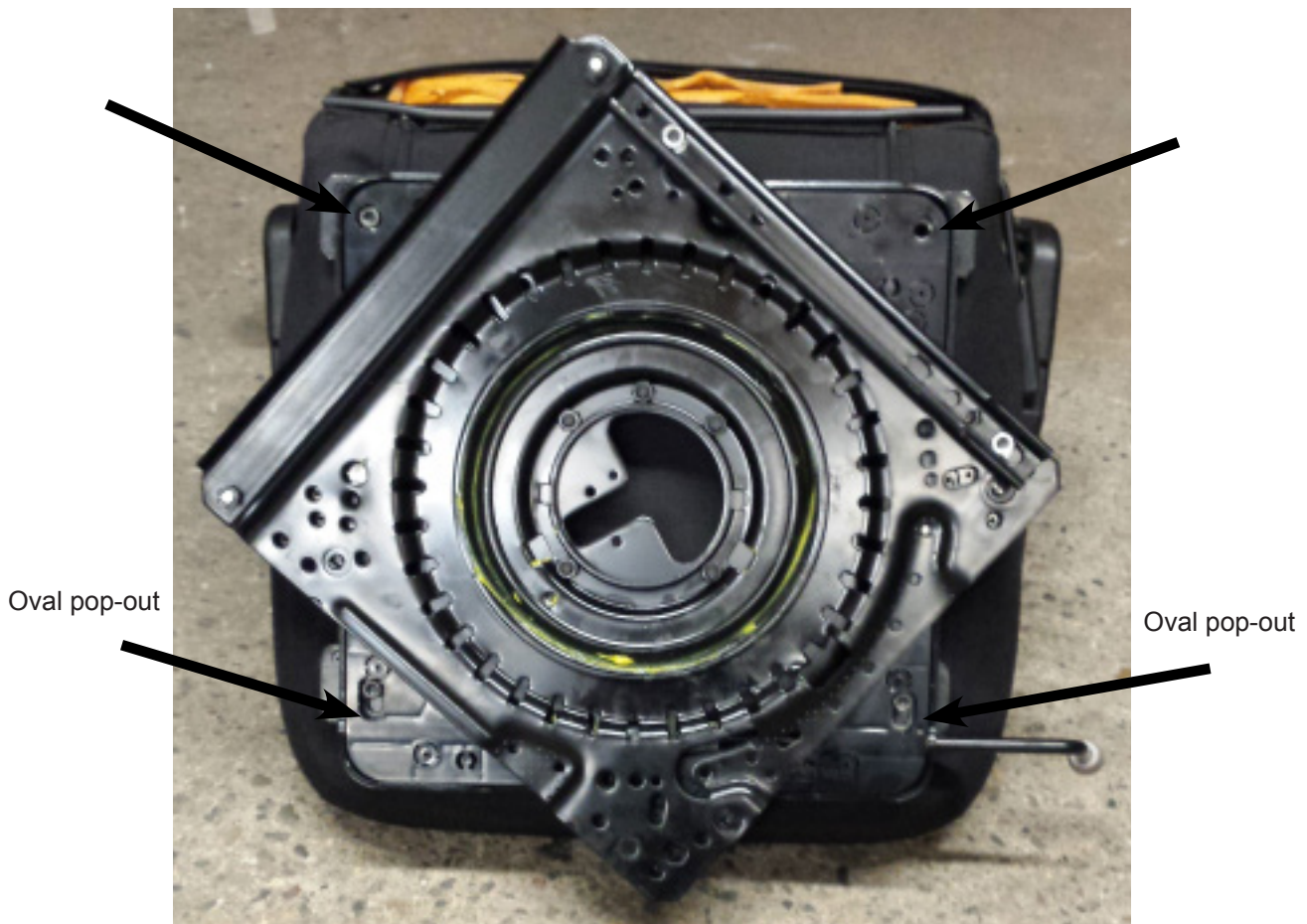
Instructions for KM440 seat into a Case 580 Backhoe

4. Turn the swivel roughly 45 degrees to allow access to the underside of the bottom half of the swivel. Pop out the precut pop-outs marked on the image below using a utility knife or similar.

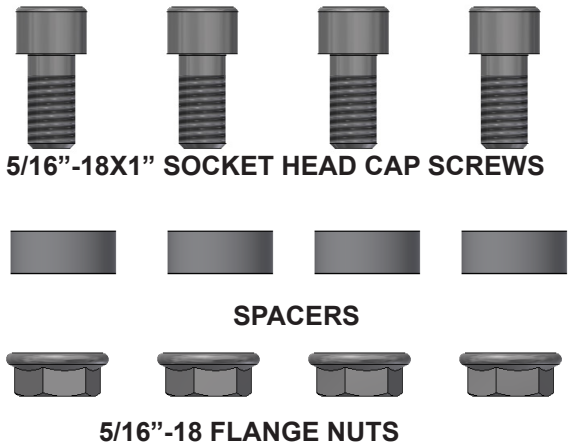


Instructions for KM440 seat into a Case 580 Backhoe

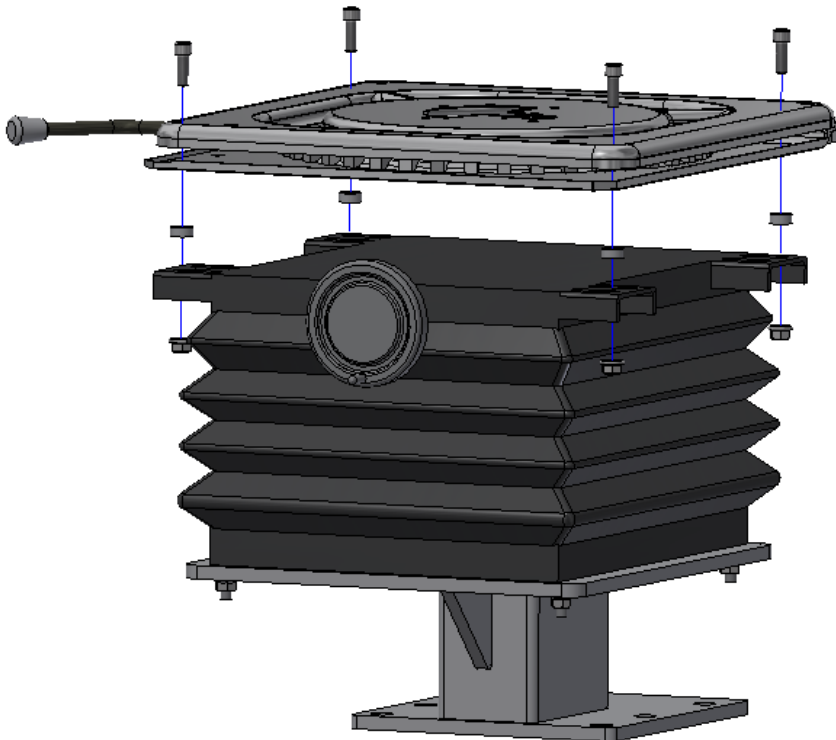
5. Flip over swivel and pop out the precut pop-outs on the top half of the swivel that are marked on the image below using a utility knife or similar.



Instructions for KM440 seat into a Case 580 Backhoe



6. Use the holes now accessible from the pop-outs to attached the swivel to the suspension using 5/16"-18x1" socket head cap screws, spacers and 5/16"-18 flange nuts. Use the front most and back most holes on the suspension flanges. The handle for the swivel should be on the front right corner of the suspension.
7. Tighten bolts up.



Instructions for KM440 seat into a Case 580 Backhoe



5/16"-18X1 1/4" FLAT HEAD
SOCKET CAP SCREWS

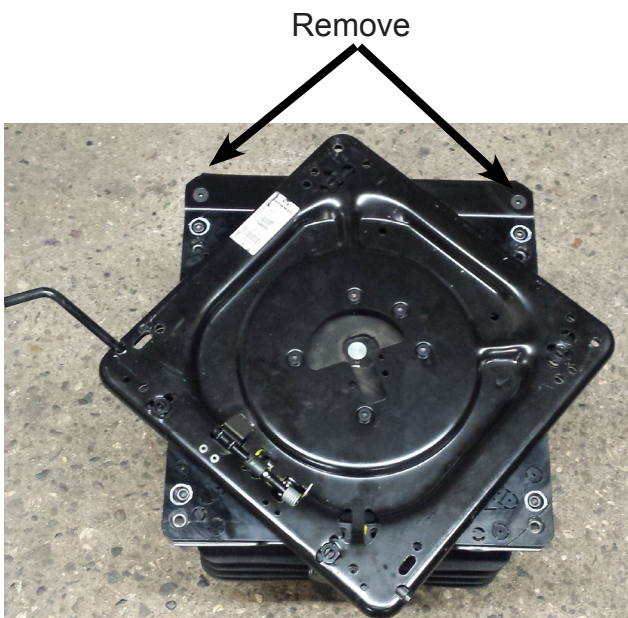


5/16" FLAT WASHERS

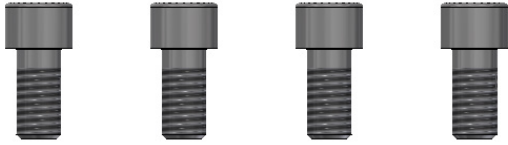


5/16"-18 FLANGE NUTS

8. Take the flat socket cap screws out of the rear side of the swivel.
9. Attach the upper half of the tether using the hole opened up with step 8 using a 5/16"-18x1 1/4" flat HD socket cap screw, 5/16" flat washer and a 5/16" flange nut.
10. Tighten all bolts and nuts fastening the tethers in place and the nuts fastening the suspension to the PED.



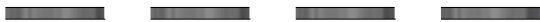
Instructions for KM440 seat into a Case 580 Backhoe



5/16"-18X1" SOCKET HEAD CAP SCREWS



5/16" FLAT WASHERS



OVERSIZED WASHER REMOVED IN STEP 2



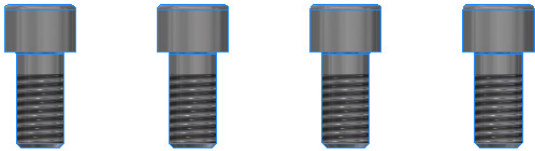
5/16"-18 FLANGE NUTS

11. Fasten the new Grammer slide rails to the bottom of the KM440 seat using 5/16"-18 X 1" socket head cap screws, 5/16" flat washers, the over sized washers from Step 2 and 5/16" flange nuts. Use the second from front and the back holes on the slide rail top to fasten to the seat bottom. **HAND TIGHTEN ONLY.**
12. Do not place a 5/16" flat washer on the bolt nearest the slide rail handle.

Note: 5/16"-18 flange nut and oversized washers from Step 2 are not shown in picture.



Instructions for KM440 seat into a Case 580 Backhoe



5/16"-18X5/8" SOCKET HEAD CAP SCREWS

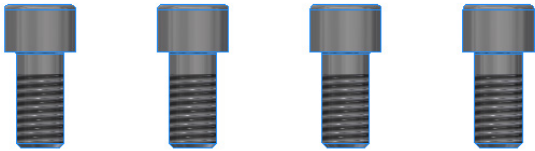


5/16"-18 FLANGE NUTS

13. Fasten the seat/slide rail assembly to the offset plates using 5/16"-18x5/8" socket head cap screws and 5/16" flange nuts. Use the side of the plate **WITH OUT** the notches and ensure the seat is offset forward on the plates.
14. Tighten the bolts.



Instructions for KM440 seat into a Case 580 Backhoe



5/16" - 18X5/8" SOCKET HEAD CAP SCREWS



5/16" - 18 FLANGE NUTS



15. Install the pedestal and swivel assembly into the backhoe. Use the bolts and/or nuts used to fasten the original seat to do this.
16. Tighten the bolts to secure pedestal.
17. Fasten the seat/slide rail/offset plate assembly using the popped out holes from Step 5 on the swivel. Fasten them using 5/16" - 18x5/8" socket head cap screw and flange nuts. Tighten bolts.
18. Once everything is in place slide the seat forward and back a few time until it slides smoothly. Once it is sliding smoothly tighten the bolts fastening the seat to the slide rails that were left only hand tight in Step 8.