

## Installation Guide

### Installation Instructions to Assembly John Deere Tractor & Mower Seat Cushion (PNs: 8555 & 8557)

1. Line up the holes in the back of the seat cushion (see Fig. 1) with the fingers pointing forward at the back edge of the steel pan (see Fig. 2).
2. Push the seat cushion onto the steel seat pan at an angle (see Fig. 3).
3. Once the seat cushion is pushed firmly onto the fingers at the back edge of the steel seat pan, lower the front edge of the seat cushion to the steel pan (while continuing to push the cushion towards the back of the seat pan).
4. Install the four (4) front screws (see Fig. 4).

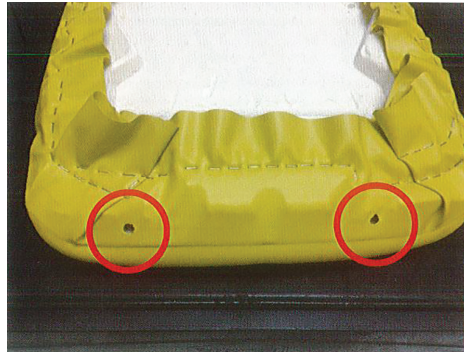


Figure 1

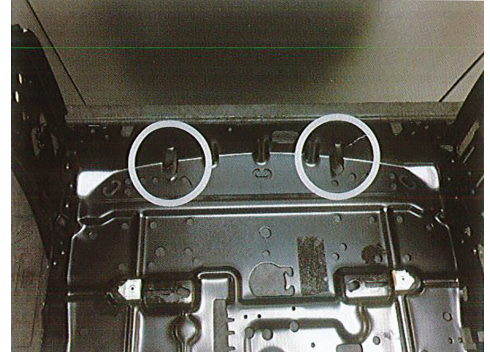


Figure 2

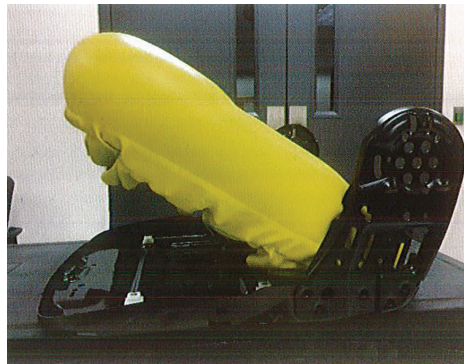


Figure 3

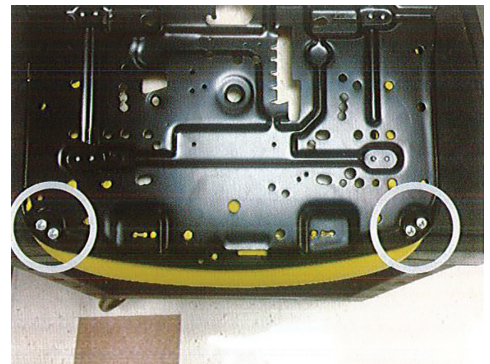


Figure 4

**NOTE:** These seat cushions have dense composite blocks built into them for attaching points. When installing screws, make sure the screws are going into the composite blocks and not just the seat cover and foam. It is recommended that you tighten the screws using a hand-held screwdriver and do not over tighten them, stripping out the threads.

## Installation Guide

### Installation Instructions to Assembly John Deere Tractor & Mower Backrest Cushion (PNs: 8556 & 8558)

1. Install two (2) seat back hole plugs (see Figure 5 & 6).
2. Line up the top of the seat cushion on the top of the steel seat pan. Make sure that the horizontal rib at the top of the seat cushion is between the hole plugs and the steel channel that is welded near the top of the steel seat pan.
3. Install a screw in each of the top two (2) corners of the steel seat pan to attach the seat cushion (see Figure 7).
4. Push the bottom edge of the seat cushion up inside the steel seat pan before installing the lower two (2) mounting screws (see Figure 8).
5. Install a screw in each of the bottom two (2) corners of the steel seat pan (see Figure 8 for proper hole locations to use).

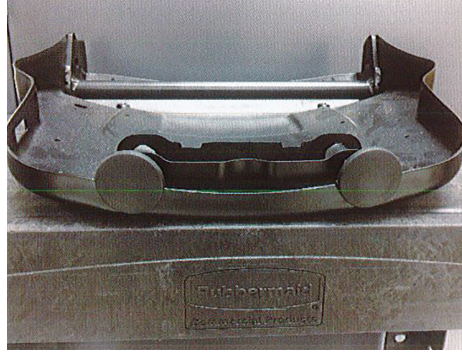


Figure 5



Figure 6



Figure 7

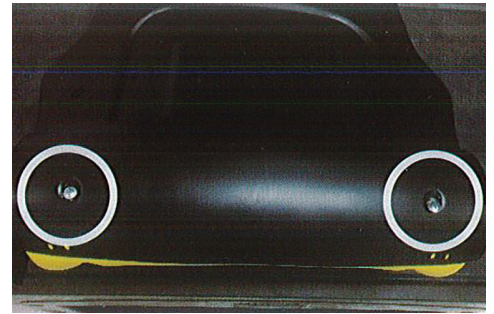


Figure 8