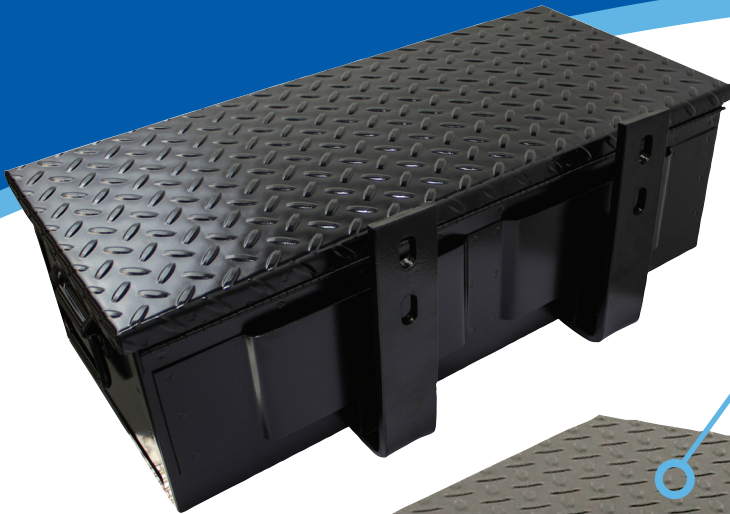


#30 Toolbox

with Mounting Brackets Kit



Black Steel
PN: 1520

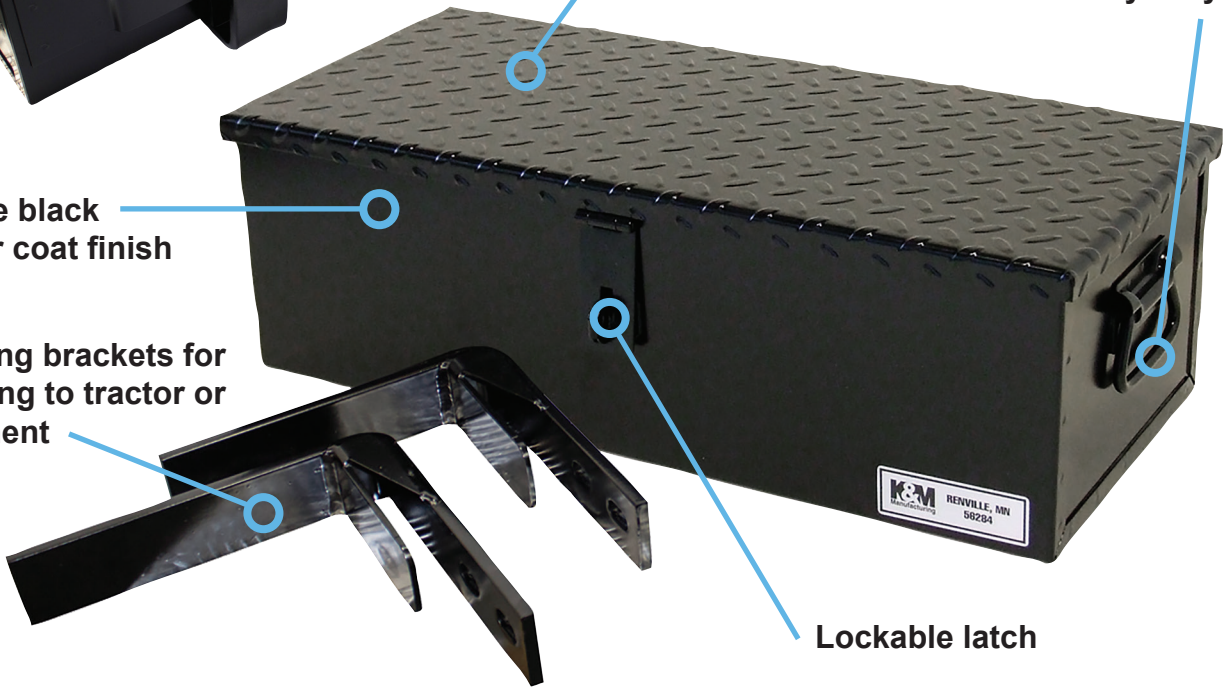


Heavy-duty all-steel construction for rugged applications

Heavy-duty handles

Durable black powder coat finish

Mounting brackets for mounting to tractor or implement



Lockable latch

APPLICATIONS



Construction



Semis



Tractors

- Universal toolbox fits most tractors
- Mounting brackets can be placed from 4" to 14"
- 23" x 10" x 7" (W x D x H)
- Approximately 25 lbs
- Toolbox easily removes from brackets if needed



TRACTORSEATS.com CONSTRUCTIONSEATS.com

800-328-1752

308 NW 2nd Street • Renville, MN 56284

