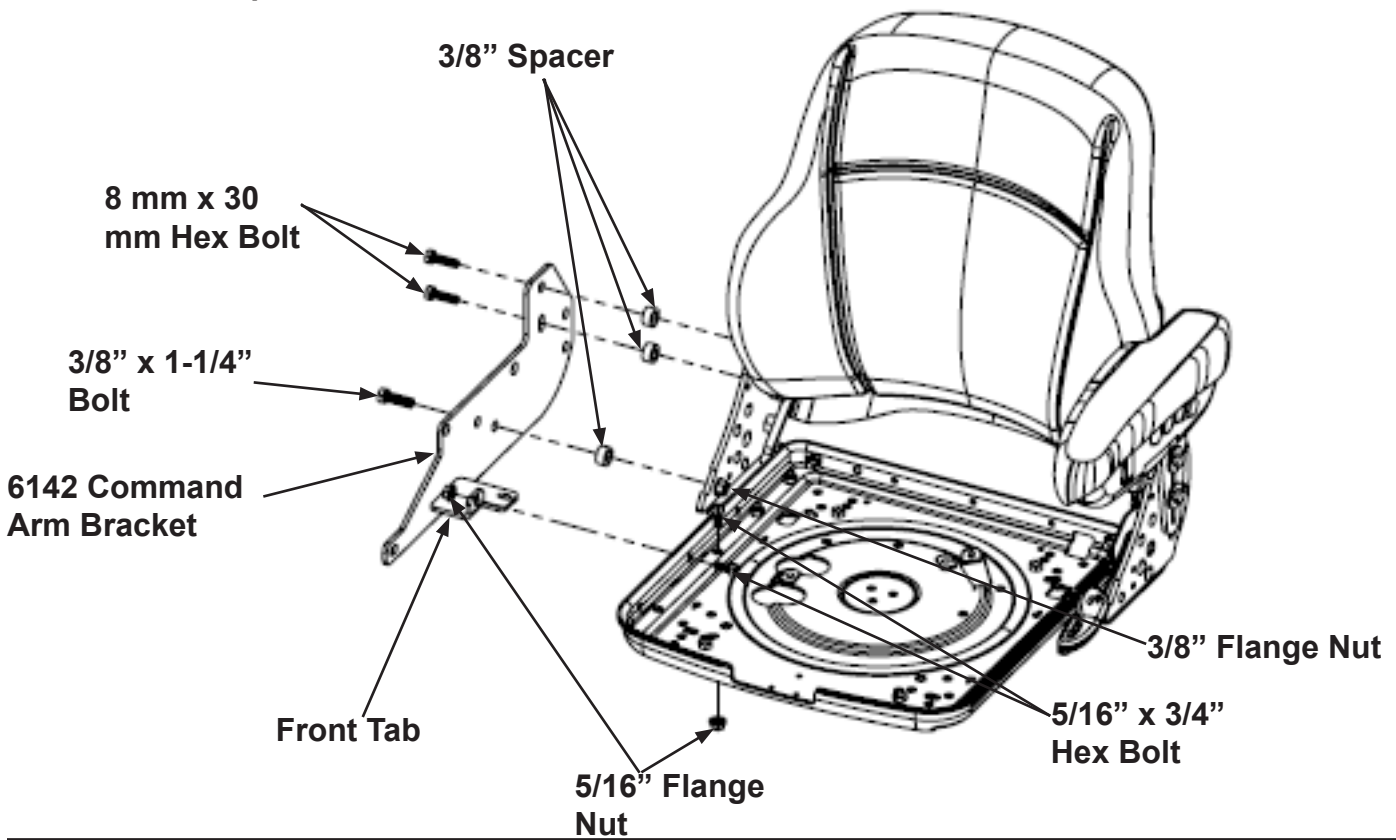
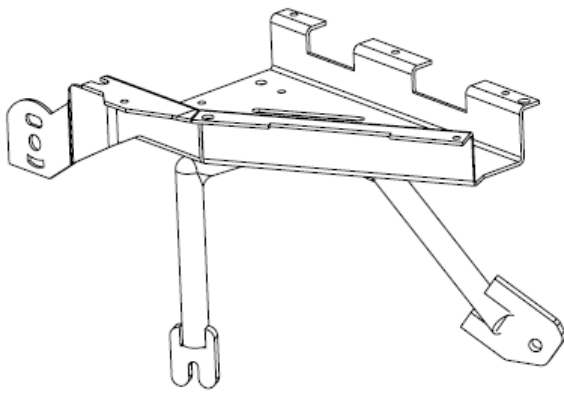


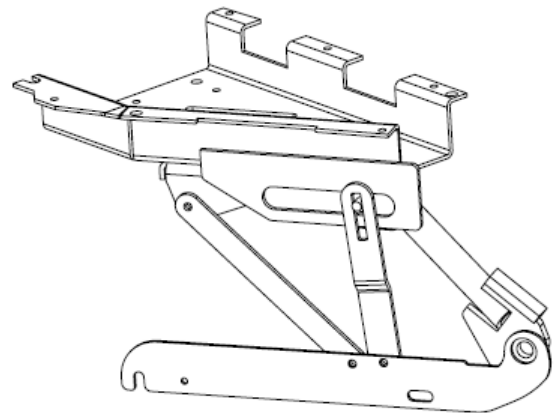
1. Remove the original seat. Keep the nuts used to mount the original seat to the OEM seat plate.
2. Remove the right hand arm rest and both seat belt components from the new seat.
3. If desired, re-install the seat belt components with the retractable belt on the right side and the latch on the left side. Run the bolt from the outside in.
4. Remove the seat cushion by taking out the two phillips screws from the lower front corners of the seat pan. Then lift the seat cushion off.
5. Mount the command arm bracket 6142 to the seat top by first fastening the front tab of the 6142 command arm bracket to the seat pan using two 5/16" x 3/4" bolts and flange nuts.
6. Determine which style OEM command arm mount bracket you have. See page 2 for clarification. If you have an A, B, or C style command arm mount, fasten the rear of the 6142 command arm bracket to the seat frame using two 8 mm x 30 mm bolts and 3/8" spacers. You will use the holes that the armrest bolts threaded into. Fasten the middle of the command arm bracket to the seat frame using one 3/8" x 1 1/4" bolt, 3/8" spacer, and flange nut. If you have a D style command arm mount, the rest of the mounting will be done when you install the OEM command arm.
7. Place the seat into the cab onto the OEM seat plate and fasten down using the nuts removed in step 1.



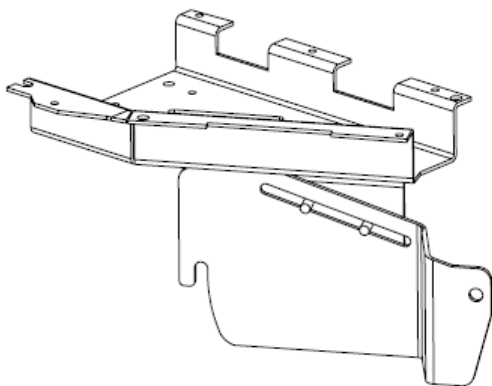
1. Check the command arm mount mount in your cab and verify which style you have. See below for the four different options. NOTE: The plastic housing is not shown for clarity.
2. Use the corresponding hardware in the following pages to assemble the OEM command arm to the 6142 command arm bracket.
3. For Command Arm Mount Style A or B go to page 3. For Command Arm Mount Style C go to page 4. For Command Arm Mount Style D go to page 5.



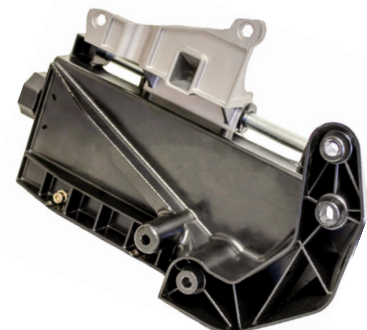
Command Arm Bracket A



Command Arm Bracket B



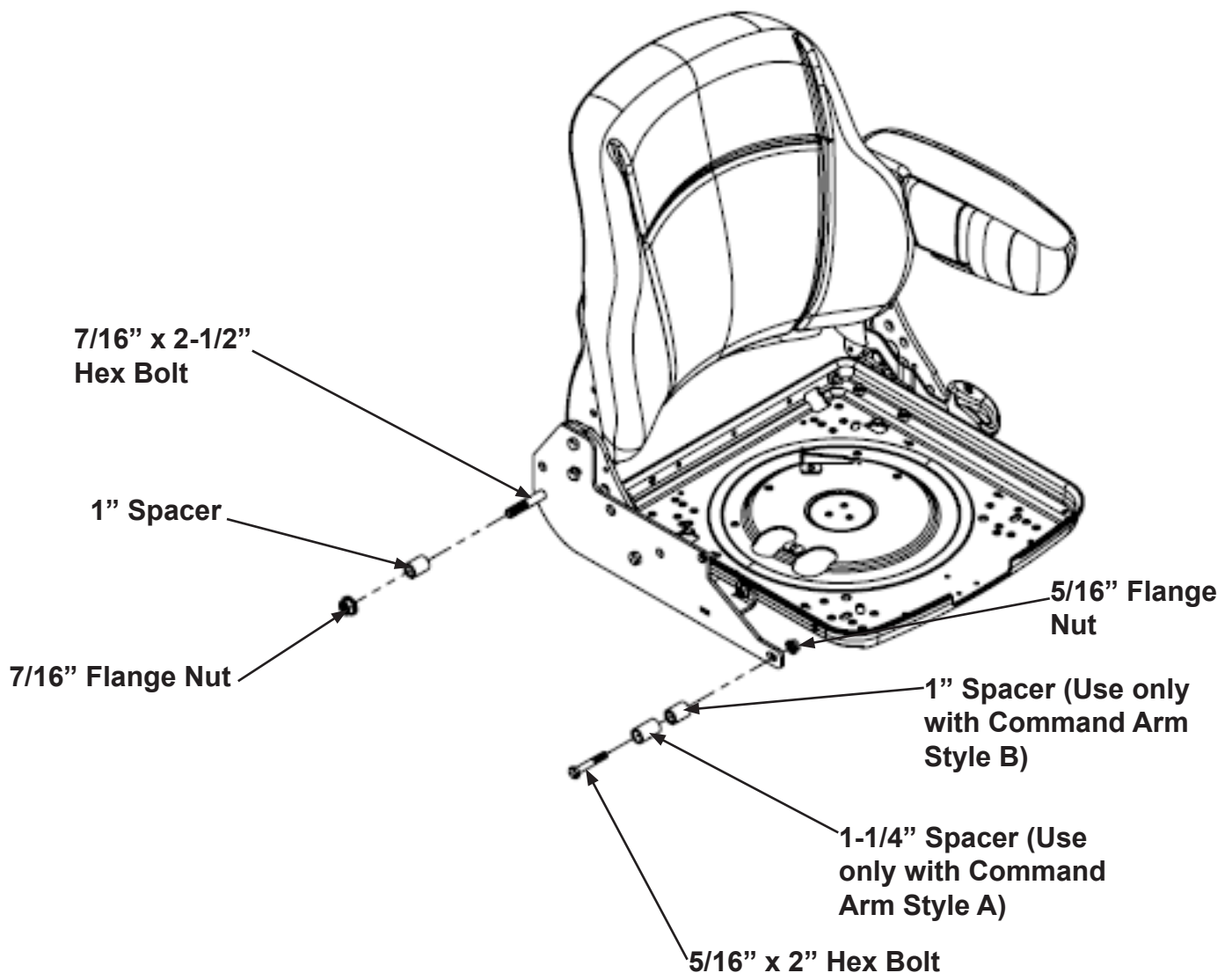
Command Arm Bracket C



Command Arm Bracket D

For Command Arm Mounts A&B

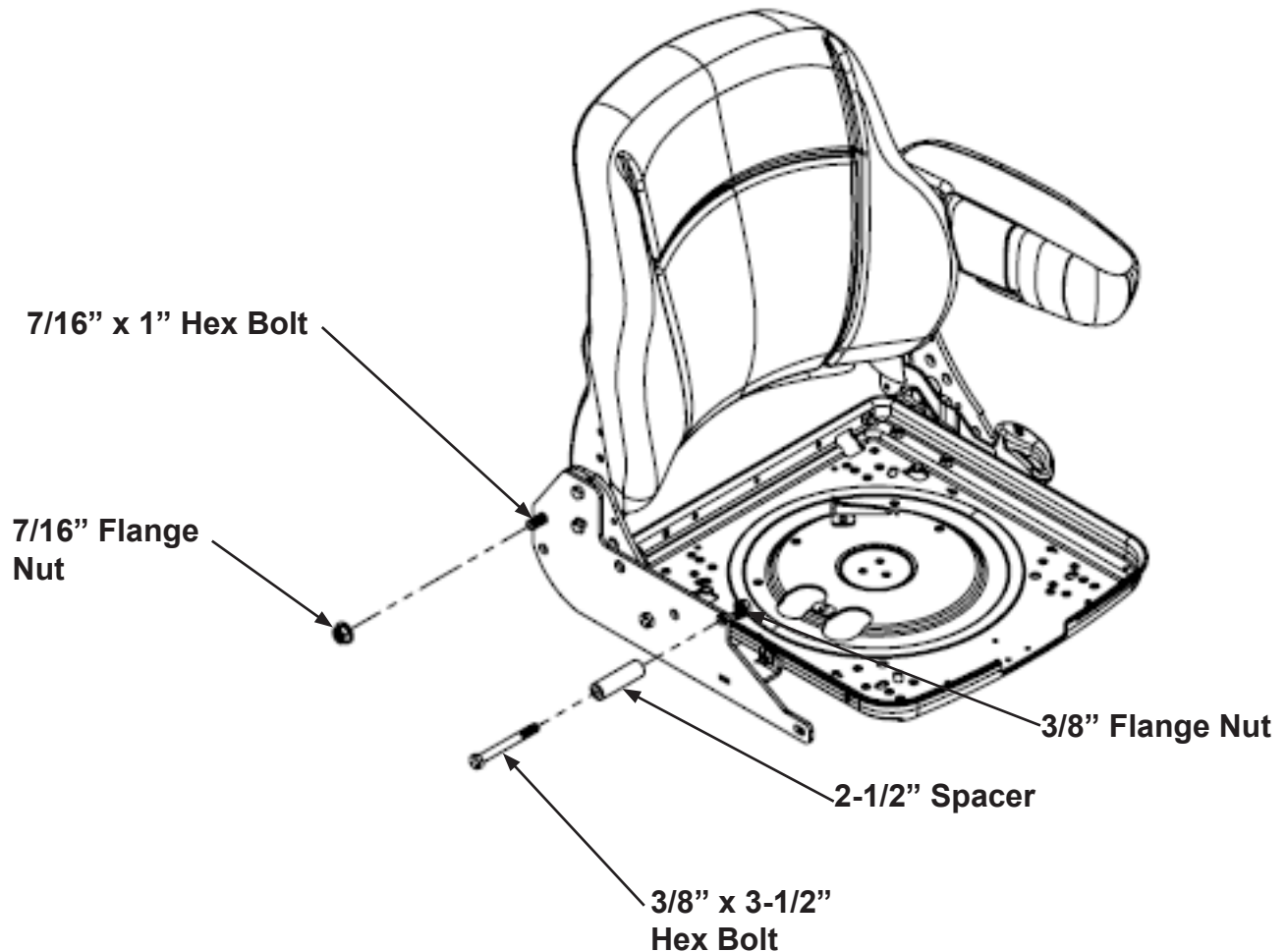
1. Mount the command arm mount A or B to the 6142 command arm bracket using a 7/16" x 2-1/2" bolt, 1" spacer, and flange nut in the rear hole. The OEM command arm mount sits on the outside of the spacer.
2. Use a 5/16" x 2" bolt, spacer, and flange nut to mount the front. A 1-1/4" spacer is used in the front for the A style command arm mount and a 1" spacer is used in the front if you have the B style command arm mount. The OEM command arm mount sits on the outside of the spacer.
3. Continue to page 6.



### CIH MX, Magnum, Steiger, STX 1300 Uni Pro Installation

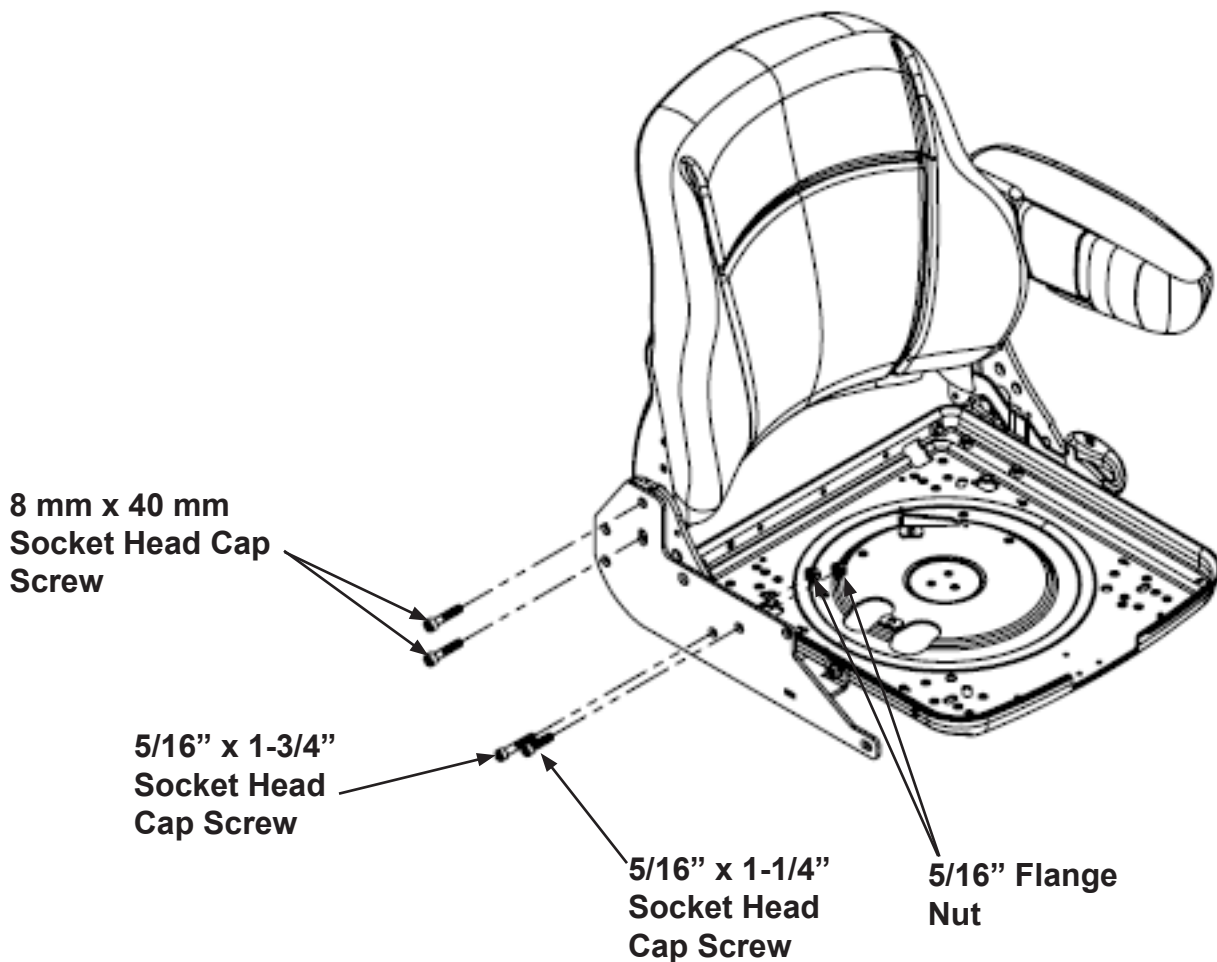
For Command Arm Mount C

1. Mount the command arm mount C to the 6142 command arm bracket using a 7/16" x 1" bolt and flange nut in the rear hole.
2. Use a 3/8" x 3-1/2" bolt, 2-1/2" spacer, and flange nut to mount the front. The OEM command arm mount sits on the outside of the spacer.
3. Continue to page 6.



#### For Command Arm Mount D

1. Mount the command arm mount D to the 6142 command arm bracket using two 8 mm x 40 mm socket head cap screws and 3/8" spacers in the holes where the armrest mounted. The spacers go in between the 6142 command arm bracket and the seat.
2. Use a 5/16" x 1-3/4" socket head cap screw, 3/8" spacer, and flange nut in the lower front hole. The spacer goes in between the 6142 command arm bracket and the seat.
3. Use a 5/16" x 1-1/4" socket head cap screw and flange nut in the furthest front hole.
4. Continue to page 6.





## Installation Guide 6808

### CIH MX, Magnum, Steiger, STX 1300 Uni Pro Installation

---

1. Re-install the seat cushion by sliding it back onto the pan and fastening down with the screws removed. Be sure the operator presence switch gets threaded through the rear of the seat pan.
2. Connect the wiring from the seat to the tractor.