

# KM Multi-Function

## LED Warning Light Bars



### CHOOSE FROM

KM LED 9.5"  
Multi-Function  
Amber Warning  
Light Bar  
**PN: 2962**

OR

KM LED 14"  
Multi-Function  
Amber Warning  
Light Bar  
**PN: 2995**

OR

KM LED 34"  
Multi-Function  
Amber Warning  
Light Bar  
**PN: 2604**

OR

KM LED 46"  
Multi-Function  
Amber Warning  
Light Bar  
**PN: 2605**

**LED 9.5"**  
**Multi-Function Amber  
Warning Light Bar**  
**PN: 2962**  
TL1100



**RETAIL \$179**

- Amber flashing warning light
- 9.5" x 1.75" x 6.75" (W x H x D)
- Powerful magnetic base or solid mount
- Includes: cigarette light adapter, wiring and switch

**LED 14"**  
**Multi-Function Amber  
Warning Light Bar**  
**PN: 2995**  
TL1200



**RETAIL \$200**

- Amber flashing warning light
- 14" x 1.75" x 6.75" (W x H x D)
- Powerful magnetic base or solid mount
- Includes: two wiring adapters: cigarette light adapter and hard wiring adapter with switch
- Both adapters have an on/off switch and flash pattern switch



**Powerful magnetic  
base or solid mount**

- 360° flashing with multiple flash patterns
- Polycarbonate lens
- Input voltage: 12-Volt to 24-Volt
- Ideal for Agriculture, Construction and Work Vehicles
- Manufacturer's Limited 1 Year Warranty

See **REVERSE**  
for 34" & 46"  
Light Bars.

TRACTORS<sub>SEATS</sub>.com CONSTRUCTION<sub>SEATS</sub>.com TURFS<sub>SEATS</sub>.com

**800-328-1752**

308 NW 2nd Street • Renville, MN 56284

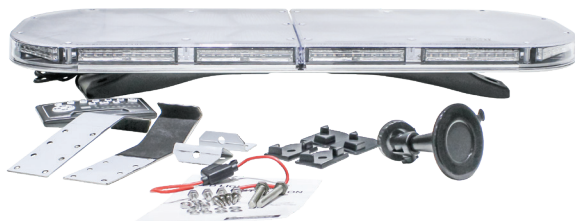


**LED 34"  
Multi-Function Amber  
Warning Light Bar  
PN: 2604  
TL1400**



**RETAIL \$495**

- Amber flashing warning light
- 34.25" x 3.75" x 11.75" (W x H x D)
- Includes: controller, wiring harness and mounting brackets

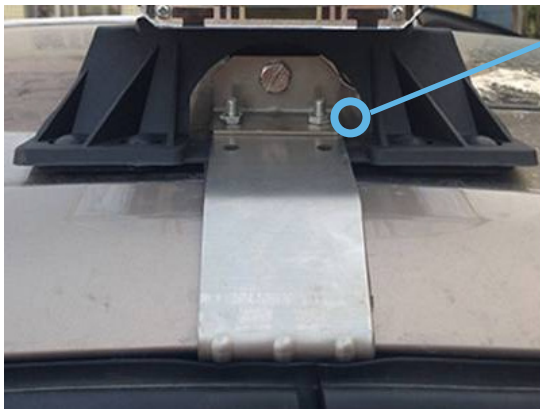
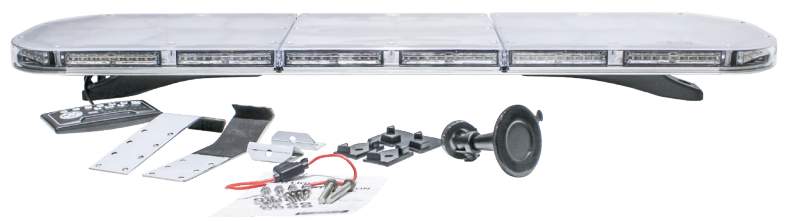


**LED 46"  
Multi-Function Amber  
Warning Light Bar  
PN: 2605  
TL1500**



**RETAIL \$627**

- Amber flashing warning light
- 46" x 3.75" x 11.75" (W x H x D)
- Includes: controller, wiring harness and mounting brackets



**Mounting brackets and hardware** are provided for easy installation

- 360° flashing with 17 flash patterns
- 1.5" thick with low profile design
- Polycarbonate lens
- Bright 3 watt LED bulbs
- Input voltage: 12-Volt to 24-Volt
- Ideal for Agriculture, Construction and Work Vehicles
- Manufacturer's Limited 1 Year Warranty