



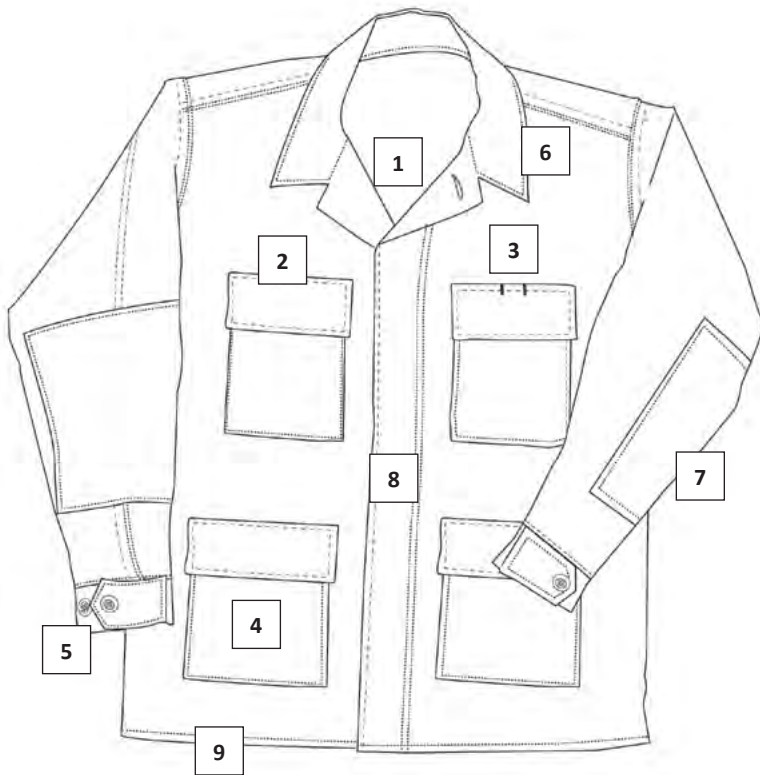
For the **Tru** Professional

TRU-SPEC® Battle-Dress-Uniform (BDU) Coat Detail Specification

TRU-SPEC® is a registered trademark of ATLANCO, Inc.
Detailed spec sheets are available upon request.
Please contact your salesperson for details.

GENERAL DESIGN & DESCRIPTION

The BDU coat design is taken from the original BDU government specification (MIL-C-44048G) for comfortably fit and active wear use. The BDU coat features four bellowed pockets with concealed snag-proof button flaps. The left breast pocket flap has a pen or pencil slot. The garment has a wing-tip collar style, sleeves with three-button tab closure cuffs and reinforced elbow patches. All stress points are bar-tacked for reinforcement.



1. Button up collar.
2. Chest pockets have snag proof button flaps with bellows and drain holes.
3. Pencil pocket openings.
4. Lower pockets are partially bellowed with snag proof button flaps and drain holes.
5. Adjustable 2" wide 3-button cuffs.
6. Fused flaps and collar.
7. Reinforced elbow patches.
8. Concealed snag proof 5-button placket.
9. Hemmed waist to be worn outside the trousers.

COLORS/FABRICS

65/35 Polyester Cotton Rip-Stop

1301	Grey	1306	Charcoal
1310	Khaki	1316	Olive Drab
1320	Black	1331	Navy
1910	Tac Tiger™		

50/50 CORDURA® Nylon Cotton Rip-Stop

1220	MultiCam®	1270	Woodland
1279	Desert 3-Color		

100% Cotton Rip-Stop

1514	Woodland	1532	Black
1550	Khaki	1568	Olive Drab
1586	Navy	1897	Desert 3-Color
1590	Original Vietnam Tiger Stripe™		
1596	Original Desert Tiger Stripe™		

60/40 Cotton Polyester Twill

1619	Vietnam Tiger Stripe
1637	City Urban
1728	Black
1741	Olive Drab
1754	Navy
1822	Woodland

Sizes: XSmall-5XLarge Regular
XSmall-3XLarge Long & Small-XLarge Short

Fabric CO: United States (US)

Manufacture CO: Honduras (HN)

