



TRU-SPEC® 24-7 Series™ WeatherShield™ 3-in-1 Jacket

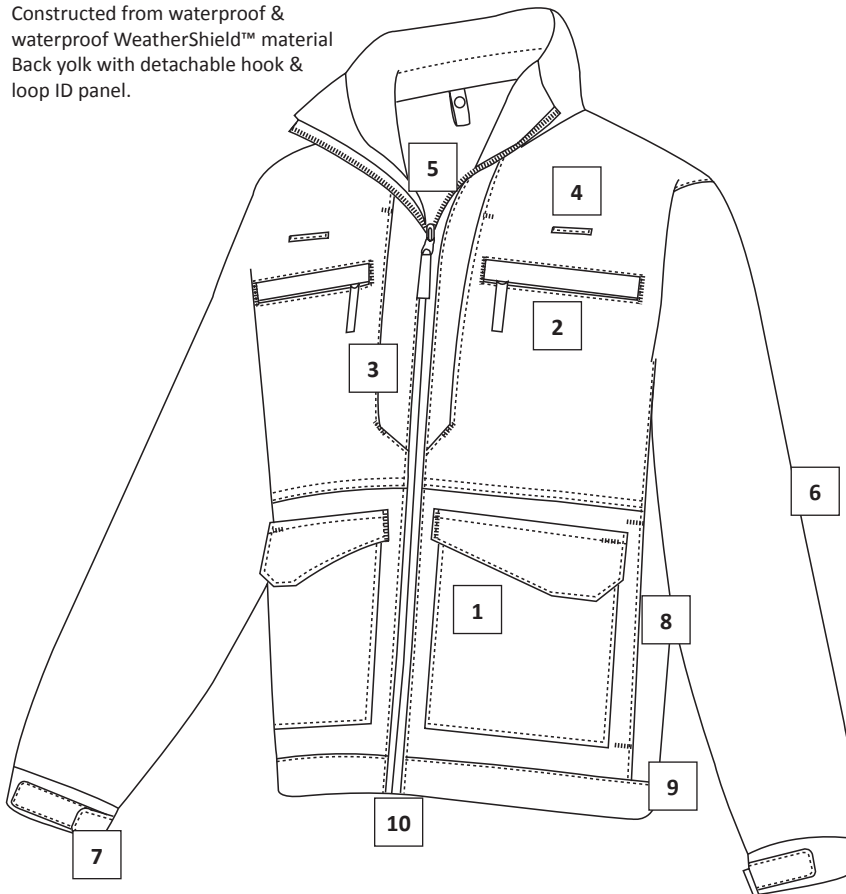
Detail Specification

TRU-SPEC® is a registered trademark of ATLANCO, Inc.
Detailed spec sheets are available upon request.
Please contact your salesperson for details.

GENERAL DESIGN & DESCRIPTION

The waterproof and windproof TRU-SPEC® 24-7 Series™ WeatherShield™ 3-in-1 jacket features two signature 24-7 Series™ bellowed and flapped large patch pockets in the front at waist level with hook and loop closures. Front shall have two hidden zipper side welt pockets. It has two chest document pockets with hidden zipper closures as well as upper chest hidden zipper welt pockets. Both upper chest pockets shall have an inside detachable ID panel. Upper shoulders shall have covered tab opening for accessing mic or hydration hoses. There shall be an inside pencil pocket at the left front facing. The back shall have a cape opening with hook and loop closure with a detachable ID panel. It has a front zipper closure with a stand up zip through collar. It has articulated sleeves with cuffs with elastic and hook and loop closures. Hemmed waist has elastic in the back and side zippers to access belt or trouser pockets. All pocket zippers shall have nylon pull tabs. The jacket also has a removable microfleece liner that can be worn as a separate jacket (*see microfleece liner for specs*).

- Constructed from waterproof & waterproof WeatherShield™ material
- Back yolk with detachable hook & loop ID panel.



1. 2-signature 24-7 Series™ bellowed and flapped patch pockets with hook & loop closures.
2. 2-hidden zipper chest pockets containing ID tabs that detaches with hook & loop.
3. 2-vertical upper chest document pockets with hidden zipper closures.
4. Covered mic or hydration access openings on upper chest.
5. Zipper front closure with stand-up zip through collar.
6. Articulated sleeves.
7. Cuffs are elasticized with hook & loop adjustment tabs.
8. 2-zippered side welt pockets with hidden zipper.
9. Side zippers with snap tab to allow access to duty belt or trouser pockets.
10. Elastic waist with snap tabs.

COLORS/FABRICS

WeatherShield™ Waterproof

2480 – Black

2481 – Navy

* All colors include a black fleece liner

Sizes:

XSmall-5XLarge Regular
Medium-2XLarge Long

Fabric CO:

Indonesia (ID)

Manufacture CO:

Indonesia (ID)

