



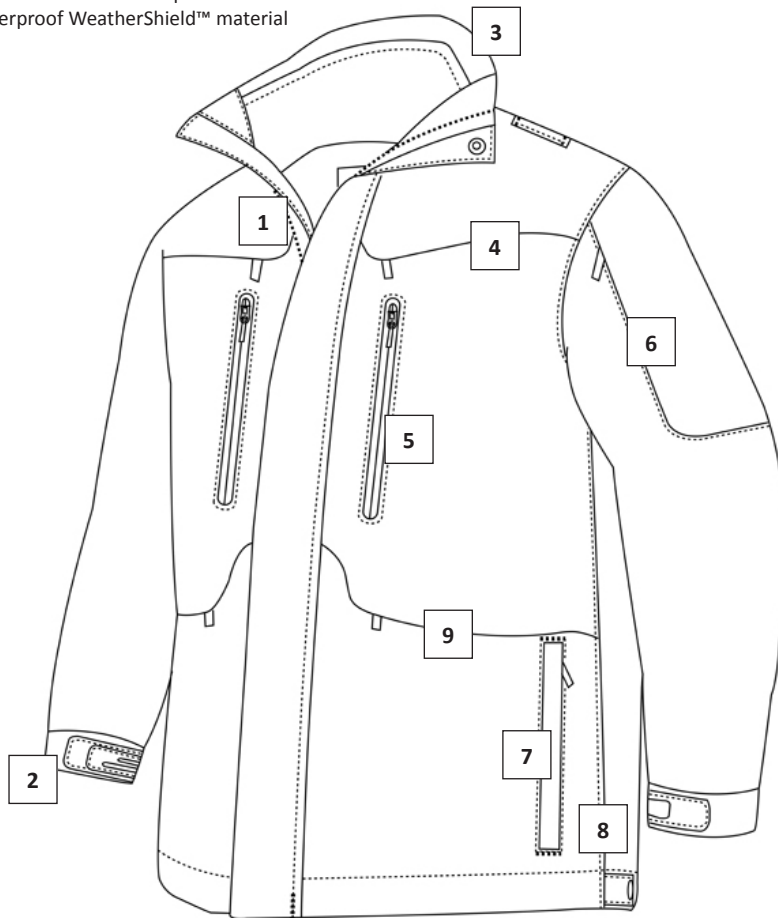
TRU-SPEC® 24-7 Series® WeatherShield™ 3-in-1 Parka Detail Specification

TRU-SPEC® is a registered trademark of ATLANCO, Inc.
Detailed spec sheets are available upon request.
Please contact your salesperson for details.

GENERAL DESIGN & DESCRIPTION

The TRU-SPEC® 24-7 WeatherShield™ 3-in-1 Parka features two welded flap large pockets in the front at waist level with zipper closures. The front shall have two hidden zipper side welt pockets. It has two vertical upper chest document pockets with waterproof zipper closures. Front also has horizontal upper chest pockets with zipper closures and welded flaps. Upper chest pockets shall have an inside detachable ID panel. Upper shoulders shall have loops for securing mic or hydration hoses. The back shall have a cape opening with hook and loop closure with a detachable ID panel. It has a front zipper closure with a stand up zip through collar. Collar has a roll up zip off stowable hood. Front closure has an inner and outer stormflap with snap fasteners on the outer flap and front to cover zipper. Sleeves have upper pockets with covered zipper closures. It has cuffs with elastic and hook and loop closures. Hemmed waist has side zippers and snap tabs at sideseam. The jacket also has a removable fleece liner that can be worn as a separate jacket. The shell fabric shall be 100% Nylon with clear breathable coating.

- Constructed from waterproof & waterproof WeatherShield™ material



1. Zippered front closure with stand up zip through collar with storm flap with snap closure.
2. Elastic cuff with flexible and adjustable hook & loop closure.
3. Zip off rollable and stowable hood secured with snap closure.
4. Horizontal chest pockets with zipper closure, welded flaps and hook & loop attached detachable ID flap.
5. Vertical upper chest document pockets with waterproof zippers.
6. Large upper sleeve pockets with hidden zipper.
7. Hidden zipper side welt pockets.
8. Both jacket and fleece liner have two way side zippers extending from under arm through the bottom seam with snap safety closure for added ventilation or to access equipment.
9. Horizontal waist pockets with zipper closure covered by welded flap.

COLORS/FABRICS

WeatherShield™ Waterproof

2490 – Black

2491 – Midnight Navy

* All colors include a black fleece liner

Sizes:

XSmall-5XLarge Regular
Medium-2XLarge Long

Fabric CO:

Indonesia (ID)

Manufacture CO:

Indonesia (ID)

