



# TRU-SPEC® TRU Xtreme™ Combat Shirt

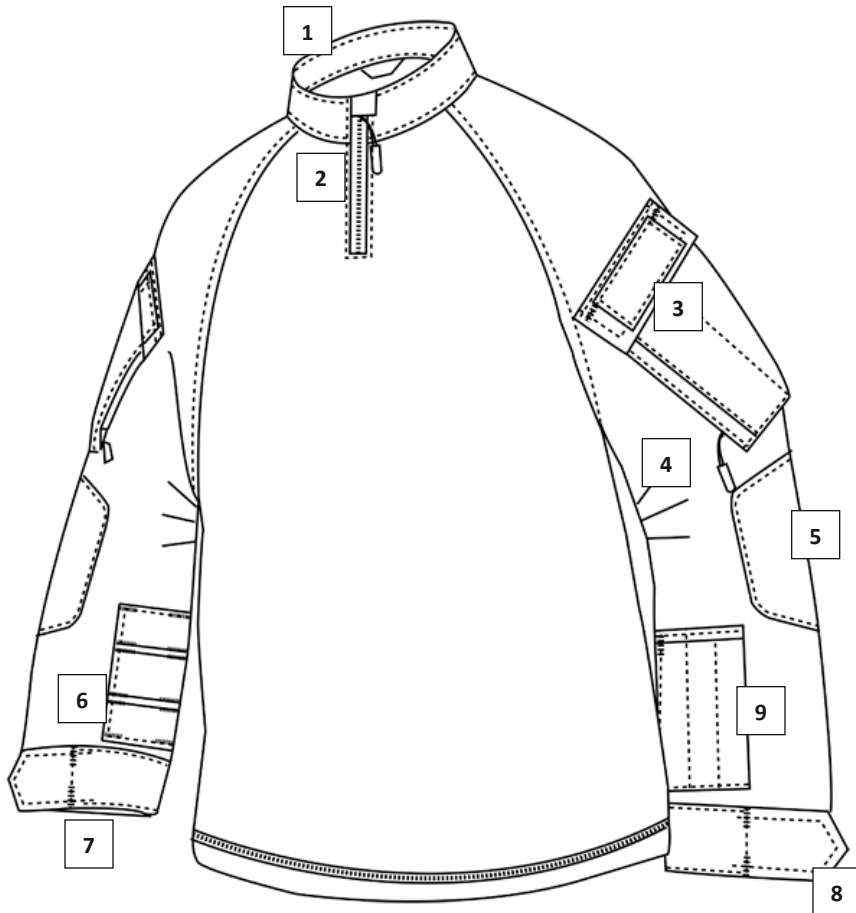
## Detail Specification

TRU-SPEC® is a registered trademark of ATLANCO, Inc.  
Detailed spec sheets are available upon request.  
Please contact your salesperson for details.

### GENERAL DESIGN & DESCRIPTION

The TRU XTreme™ Combat Shirt is a stand-alone shirt intended to greatly increase user comfort through the use of lightweight, moisture-wicking, and breathable fabrics. The shirt's torso is constructed of highly breathable no melt no drip CORDURA® Baselayer\* fabric, a 60/40 cotton nylon blend with advanced moisture management capabilities that also reduces the severity of burn injuries. The fabric wicks moisture away from the skin and dries rapidly, preventing the fabric from sticking to the user's skin and greatly increasing comfort. The sleeves and upper back panels of the shirt are constructed of a lightweight, but durable and abrasion-resistant 50/50 Nylon /Cotton fabric designed to provide extra protection. Each sleeve has a Superfabric® external elbow pockets. No-seam shoulders minimize rubbing or chafing. Other features include loop faced shoulder pockets with hook and loop closure and hidden zipper pockets on the upper arm and a detachable tri pocket accessory with document window and pen slots.

\*For more information on CORDURA® Baselayer fabrics visit [www.defendyourbase.com](http://www.defendyourbase.com)



1. Mandarin collar with CORDURA® Baselayer interior for added comfort.
2. Zipper front closure with zipper hood for comfort.
3. Loop faced shoulder pockets for patches, with hook & loop closure and hidden zipper pocket accessible from the front by pull tab zippers.
4. Articulated elbows.
5. SuperFabric® elbow patches for added abrasion resistance.
6. Tunnel system on sleeves for alternating tri-pocket from left to right hand use.
7. Angled cuff for added wrist/hand protection.
8. Adjustable hook & loop cuff closure.
9. Removeable tri-pocket accessory with document window and 3 interior pen/pencil slots.

### COLORS/FABRICS

**50/50 Nylon Cotton Rip-Stop**  
(Fabric refers to sleeve fabric only)

- 2580 Olive Drab
- 2581 Black
- 2582 Khaki
- 2583 Navy
- 2535 MultiCam®
- 2586 Woodland Digital
- 2587 Urban Digital

**Sizes:** XSmall-3XLarge Regular  
Medium-2XLarge Long  
**Fabric CO:** United States (US)  
**Manufacture CO:** Honduras (HN)

