

TRU-SPEC® Tactical Response Combat Shirt

Detail Specification

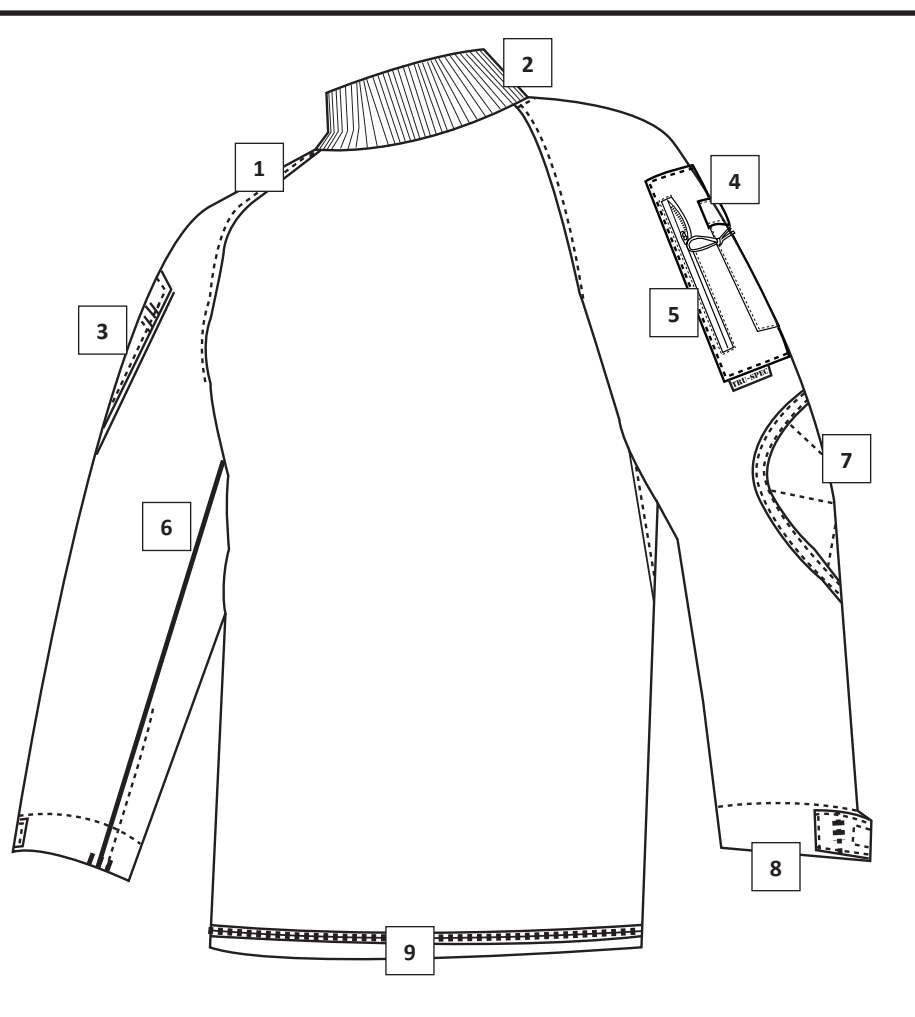


TRU-SPEC® is a registered trademark of ATLANCO, Inc.
Detailed spec sheets are available upon request.
Please contact your salesperson for details.

GENERAL DESIGN & DESCRIPTION

The TRU-SPEC® Combat Shirt is a stand-alone shirt intended to greatly increase user comfort through the use of lightweight, moisture-wicking, and breathable fabrics. The shirt's torso is constructed of highly breathable no melt no drip CORDURA® Baselayer fabric*, a 60/40 cotton nylon blend with advanced moisture management capabilities that also reduces the severity of burn injuries. The fabric wicks moisture away from the skin and dries rapidly, preventing the fabric from sticking to the user's skin and greatly increasing comfort. The sleeves and upper back panels of the shirt are constructed of a lightweight, but durable and abrasion-resistant 50/50 Nylon/Cotton or 65/35 Polyester/Cotton Rip-stop fabric designed to provide extra protection. Each sleeve has an anti abrasion padded elbow patch for added comfort. No-seam shoulders minimize rubbing or chafing. Other features include zippered storage pockets on the upper arm, and a place to attach name, rank, and flag on the upper arm.

*For more information on CORDURA® Baselayer fabrics visit www.defendyourbase.com



1. Off-set seam to minimize rubbing and chafing.
2. Mock turtleneck collar.
3. Loop sleeve pockets for attaching name, rank and unit patches.
4. Glint tape holder for IR tape.
5. Zippered sleeve storage pockets.
6. Gusseted sleeves.
7. Anit-abrasion padded elbow patches.
8. Hook & loop cuff closures.
9. Cover stitch hem.

COLORS/FABRICS

50/50 Nylon Cotton Rip-Stop

(Fabric refers to sleeve fabric only)

- 2550 Multicam®/Sand
- 2551 Army Digital/Foliage
- 2560 Woodland/Olive Drab
- 2561 Desert 3-Color/Sand

65/35 Polyester Cotton Rip-Stop

(Fabric refers to sleeve fabric only)

- 2552 Black/Black
- 2553 Olive Drab/Olive Drab
- 2554 Khaki/Sand
- 2555 Navy/Navy
- 2557 Desert Digital/Sand
- 2558 Urban Digital/Black
- 2559 Woodland Digital/Olive Drab



Sizes: XSmall-3XLarge Regular
Medium-2XLarge Long

Fabric CO: United States (US)

Manufacture CO: Honduras (HN)

